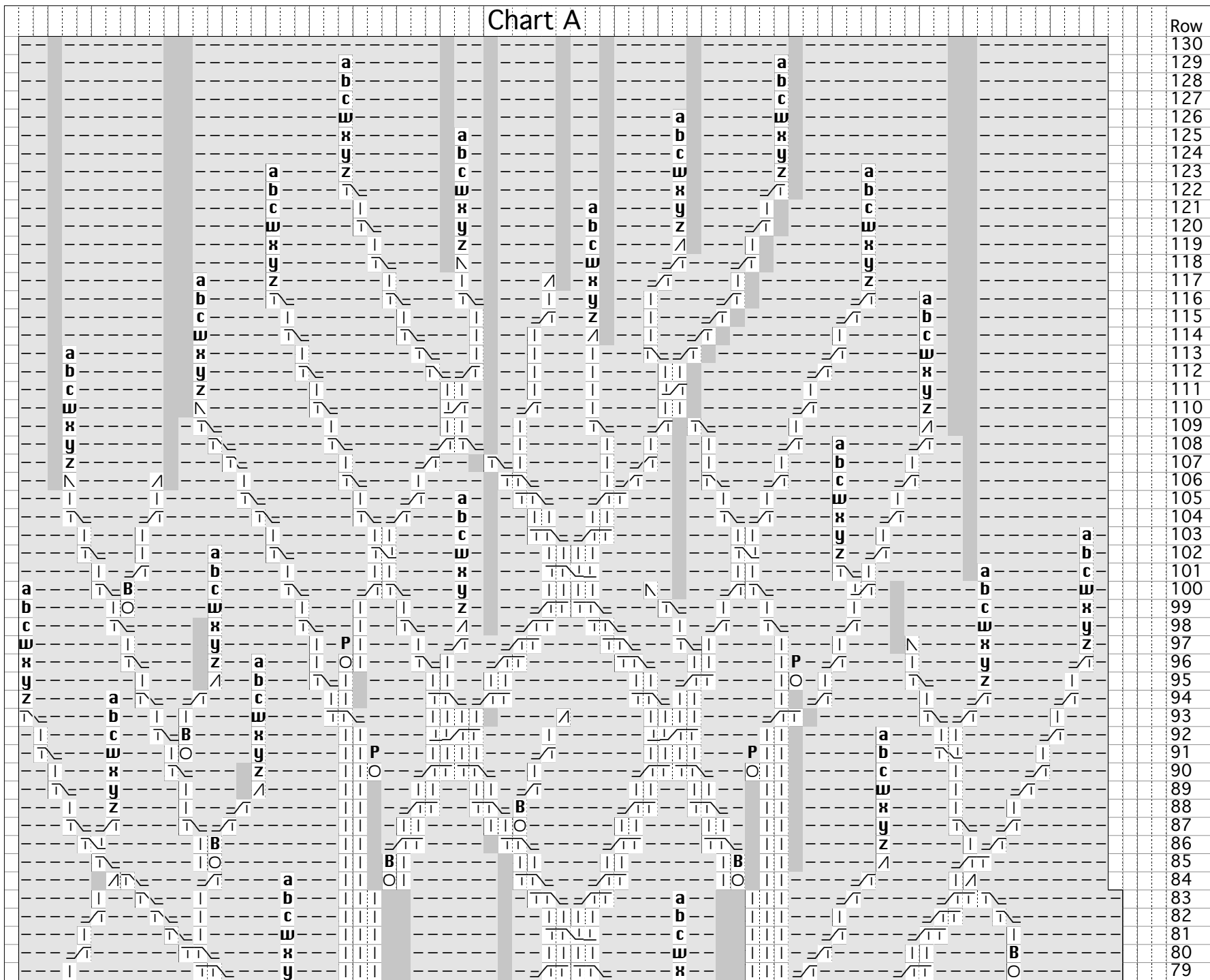


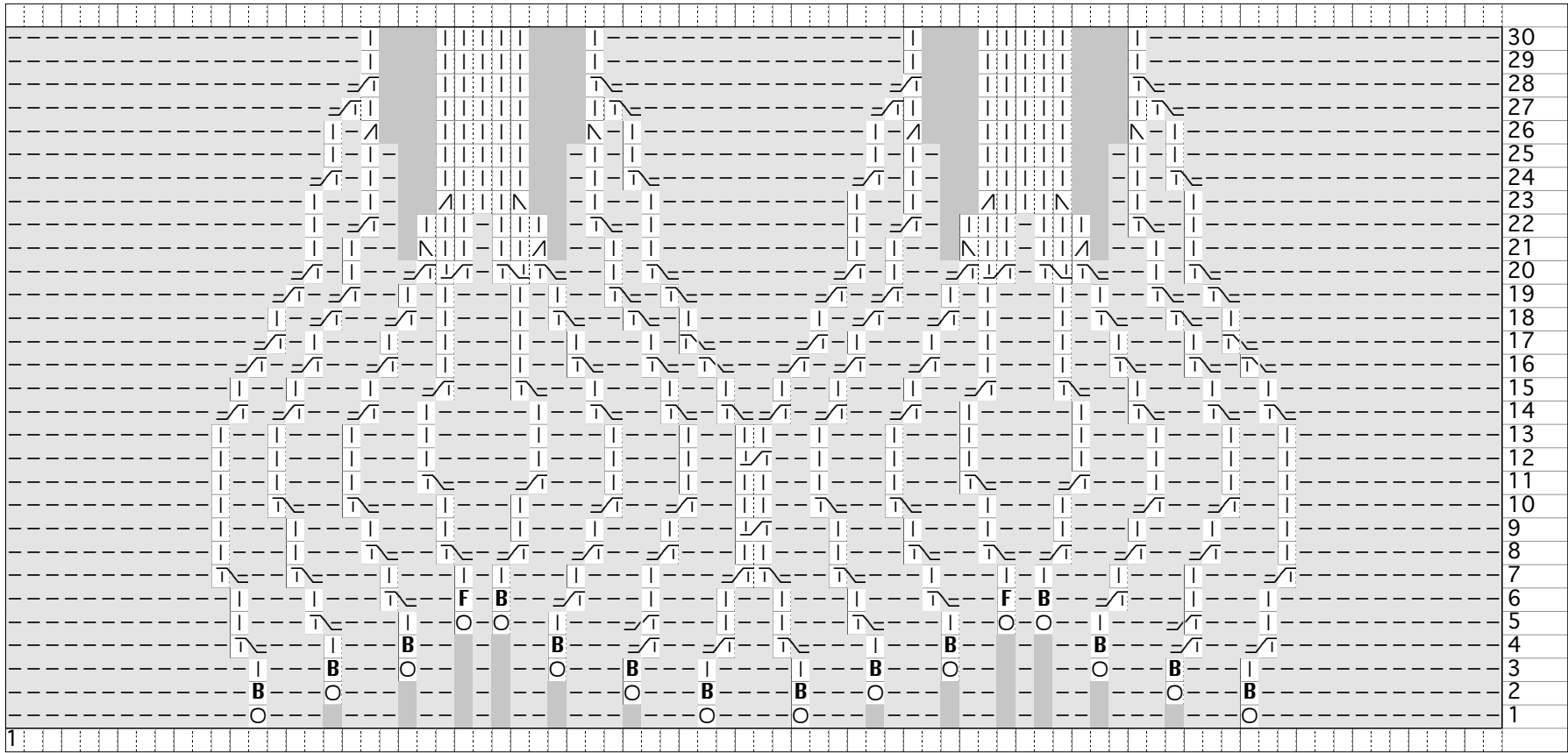
Chart A



Row
130
129
128
127
126
125
124
123
122
121
120
119
118
117
116
115
114
113
112
111
110
109
108
107
106
105
104
103
102
101
100
99
98
97
96
95
94
93
92
91
90
89
88
87
86
85
84
83
82
81
80
79

The diagram consists of a 48x48 grid. Two thick grey vertical bars are positioned at columns 18 and 32. The grid is filled with dashed lines forming a pattern. In the left section (columns 1-17), a large 'B' shape is formed by dashed lines, with small 'B' and 'O' characters placed at various points. In the middle section (columns 19-31), a vertical column of letters 'a' through 'z' is centered, with 'F' and 'B' at the bottom. In the right section (columns 33-47), another large 'B' shape is formed by dashed lines, with small 'B' and 'O' characters placed at various points. On the far right, a vertical column of numbers is listed from 78 at the top to 31 at the bottom.

78
77
76
75
74
73
72
71
70
69
68
67
66
65
64
63
62
61
60
59
58
57
56
55
54
53
52
51
50
49
48
47
46
45
44
43
42
41
40
39
38
37
36
35
34
33
32
31



30
29
28
27
26
25
24
23
22
21
20
19
18
17
16
15
14
13
12
11
10
9
8
7
6
5
4
3
2
1

1