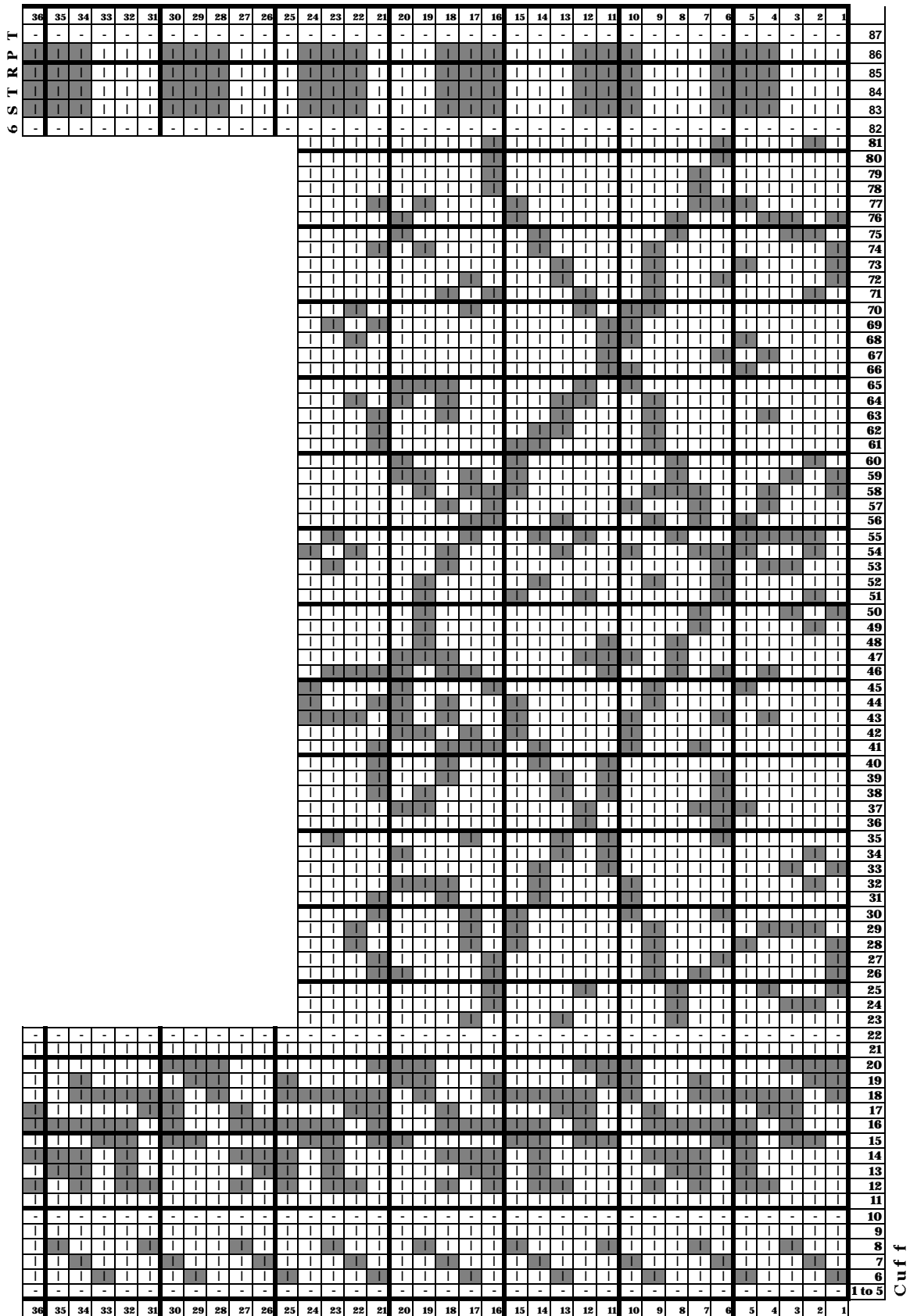


PLEASE NOTE: Graph represents instep pattern and is worked on 36 stitches  
sole pattern alternates 1 stitch each of colours A and B

TANGLED GARDEN - CHART 2 - INSTEP AND SOLE, TOE



White squares = Col A  
 All shaded squares = Col B  
 | Knit on R side  
 - Purl on R side

**BEGIN CUFF HERE**

**TANGLED GARDEN - CHART 1 - LEG PATTERN**