

## **Multibody dynamics model of head and neck function in *Allosaurus* (Dinosauria, Theropoda)**

**Eric Snively, John R. Cotton, Ryan Ridgely, and Lawrence M. Witmer**

### **ABSTRACT**

We present a multibody dynamics model of the feeding apparatus of the large Jurassic theropod dinosaur *Allosaurus* that enables testing of hypotheses about the animal's feeding behavior and about how anatomical parameters influence function. We created CT- and anatomical-inference-based models of bone, soft tissue, and air spaces which we use to provide inertial properties for musculoskeletal dynamics. Estimates of bone density have a surprisingly large effect on head inertial properties, and trachea diameter strongly affects moments of inertia of neck segments for dorsoventral movements. The ventrally-placed insertion of *m. longissimus capitis superficialis* in *Allosaurus* imparted over twice the ventroflexive accelerations of a proxy control insertion lateral to the occipital condyle, the latter being its position in nearly all other theropods. A feeding style that involved defleshing a carcass by avian-raptor-like retraction of the head in *Allosaurus* is more probable than is lateroflexive shake-feeding, such as that seen in crocodylians and inferred for tyrannosaurids.

Eric Snively. Department of Mechanical Engineering, Russ College of Engineering, 249 Stocker Center, Ohio University, Athens, OH 45701, USA  
es180210@ohio.edu

John R. Cotton. Department of Mechanical Engineering, Russ College of Engineering, 249 Stocker Center, Ohio University, Athens, OH 45701, USA  
cotton@ohio.edu

Ryan Ridgely. Department of Biomedical Sciences, Heritage College of Osteopathic Medicine, Ohio University, Athens, OH 45701, USA  
ridgely@ohio.edu

Lawrence M. Witmer. Department of Biomedical Sciences, Heritage College of Osteopathic Medicine, Ohio University, Athens, OH 45701, USA  
witmerl@ohio.edu

Keywords: Dinosauria; biomechanics; feeding; multibody dynamics; muscle

---

## INTRODUCTION

### *Allosaurus* Musculoskeletal Anatomy

*Allosaurus* was the most common dinosaurian predator in its ecosystems during the Late Jurassic of North America (154–148 Ma; Foster, 2007). There are at least two species of *Allosaurus* (Chure, 2000; Loewen, 2009). These and other taxa in Allosauroida had ball-and-socket joints between their opisthocoelous vertebral centra (Madsen, 1976; Holtz et al., 2004; Brusatte and Sereno, 2007), suggesting a highly mobile neck. This morphology contrasts with tyrannosaurid theropods of similar size to allosauroids, such as *Tyrannosaurus rex*, in which the centra have amphiplatyan (flat) intervertebral joints (Brochu, 2003). *Allosaurus* crania have ventrolaterally sweeping paroccipital processes, with unusual muscle attachments that suggest powerful ventroflexion of the head (Bakker, 1998[2000]; Rayfield et al., 2001; Snively and Russell, 2007a; Carrano et al., 2012). Computer modeling of range of motion and musculoskeletal dynamics enables testing of hypotheses related to *Allosaurus* feeding, and will guide more elaborate investigations of anatomy and feeding in this apex predator.

### Multibody Dynamics of Head and Neck Motion

Dynamics of head and neck motion have precedent in studies of humans and other extant animals. Dynamic simulations of head and neck function in humans (Delp and Loan, 1995; Vasavada et al., 1998, 2008a, b; van Lopik and Acar, 2007; Marin et al., 2010) enable non-invasive, exploratory analyses with precise control over input variables. Analogous benefits apply to simulations of extinct animals, for which in vivo study is impossible and most parameter values are unknown. Non-human models of head-neck function have concentrated on feeding in reptiles. For example, Moazen et al. (2008a) simulated dynamics of biting in the lizard *Uromastix*, incorporating complex aspects of muscle force production, and validation with experimental data, as inputs for finite element analysis of bite stress. Curtis et al. (2010a,b) constructed a model of the tuatara *Sphenodon* (including neck muscles) to examine the effects of muscle activation levels on bite force and neuromuscular control. Modeled bite forces were lower than the forces that the tuataras exerted experimentally (Curtis et al., 2010b). Moazen, Curtis, and colleagues used the software MSC Adams (MSC Software, Santa Ana, California, USA; see Appendix 1) for their simulations.

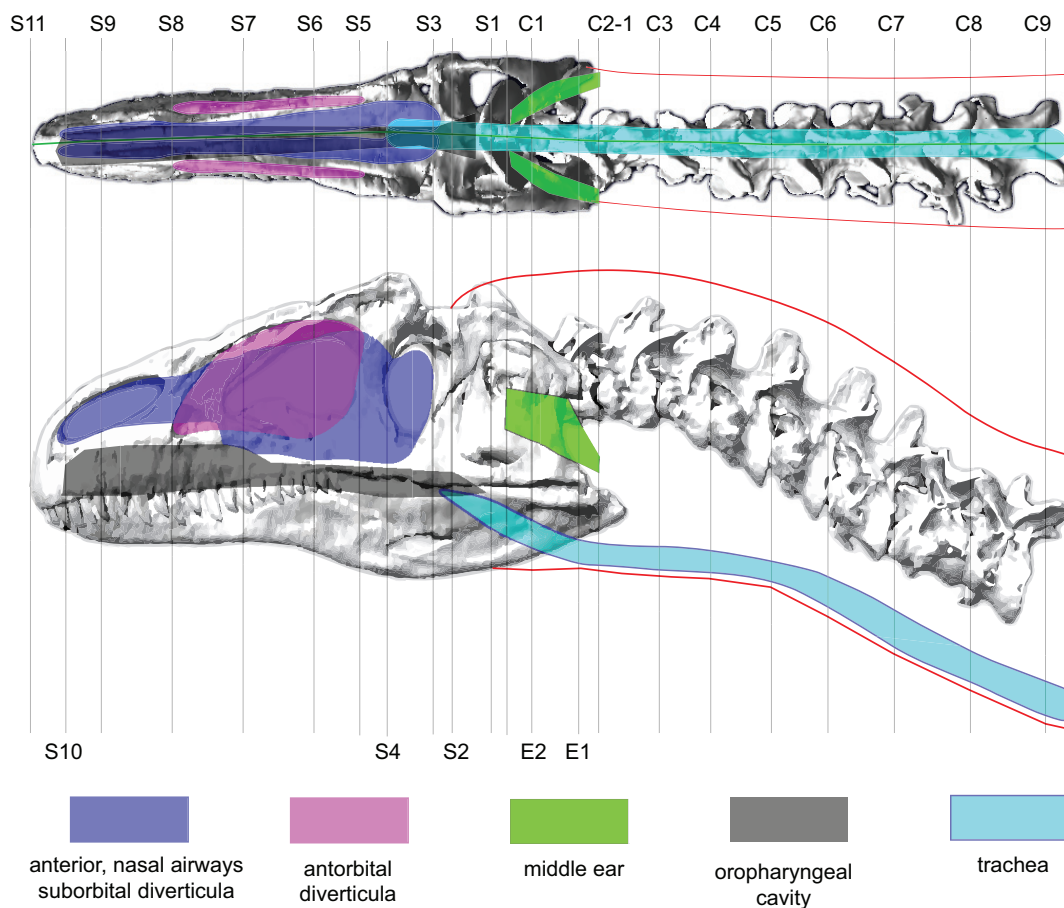
Bates and Falkingham (2012) bridged extant and fossil dynamics with simulations of biting in humans, *Alligator*, *Tyrannosaurus*, and *Allosaurus*. Their dynamic simulations found higher bite forces in *Allosaurus* than expected from previous static analyses based on finite element reaction forces (Rayfield et al., 2001). Bates and Falkingham's (2012) analyses showed the versatility of multibody dynamics methods, adapting the free program GaitSym which is normally applied to simulate locomotion (Sellers et al., 2009; <http://www.animal-simulation.org>).

### Feeding Apparatus Dynamics of *Allosaurus*: Goals and Hypotheses

Using multibody dynamics, we can simulate head and neck motions in *Allosaurus* with ranges of parameter values, enabling us to estimate inertial properties and accelerations of its head and neck and circumscribe possible feeding behavior. There are three potential benefits to this approach. First, we can quantify the functional morphology behind the ecological success of a widespread and long-lasting carnivorous taxon. Second, lessons from constructing the multibody dynamics model will establish its effectiveness and methods of best use for comparative studies of other taxa, including large Morrison theropods such as *Ceratops* that partitioned predatory niches with *Allosaurus* (Foster, 2007). Finally, we can address explicit hypotheses about neck function that are difficult to test by other means.

Neck muscles of large theropods varied in morphology, relative size, and functional capability. Snively and Russell (2007a) presented measurement and statistical evidence that *Allosaurus* had smaller dorsiflexors than adult tyrannosaurids of equivalent size. Conversely, Snively (2006) established morphometrically that allosauroids had larger ventroflexive moment arms than did tyrannosaurids, and that *Allosaurus*'s insertion of *m. longissimus capitis superficialis* may have further increased ventroflexive torque. The effect of this insertion on ventroflexive angular accelerations has yet to be quantified.

By comparing angular accelerations, we test the hypothesis that unusual muscle attachments below the level of the occipital condyle of *Allosaurus* conferred more rapid ventroflexion than if the muscle inserted in the same coronal plane as the condyle. Such a lateral insertion is present in nearly all other theropods. Misplacing it here in *Allosaurus* serves as a control, enabling us to compare ventroflexive accelerations in the “real” mor-



**FIGURE 1.** Lateral and dorsal profiles of *Allosaurus* (MOR 693) used for 3D reconstructions. Air spaces are color coded as transparent objects; colors may appear darker where the rendering of the bone is darker. Lines labeled as C represent cervical (neck) segments associated with respective cervical vertebrae, as S represent divisions of the skull and head. E=ear, C=cervical, S=skull.

Specific landmarks: E1 and E2, intermediate segments of the middle ear cavity. C2-1, posterior of these vertebrae and the skull, except the retroarticular process. S1, top of parietals. S2, anterior edge of visible jaw muscles. S3, posterior edge of orbit. S4, posterior edge of lacrimal. S5, anterior edge of lacrimal's jugal ramus, posterior edge of antorbital sinus. S8, anterior extent of antorbital sinus. S10, anterior extent of bony nostril.

phology and a proxy basal condition. Greater ventroflexive acceleration would have behavioral consequences for *Allosaurus*, perhaps enabling rapid downward strikes (Bakker, 1998[2000]; Rayfield et al., 2001) and augmented bite force by slower motions (Antón et al., 2003), compared with ecological contemporaries such as *Torvosaurus* and *Ceratosaurus* (Foster, 2007).

## MATERIALS AND METHODS

### Bone and Soft Tissue Geometry

The *Allosaurus* skull specimen used is a cast of Museum of the Rockies (MOR) 693, scanned at a slice thickness of 300  $\mu\text{m}$  on a Toshiba Aquilion 64 computed tomographic (CT) scanner at O'Bl-

ness Memorial Hospital (Athens, Ohio). Chure (2000), Loewen (2009), and Chure and Loewen (unpublished data) have reviewed the specimen's species taxonomy. Here we defer to upcoming publications by these authors and refer to the animal simply as *Allosaurus*, omitting the species designation. To calculate mass, centers of mass (COM), and mass moments of inertia ( $I$ ), the head and neck geometries of *Allosaurus* (including major air spaces) were modeled in Solid Edge (Siemens PLM, Köln, Germany) as a series of lofted elliptical frusta. For non-elliptical cross sections, we derived equations to obtain  $I$  for any super-elliptical frusta (Appendix 2) with the same radii as the Solid Edge lofts.

We used CT-based reconstructions of the cervical vertebrae and skull of MOR 693 (Figure 1) to obtain dimensions and anteroposterior position of each cross section. Dorsal- and lateral-view soft-tissue outlines (Figure 1) were reconstructed based on the CT-based bone geometry and muscle and other soft-tissue inferences (Tsuihiji, 2005, 2007, 2010; Snively, 2006; Snively and Russell (2007a, b). The skull is taphonomically sheared and crushed transversely, but modeling it symmetrical in dorsal view brought its width closer to that of Loewen's undistorted reconstruction of the skull (figure 2.4 in Loewen, 2009). Dorsal and lateral outlines were traced in Adobe Illustrator and scaled to the lengths of the original specimen. Lines transecting both views at anteroposteriorly equivalent points (Figure 1) guided collection of coordinates in the program Plot Digitizer (plotdigitizer.sourceforge.net/) at longitudinal ( $x$ ), vertical ( $y$ ), and transverse ( $z$ ) positions (Henderson, 1999). The  $x$ - $y$  coordinate origin of the drawings was placed at the posterior ventral point of the segment containing cervical vertebra C9, which became the origin point for positioning ellipses in Solid Edge.

The cranium of *Allosaurus* extends posterolaterally beyond the occipital condyle. The anterior neck segment was therefore modeled as a frustum wedged between these wings of the occiput and lower jaws. The skull was modeled with a lofted cutout posteriorly, forming the inverse shape of the frustum. This simplified reconstruction facilitated the modeling process, but does not capture the posteroventral slope of the occipital region or the width of neck muscles inserting dorsally onto the parietals (which are wider than the occipital condyle). However, these regions were continuous in life, and the method replicates their collective mass and  $I$  necessary for calculating dynamic outcomes.

### Trachea and Air Space Geometry

The same geometric slicing methods (Henderson, 1999) served for reconstructing air spaces and other internal features. The esophagus is enormously distensible, but in tetrapods generally it is a collapsed potential space along much of its length. Our models treated the esophagus as empty and collapsed for calculating  $I$ . The trachea lies adjacent to the esophagus, ventral to the prevertebral space and muscles, between the prevertebral and pretracheal fasciae. In birds the trachea is loosely anchored to the vertebral column within these fasciae, and its position shifts as the bird turns its neck. However, once exiting the pharynx, the trachea is fairly close to the ventral edge of the

neck in both birds and crocodylians, and deviates from the midline in birds only at the transition between cervical and dorsal vertebrae, often entering the thoracic cavity lateral to the vertebrae and posterolateral neck muscles (Snively, 2006).

The trachea was modeled with two respective diameters to account for unknown scaling relationships and to examine sensitivity of inertial properties to estimates of tracheal size. Hinds and Calder (1971) derived an equation for birds relating average tracheal diameter  $d_{trachea}$  to body mass  $m$ .

$$1) \quad d_{trachea} = 0.531m^{0.348}$$

These authors excluded ostriches from their sample, because they lacked body mass or all tracheal dimensions from their ostrich samples. However, applying Equation 1 to ostriches of known  $m$  and  $d_{trachea}$  yields average  $d_{trachea}$  within +11/-2% of the actual values (Fowler, 1991). By Equation 1,  $d_{trachea}$  for this *Allosaurus* (with a best estimate  $m$  of 1500.91 kg; Bates et al., 2009) is 6.78 cm. Birds have proportionally longer necks than did *Allosaurus*, and the mass of *Allosaurus* is one to four orders of magnitude greater than any bird in Hinds and Calder's (1971) sample. We therefore derived regression Equation 2 from their data on relatively short-necked galliform birds (Hinds and Calder, 1971).

$$2) \quad d_{trachea} = 0.2959 \log m - 0.3406$$

This regression resulted in  $d_{trachea}$  of 4.0 cm for *Allosaurus*, which is a tentative estimate given the low sample size from Hinds and Calder (1971) and other uncertainties.

Transect lines crossed landmarks associated with major air spaces in the head (Figure 1), including the ventral edge of the trachea. For the oral cavity and oropharynx, landmarks included the anterior and ventral edges of the palate, the choanae, and approximate relative positions of the glottis and dorsal surface of the tongue, based on comparisons to dissected archosaurs (Snively, 2006). The nasal airway, olfactory region, and sub-orbital sinus were modeled as one space, because the extents of soft tissues (including conchae) are unknown. Witmer (1997), Witmer and Ridgely (2008), and Dufeu (2011) described bony correlates and soft-tissue constraints for antorbital and middle ear sinuses (Figure 1).

### Tissue Densities

Without data on pneumatic spaces within the neck of *Allosaurus*, an average density of 1060 kg/m<sup>3</sup> (that of skeletal muscle: Witmer and Ridgely, 2008) was assigned to all tissues of the neck seg-

ments. The combination of substantial neck musculature (Snively and Russell, 2007a; Bates et al., 2009), dense bone, vasculature, and vertebral air spaces would presumably converge towards this density value. Samman (2006; in press) has established that vertebral centra of tyrannosaurs have ostrich-like camellate pneumaticity (with many small chambers: Britt, 1993). *Allosaurus* generally resembled these large theropods in pneumaticity of the vertebral centra (O'Connor, 2006; Benson et al., 2012). However, sizes of pneumatic diverticula (epithelial air-filled sacs lateral to and within the centra) are unknown for *Allosaurus* and vary along the necks of individual anseriform birds (O'Connor, 2004). A neck tissue density of 1060 kg/m<sup>3</sup> for *Allosaurus* may be conservatively high (Wedel, 2005; Bates et al., 2009), although the modeled trachea reduces the overall density of neck segments.

Unlike the neck, the skull of *Allosaurus* is a more open structure with clear indication of bone-versus air-space volume. To estimate density, mass, center of mass, and *I* of the entire head, we incorporated bone volume and density, head volume (including and excluding air spaces), and soft-tissue density. Avizo calculated the volume of bone from segmented CT geometry. The CT dataset is missing the right lower jaw, but the left mandible is present. We segmented the left mandible and, assuming bilateral symmetry, added its volume to the total. We subtracted the volume of hollow air space within the nasals, based on the specimen's dimensions and cross-sectional data from CT scans of other *Allosaurus* nasals (Snively et al., 2006). Overall head volume, with and without air spaces, was taken from the Solid Edge reconstructions.

Density of head soft tissues  $\rho_{ST}$  was set at 1050 kg/m<sup>3</sup> (Witmer and Ridgely, 2008). The skull was assumed to be predominately but not exclusively compact bone (Snively et al., 2006; also in tyrannosaurs: Brochu, 2003, Shychoski unpublished data). Bone densities  $\rho_B$  were varied parametrically based on data from Witmer and Ridgely (2008) and Dumont (2010). Witmer and Ridgely (2008) calculated a mean of 1350 kg/m<sup>3</sup> for skull bone of crocodylians and mammals, which is realistic for a combination of compact and cancellous bone. Birds have high  $\rho_B$  from 2100 to 2300 kg/m<sup>3</sup> (Dumont, 2010), which maintains high stiffness at low mass. Birds are the closest living relatives of *Allosaurus*, but the large theropod lacks flight constraints on skull mass. A  $\rho_B$  of 1750 kg/m<sup>3</sup> (Dumont, 2010) may be realistic for the skull's

compact bone (Cowin, 2001), although cancellous bone would bring the overall density down. Bone densities of greater than 1350 kg/m<sup>3</sup> (Witmer and Ridgely, 2008) probably represent overestimates, and will contribute to conservatively low estimates of head accelerations.

With estimates of  $\rho_{ST}$  and  $\rho_B$ , it was possible to calculate an overall tissue density,  $\rho_{tissue}$ , for the volume of the head not taken up by air spaces. This combination of densities will not affect estimates of head mass, but will be less accurate for *I* and COM because bone and soft tissue are not consistently distributed throughout the head. Ideally we would model full bone and soft-tissue reconstructions for *Allosaurus*, with validation through MRI and CT segmentation modeling of all head tissues of extant archosaurs. For now, we feel assigning a uniformly distributed average  $\rho_{tissue}$  is an adequate approximation, because head tissues were distributed about the centralized airways and antorbital diverticula. The head tissues of *Allosaurus* had concentrations of high densities anteriorly (tooth-bearing bones) and posteriorly (braincase and jaw muscles), and dorsal bone of the skull roof offset with a greater volume of soft tissues ventrally. No model can capture this balance of masses with perfect accuracy. However, assigning uniform tissue densities probably yields coordinates of the COM (and *I* about it) close to realistic values, subject to testing by future detailed modeling and validation studies.

We can estimate anatomically realistic ranges of  $\rho_{tissue}$  by combining relative volumes and absolute densities ( $\rho_B$  and  $\rho_{ST}$ ) of bone and soft tissues. We calculated volume fractions of bone and soft tissue (BVF and SVF) by subtracting Avizo-calculated bone volume from overall head volume; SVF was the volume remaining. Bone and soft tissue volume fractions (the volume of the head that does include air spaces) add up to one for all tissue in the head. The tissue density was then found by the rule of mixtures

$$3) \quad \rho_{tissue} = \rho_B \times BVF + \rho_{ST} \times SVF$$

### **Masses, Centers of Mass, Mass Moments of Inertia**

We used Solid Edge to calculate mass, center of mass, and *I* of the neck segments, based on external geometry and the two tracheal models, and applied equations in Appendix 2 to calculate values for non-elliptical cross sections. We rotated local coordinate systems at segment centers of mass in Solid Edge to match the global system in

Adams to ensure that  $I$  would be about equivalent axes in the two programs. Calculations for the head incorporated all variants of bone density (Witmer and Ridgely, 2008; Dumont, 2010), as well as models with and without air spaces. A head model without air spaces is unrealistic, but a solid model is informative for comparing dynamic results between easily-constructed models versus anatomically intensive models that include air spaces and bone densities.

The Adams model consisted of CT-based bone geometry for attaching muscles and visualizing range of motion, and inertial properties of the Solid Edge reconstructions were applied to the bones. The head center of mass was within the envelope of the Solid Edge model, but outside the bone of the CT-based Adams model (occupying a point equidistant between the lacrimal bones). Adams requires that center of mass be placed on or within the surface of a geometry, and centers of mass were therefore placed at a point associated with a sphere added to the skull's geometry.

### **Muscle Geometry, Cross-sectional Area, and Force**

Muscle attachments and reconstructions were based on data in Snively and Russell (2007a,c) and Tsuihiji (2005, 2007, 2010). Forces were estimated only for those muscles with unambiguous origins and insertions (Snively and Russell, 2007a, c; Tsuihiji, 2005, 2007, 2010), including *m. longissimus capitis superficialis*. Muscles with more ambiguous attachments, including *m. complexus* and the parts of *m. splenius capitis*, were not incorporated into the simulations. These muscles were not involved in ventroflexion (Snively, 2012) and not relevant to testing our hypothesis.

Muscle action was modeled assuming constant force. Future models will incorporate spring-damper qualities of muscles with force varying with length and velocity (Gordon et al., 1966; Otten, 1987; van Ruijven and Weijs, 1990; Westneat, 2003; Curtis et al., 2008, 2010 a, b; Moazen et al., 2008a, b; Domire and Challis, 2010; Winters et al., 2011; Bates and Falkingham, 2012; Miller et al., 2012). A muscle's maximum force  $F_{max}$  at a given length or velocity is proportional to its cross-sectional area. We estimated muscle cross-sectional areas using the methods of Snively and Russell (2007b): radii of reconstructed muscles are measured from scaled lateral and dorsal (or ventral) drawings, and area is then calculated assuming a superelliptical cross section with an exponent of 2.5 (Snively and Russell, 2007b). Areas were cal-

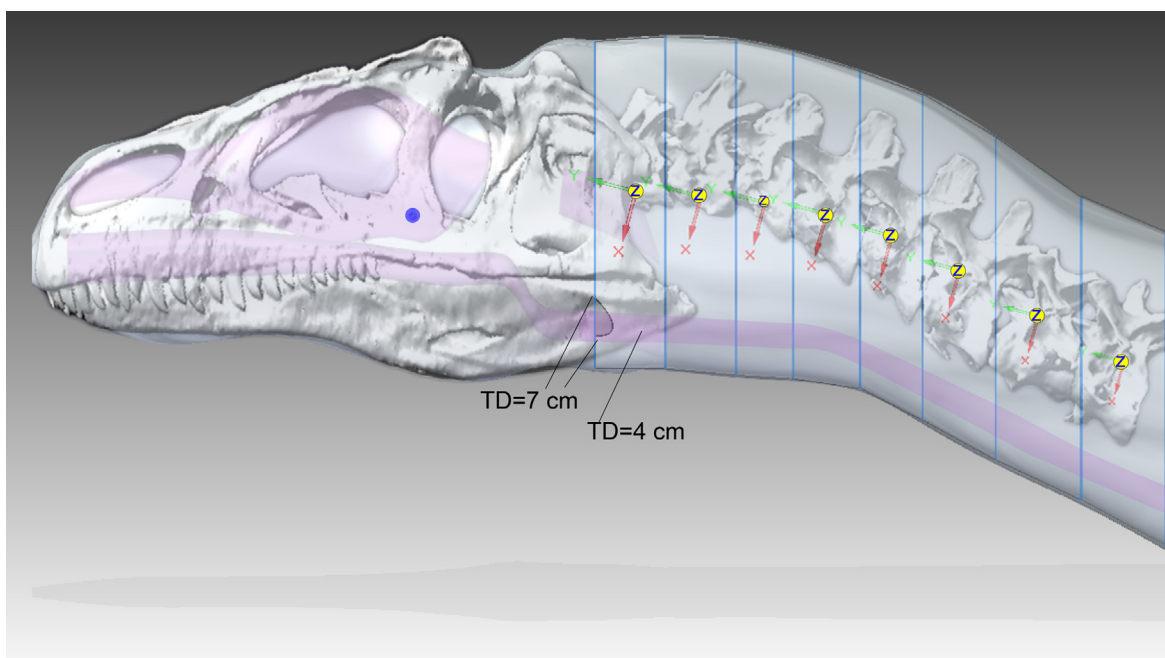
culated for baseline and robust (+10% in radius dimensions) reconstructions.

To obtain a baseline force for the muscles, we multiplied these areas by a specific tension ( $ST$ ) of muscle. Specific tension varies widely between studies. Curtis et al. (2010b) determined an isometric  $ST$  for reptile muscle of 82.5 N/cm<sup>2</sup>, and cited still higher values. Isometric  $ST$  can be 1.5 times greater than concentric (shortening) force (Snively and Russell 2007b). We therefore applied a value of 55 N/cm<sup>2</sup> as a baseline concentric  $ST$  of *Allosaurus* neck muscles. We chose this  $ST$  because it derives from experimental results for reptile muscle, but it is at the higher end of the range reported for vertebrate muscle (usually between 20-30 N/cm<sup>2</sup>: Bates et al., 2010). Higher specific tensions are not exclusive to reptiles and increase with moderate pennation in mammals. For example, in vivo, isometric  $ST$  of human quadriceps ranges between 55 and 60 N/cm<sup>2</sup>, consistently across age and sex (O'Brien et al., 2010).

No one  $ST$  value or derived force can be definitive. However, muscle force scales linearly with  $ST$ , and the effects of different  $ST$  estimates can be calculated with simple ratios. Sensitivity analyses tabulating (potentially infinite) variations are unproductive when parameter influences on each other are well-understood (Bates et al., 2010). As with specific tension, we did not run sensitivity analyses of the effects of muscle force on accelerations and velocities, because these quantities scale directly and predictably with forces and moments.

### **Application of Joints and Forces**

We placed markers for joints and muscle attachments by translating, rotating, and scaling the model view to ensure that the markers were on the desired locations. Forces were input as line-of-sight vectors between markers, from origin (on the "reaction" body in Adams) to insertion (on the "action", primary moving body). Muscles were constrained to pass through via points when necessary, particularly for *m. transversospinalis capitis*, which runs along the dorsal curvature of the neck (Snively and Russell, 2007b). Force directions change during simulations, as markers for origins and insertions move relative to each other. Joints function smoothly when their markers on the articulating objects share the same global coordinate position and local coordinate axes. Appendix 3 details how to position coincident joint markers in Adams.



**FIGURE 2.** The dynamics model of *Allosaurus* (MOR 693), visualized with CT skeletal data from Adams registered with the Solid Edge model of its fleshed-out geometry. Compared with Figure 1, lofting in Solid Edge has caused a bulge behind the parietals. TD=tracheal diameter; note the cutout in the anterior neck segment at TD=7 cm (as in Figure 7). The interior, purple objects are air spaces. The blue sphere is at the COM of the head, and yellow spheres and coordinate systems are for centers of mass for neck segments. The Z over each neck COM designates the transverse, Z axis of Solid Edge's coordinate system for the COM.

We applied two kinds of joints to the model, Hooke or universal joints which allow rotation about two orthogonal axes parallel to the joint surface, restricting four degrees of freedom (DOF), and revolute joints which allow rotation about a single axis, either horizontal or vertical for respective dorsoventral and lateral motions, restricting five DOF. For kinematic simulations, universal joints restricted translation while enabling other motions. For simulating accelerations of the head at the occipito-atlantal articulation, we applied revolute joints that would allow lateral and dorsoventral movements in respective analyses.

### Simulations and Justification for Assessed Qualities of Motion

Simulating dynamics beyond anatomically feasible ranges of motion would be uninformative about *Allosaurus* biology. We therefore simulated kinematics (motion without forces), in lateroflexion, dorsal and ventral flexion, protraction, and retraction, to determine the ranges of motion for dynamic simulations. We specified angular velocities at each joint: 0.2 rad/s for joints between C9, C8, and C7; 0.25 rad/s for the remaining intervertebral joints, and 0.3 rad/s for movement of the skull at

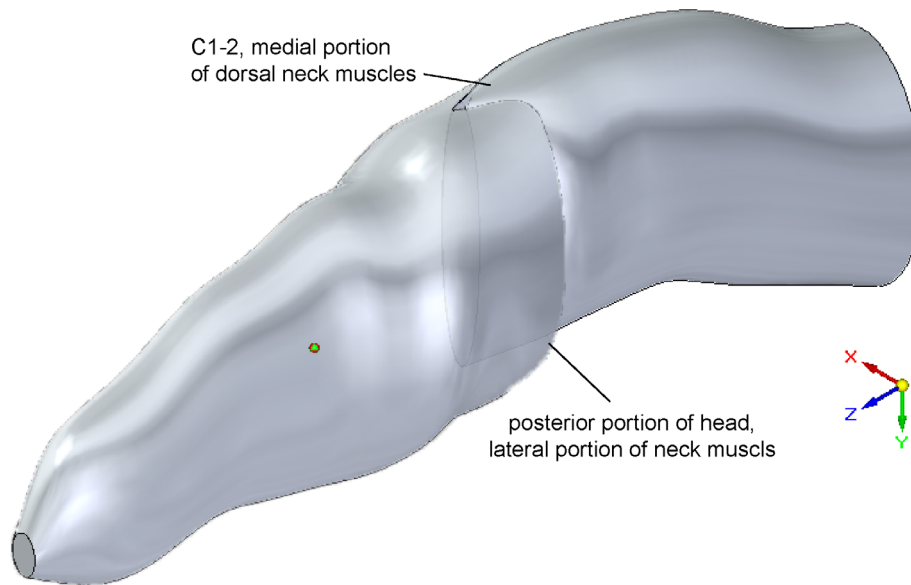
the occipito-atlantal joint. More rapid movements caused posterior vertebrae to overlap more quickly than anterior elements. We simulated each motion until bone geometry overlapped, and animated results for the longest realistic durations.

Dynamic simulations tested the hypothesis that contraction of *m. longissimus capitis superficialis* caused ventroflexion. Revolute joints at the C1-occipital condyle junction enabled motions, and fixed joints restricted motion elsewhere. We applied muscle forces that would drive the dynamics simulation, activating potentially ventroflexive muscles, and deactivating all others. We activated *m. longissimus capitis superficialis* alone to determine if it had a ventroflexive action. Gravity was active for all simulations.

## RESULTS

### External and Air-space Geometry

Figure 2 shows the Adams CT-based bone geometry registered to the Solid Edge lofted models, including external geometry and air spaces, and subsequent figures show geometry and centers of mass in more detail. Centers of mass and volume (colored spheres) are based on models



**FIGURE 3.** Dorsal oblique view of external geometry of the head and neck of *Allosaurus*, showing the lofted cutout in the head segment to accommodate the segment for cervical vertebrae 1 and 2 (C1–2). Elements of the model's geometry were positioned relative to the origin and axes of the global coordinate system (lower right). The colored sphere indicates the head's center of mass.

without air spaces. Figure 3 depicts geometry of the anterior segment of the neck fitting between the paroccipital retroarticular processes of the skull. The elliptical cross section of the head excludes cranial ornamentation and includes the space between the ridges of the nasals.

Figures 4–6 depict the head and air spaces in canonical views. Figure 4 shows how lofting in Solid Edge caused constriction of the trachea and posterior displacement of the choanae where the nasal airway meets the oral cavity (compare Figure 1 with Figures 2 and 4). In life the olfactory region and suborbital sinus would be separate. The middle ear space (pharyngotympanic sinus) is far posterior to the olfactory region (Figure 4), and appears proportionally smaller than in other large theropods (Witmer and Ridgely, 2008; Dufeu, 2011); its small size relative to the airway is especially evident in dorsal or ventral view (Figure 5). The reconstructed antorbital diverticula (air sacs in front of the eyes) are perhaps angled inwards more than was probable in life (Figure 6), to fit within the contours of the head geometry consisting of lofted ellipses. A more rectangular cross section, such as with anatomically realistic super-ellipses, would better encompass the diverticula. Solid Edge cannot easily parameterize cross sections shaped like rounded rectangles.

### Mass, Centers of Mass, and $I$ of *Allosaurus* Head and Neck Segments

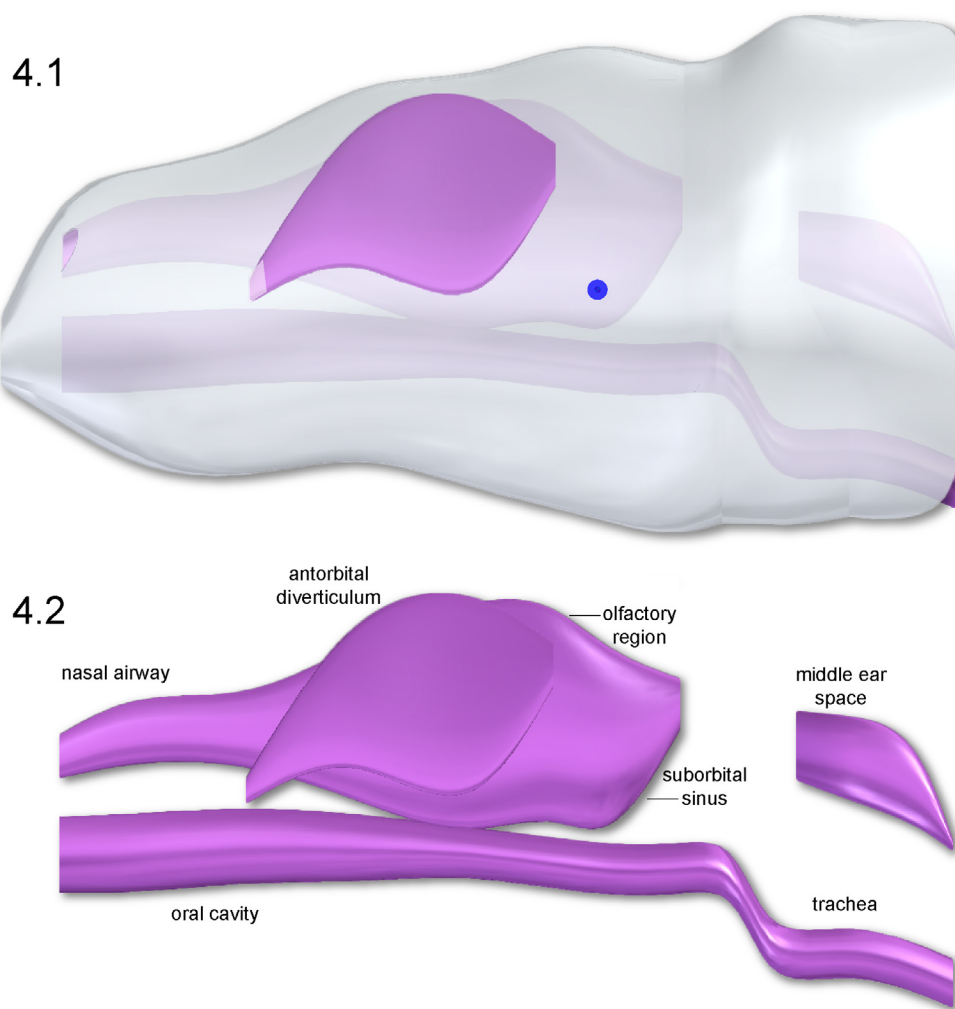
Tables 1–5 list centers of mass, volumes, masses, and moments of inertia of Solid Edge models of *Allosaurus*. Table 1 lists centers of mass (COM) for the neck assuming a solid model and with tracheas at the two estimated diameters and for the head with uniform density and with air spaces. For the neck segments, COM shifts posteriorly and dorsally by 2–5 mm as tracheal size increases (Figure 7). The head COM moves 19 mm downwards for the head with air spaces versus a solid model (Table 1).

Table 2 lists volumes, masses, and  $I$  for neck segments and the head assuming no air spaces and a uniform assigned density,  $\rho_{\text{tissue}}$ , of skeletal muscle (1060 kg/m<sup>3</sup>). Axes of rotation are oriented as in Figure 7, but (x,y,z) from Solid Edge in Tables 2–4 are equivalent to Adams axes (y,z,x) in the figure. Tables 2–4 explain all axes, and how  $I$  about these affect different types of rotation.

### Head Inertial Properties with Varied Estimates of Tissue Density

Table 3 lists tissue volumes and inertial properties of the head of *Allosaurus*, calculated assuming soft-tissue density of 1050 kg/m<sup>3</sup> (Witmer and Ridgely 2008), air spaces present, and varying densities of bone (Witmer and Ridgely, 2008;





**FIGURE 4.** (1) Lateral view of the modeled head geometry of *Allosaurus* depicting air spaces in place; the antorbital diverticulum (air sac) is superficial in position and in a darker color. The small sphere locates the COM of the remaining head tissue. (2) Air spaces within the head of *Allosaurus*. The middle ear space (pharyngotympanic sinus) extends from the eardrum to the braincase. The constricted laryngopharynx/anterior trachea is an artifact of the lofting procedure in Solid Edge.

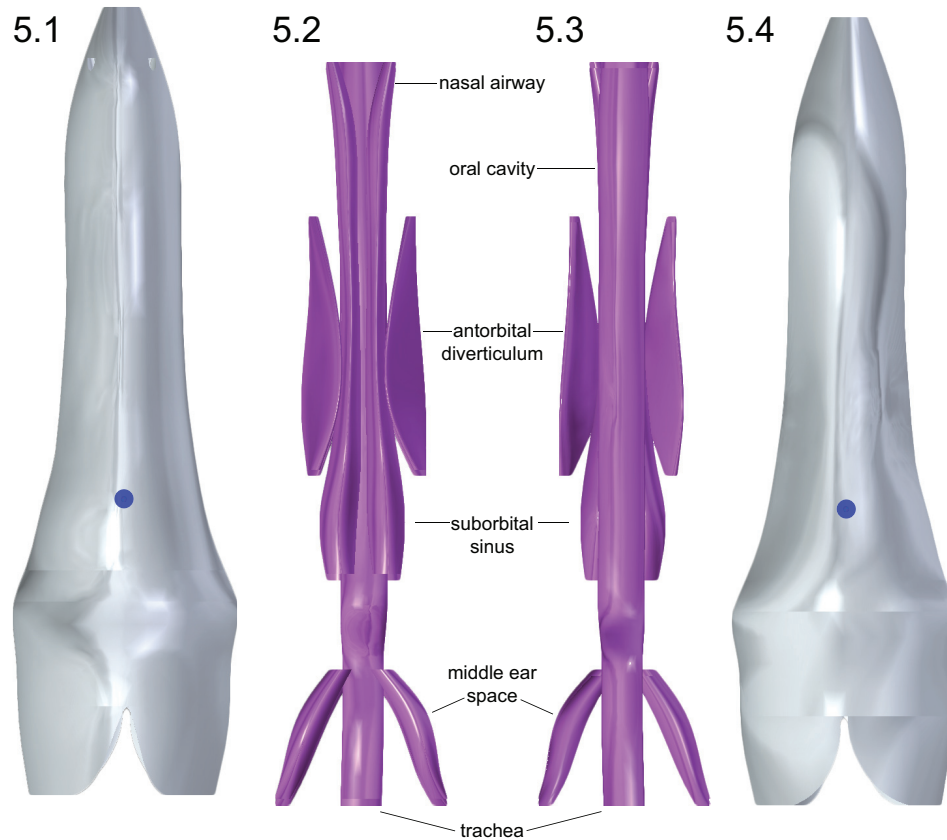
Dumont, 2010). Mass varies between 25 and 30.6 kg; the higher masses assume compact bone with  $\rho_B$  in the avian range (Dumont, 2010). With  $\rho_B$  set to the average for large amniotes (Witmer and Ridgely, 2008), mass and  $I$  are lower than in a model with a uniform, average density of  $1050 \text{ kg/m}^3$  (Table 2). With  $\rho_B$  set to a value common for mammalian compact bone (Cowin, 2001; Dumont, 2010), head mass of 27.46 kg is similar to that of the solid model (27.69 kg). However,  $I_{yy}$  is substantially greater in the realistic air space model (0.38 versus  $0.35 \text{ kg m}^2$ ), because its COM shifts posteriorly relative to that of the solid model (Table 1).

#### Effects of Estimated Tracheal Size on Mass and $I$

Table 4 presents mass and  $I$  of neck segments, with respective tracheal diameters of 6.768 and 4 cm.  $I_{zz}$  with the smaller trachea is approximately 6% greater than with the larger trachea, and  $I_{yy}$  is 2% greater. This result indicates that tracheal size has the greatest effect on mass moment of inertia about a mediolateral axis, which most strongly affects dorsoventral motion.

#### $F_{max}$ of Muscles

Figure 8 shows muscle attachments for ventroflexive muscles, and Figure 9 depicts the mus-



**FIGURE 5.** Dorsal (1 and 2) and ventral (3 and 4) views of *Allosaurus* head and air space geometry. The blue spheres locate the head COM. Slight dorsomedial inclination of the antorbital diverticula (2 and 3) was necessary to enclose the structures within the head.

cles reconstructed as slender. Table 5 lists muscle dimensions and forces from both slender and robust reconstructions; the latter have cross-sectional areas and  $F_{max}$  21% greater than in the slender, baseline reconstructions. The lateroflexor m. longissimus capitis superficialis and dorsiflexor m. transversospinalis capitis have the largest values of  $F_{max}$ . As reconstructed, the ventroflexors also have high  $F_{max}$ . Isometric force of m. longissimus capitis profundus, at 1777 N, is nearly as great as that of the large dorsiflexor m. transversospinalis capitis. Apparent cross-sectional areas of the ventroflexors would diminish as the head and neck are dorsiflexed, and their high  $F_{max}$  values must be treated cautiously.

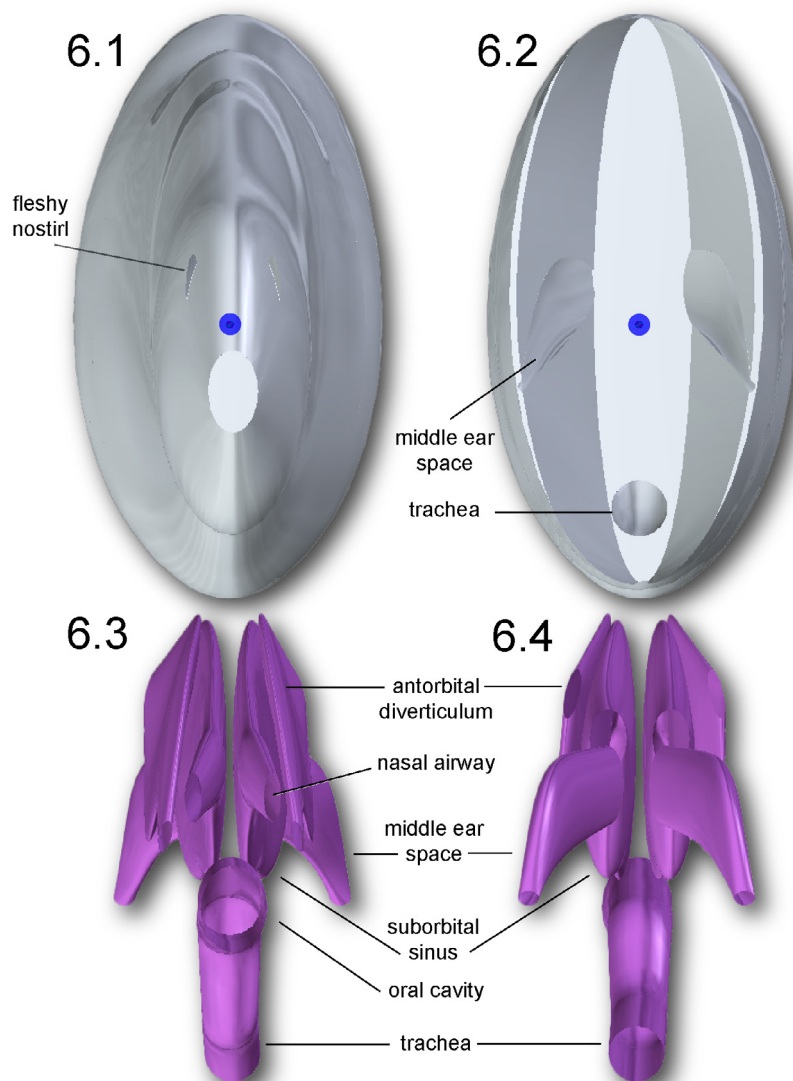
#### Kinematics: Apparent Ranges of Motion

Kinematics figures depict endpoints of animations illustrating range of motion in *Allosaurus*, with the lateral articulations (zygapophyses) shifting by 40–50% overlap from a neutral posture. Dorsiflexion, especially at the head, was undoubtedly

greater than seen here (Figure 10). The lateral range of motion evident in Figure 11 maintains smooth contact of the zygapophyses, without overlap of their modeled geometry, suggesting that greater lateral range of motion was possible. Range of motion for retraction appears to be substantial, by dorsiflexion of the posterior portion of the neck and ventroflexion of its anterior curvature (Figure 12).

#### Dynamics: Ventroflexive Accelerations

Figure 13 illustrates ventroflexion of the head of *Allosaurus* for two different durations, simulated under gravity alone, gravity plus m. longissimus capitis superficialis (MLCS), and with all muscles and gravity active for the shorter time (0.0495 sec) it took for the head to face downwards. Figure 14 graphs muscle-involved accelerations and velocities. Tangential acceleration behaves as expected under gravity alone (Figure 15). Muscle-driven simulations displace the tip of the premaxilla appreciably compared with gravity; this is especially evident for all muscles and for MLCS alone over the longer



**FIGURE 6.** Head geometry of *Allosaurus* is shown in anterior (1) and posterior (2) views, with blue spheres representing centers of mass for head tissues. Air spaces in the same respective views (3, 4) depict slight medial inclination of the antorbital diverticula.

duration (0.0735 sec: Figure 13). For all of these simulations, Figures 14–16 plot translational accelerations and velocities of the tip of the premaxilla ( $a$ ,  $v$ ) and rotational accelerations and velocities of the skull ( $\alpha$  and  $\omega$ ; Figure 16). The muscle hypothesized as ventroflexing the head of *Allosaurus*, MLCS, contributed 26% of the total maximum muscle-driven ventroflexive acceleration. With this muscle activated alone, the anterior tip of the premaxilla reached 25% of the final angular and tangential velocities that this point attained with all muscles activated (Figures 14–16).

The rate of ventral acceleration by all muscles starts to diminish after 0.04 sec (Figures 14.1,

15.2, and 15.3), as muscle lines of action become less favorable and the skull reaches its maximum ventroflexive position. MLCS still contributes to ventroflexion at and beyond this position, but other ventroflexors begin to exert a stronger retractive acceleration (in the +z direction: Figure 14).

Figure 17 illustrates greater angular acceleration  $\alpha$  with the inferred anatomical insertion of MLCS versus a control position resembling that in other theropods. The 2.5 times greater absolute value of  $\alpha$  at the start of the simulation decreases to 2.2 times at 0.08 seconds. After this duration, the angular displacement  $d\theta$  for the correct insertion is 3.8 times that of the control.

**TABLE 1.** Centers of mass of neck segments with varying tracheal diameters, and a head with a uniform assumed density and with air spaces. The dimensions are relative to the centers of the model's coordinate system. Theoretical models with no air spaces are designated Solid.

	Solid			Tracheal diameter					
				6.768 cm			4 cm		
Neck	x	y	z	x	y	z	x	Y	z
C9	9.239	507.007	-532.839	9.243	506.981	-524.370	9.241	506.998	-529.694
C8	9.484	611.316	-476.928	9.446	611.329	-467.692	9.472	611.320	-473.537
C7	9.375	708.540	-420.619	9.372	708.534	-411.045	9.374	708.538	-417.114
C6	8.743	792.622	-377.677	8.720	792.606	-367.916	8.735	792.616	-374.124
C5	8.161	872.473	-351.192	8.163	872.476	-341.086	8.161	872.474	-347.503
C4	8.998	948.314	-337.605	9.048	948.316	-327.250	9.014	948.315	-333.842
C3	9.515	1025.218	-330.166	9.513	1025.215	-326.310	9.513	1025.215	-326.310
C2-1	11.729	1103.845	-328.743	11.520	1103.238	-314.045	11.655	1103.614	-323.328
Head	Solid			Air spaces					
	x	y	z	x	y	z			
Head	11.040	1372.946	-344.703	11.100	1356.158	-347.813			

**TABLE 2.** Inertial properties of neck divisions and the head of *Allosaurus*, estimated assuming no air spaces and the density  $\rho_{\text{tissue}}=1060 \text{ kg/m}^3$  (that of muscle). For neck segments,  $I_{xx}$  is about a vertical x axis and primarily resists lateroflexion (yaw).  $I_{yy}$  is about a longitudinal y axis and resists roll.  $I_{zz}$  is about the transverse z axis and resists dorsoventral movements (pitch). Note that segment C2-1 tapers anteriorly and behaves differently than other segments. For the head, the x axis is horizontal and  $I_{xx}$  resists pitch; the y axis is vertical and  $I_{yy}$  resists lateroflexion; and the z axis is longitudinal and  $I_{zz}$  resists roll.

Segment	Vol (m <sup>3</sup> )	Mass (kg)	Mass moments of inertia (kg m <sup>2</sup> )					
			$I_{xx}$	$I_{yy}$	$I_{zz}$	$I_{xy}$	$I_{xz}$	$I_{yz}$
C9	0.006359	6.741	0.02926	0.07513	0.06812	-0.01654	-0.000007	0.000036
C8	0.006403	6.787	0.02927	0.07689	0.07158	-0.01796	-0.000002	-0.000005
C7	0.005565	5.899	0.02308	0.06947	0.06425	-0.01603	0.000156	-0.000048
C6	0.004675	4.955	0.01739	0.05716	0.05148	-0.01206	0.000161	0.000079
C5	0.004786	5.074	0.01764	0.05782	0.05268	-0.01232	-0.000027	-0.000007
C4	0.004177	4.428	0.01441	0.05228	0.04768	-0.01121	0.00001	0.000043
C3	0.004905	5.200	0.01700	0.06200	0.05800	-0.01300	-0.000015	-0.000200
C2-1	0.003422	3.627	0.00900	0.03900	0.03900	-0.00900	0.000037	0.000142
Head	0.026120	27.69	0.92420	0.34680	1.16300	0.22170	-0.000522	-0.001461

## DISCUSSION

Head masses in our model of *Allosaurus* are 40–48% of best-estimate values calculated by Bates et al. (2009) for the same specimen. Bates et al. (2009) widened the head by 20% to correct for taphonomic crushing and we widened it by 5%. Because the length and height of the head are about the same in both studies, mass and mass moments of inertia are likely to vary directly with

model width. Other probable reasons for the discrepancy include ellipses in our model compared with the straight-edged splines used by Bates et al. (2009), the dorsal concavity in our model between the parietals and lacrimal horns (Figures 2–4), the cut-out of neck muscles at the back of the head in our model, and our reconstruction of sinuses and airways (after Witmer, 1997 and Dufeu, 2011) resulting in a lower head density. Although our use of CT-based dimensions might appear to better

**TABLE 3.** Volumes and inertial properties of the head of *Allosaurus*, calculated for varying tissue densities. As in Table 2 values for the head, the x axis is horizontal and  $I_{xx}$  resists pitch; the y axis is vertical and  $I_{yy}$  resists lateroflexion; and the z axis is longitudinal and  $I_{zz}$  resists roll.

$\rho_{\text{tissue}}$ (kg/m <sup>3</sup> )	Vol (m <sup>3</sup> )	Mass (kg)	Mass moment of inertia (kg m <sup>2</sup> )					
			$I_{xx}$	$I_{yy}$	$I_{zz}$	$I_{xy}$	$I_{xz}$	$I_{yz}$
1128	0.022	25.16	0.8425	0.3490	1.0810	0.2127	-0.00051	-0.00153
1231	0.022	27.46	0.9197	0.3809	1.1801	0.2322	-0.00056	-0.00167
1321	0.022	29.48	0.9873	0.4089	1.2668	0.2492	-0.00060	-0.00179
1347	0.022	30.06	1.0066	0.4169	1.2916	0.2541	-0.00061	-0.00183
1373	0.022	30.64	1.0259	0.4249	1.3163	0.2590	-0.00063	-0.00186

**TABLE 4.** Inertial properties of *Allosaurus* neck segments, estimated with average tracheal diameters of 6.768 cm (from a regression for all birds), and 4 cm (regression for chickens and relatives; Hinds and Calder, 1971). Mass moments of inertia are as in Table 2 values for neck segments.  $I_{xx}$  is about a vertical x axis and primarily resists lateroflexion (yaw).  $I_{yy}$  is about a longitudinal y axis and resists roll.  $I_{zz}$  is about the transverse z axis and resists dorsoventral movements (pitch).

Trachea Diameter (cm)	Segment	Vol (m <sup>3</sup> )	Mass (kg)	Mass moment of inertia (kg m <sup>2</sup> )					
				$I_{xx}$	$I_{yy}$	$I_{zz}$	$I_{xy}$	$I_{xz}$	$I_{yz}$
6.768 cm	C9	0.00599	6.349	0.0282	0.0676	0.0598	-0.1451	-3.00E-06	3.40E-05
	C8	0.00603	6.388	0.0281	0.0680	0.0618	-0.0155	-3.90E-05	5.00E-06
	C7	0.00524	5.554	0.0221	0.0611	0.0551	-0.0137	1.54E-04	-4.70E-05
	C6	0.00439	4.658	0.0170	0.0498	0.0438	-0.0107	1.43E-04	-7.60E-05
	C5	0.00449	4.764	0.0176	0.0578	0.0527	-0.0123	2.70E-05	-7.00E-06
	C4	0.00392	4.159	0.0137	0.0453	0.0401	-0.0094	4.40E-05	3.30E-05
	C3	0.00480	5.088	0.0165	0.0532	0.0483	-0.0108	-1.90E-05	-1.80E-05
	C2-1	0.00311	3.302	0.0080	0.0313	0.0310	-0.0070	-7.20E-05	1.61E-03
		Vol (m <sup>3</sup> )	Mass (kg)	$I_{xx}$	$I_{yy}$	$I_{zz}$	$I_{xy}$	$I_{xz}$	$I_{yz}$
4 cm	C9	0.00623	6.604	0.0289	0.0721	0.0647	-0.0157	-5.000E-06	3.50E-05
	C8	0.00627	6.647	0.0289	0.0734	0.0677	-0.0170	-1.500E-05	-2.00E-06
	C7	0.00545	5.779	0.0221	0.0611	0.0551	-0.0137	1.540E-03	-4.70E-05
	C6	0.00458	4.852	0.0174	0.0541	0.0485	-0.0118	1.540E-04	-8.00E-05
	C5	0.00468	4.965	0.0174	0.0548	0.0494	-0.0115	2.800E-05	-7.00E-06
	C4	0.00409	4.334	0.0142	0.0496	0.0447	-0.0105	2.200E-05	3.90E-05
	C3	0.00480	5.088	0.0171	0.0584	0.0539	-0.0122	-1.600E-05	-2.00E-05
	C2-1	0.00331	3.511	0.0084	0.0360	0.0360	-0.0080	-4.000E-06	1.49E-04

approximate the original head shape, Bates et al. (2009) undoubtedly better corrected for crushing, and their octagonal splines better captured the squared-off cross-sectional shape of the head between the lower jaws. The head mass moments of inertia for *Allosaurus* in Bates et al.'s (2009) model were computed about the center of mass of the body, rather than the head as we have done, and it is inappropriate to compare these  $I$  values between the studies. By using the parallel axis theorem to compute  $I$  values for the head about estimated whole-body centers of mass (Bates et al.,

2009), the results are driven by the mass of the head and are again 40–48% of Bates et al.'s values.

Our model's transverse cross sections were ellipses, and differing shapes (Appendix 1) have predictable effects on dynamics results. More squared-off superellipsoid cross sections (with exponents of 2.3–2.5 common in vertebrates: Motani, 2001) would increase mass by 5–7%, and  $I$  by 10–16% (Appendix 1, Table A1). These values would correspondingly reduce protraction and

**TABLE 5.** Dimensions, baseline specific tension  $ST$  of 55 N/cm<sup>2</sup> (O'Brien et al., 2010), and  $F_{max}$  of reconstructed muscles of *Allosaurus*. Abbreviations: MTCP=musculus transversospinalis capitis; MTCR=musculus transversospinalis cervicis; MLCS=musculus longissimus capitis superficialis; MLCP= musculus longissimus capitis profundus; MRCA=musculus rectus capitis anterior/ventralis.

Muscle	Semi-major (cm)		Semi-minor (cm)		Area (cm <sup>2</sup> )		$ST$ (N/cm <sup>2</sup> )	$F_{max}$ (N)	
	baseline	robust	baseline	robust	baseline	robust		baseline	robust
MTCP	3.513	3.865	2.550	2.805	30.13	36.46	55	1657	2005
MTCR	2.929	3.222	2.366	2.603	23.31	28.21	55	1282	1551
MLCS	2.996	3.295	3.267	3.593	32.91	39.82	55	1810	2190
MLCP	4.531	4.984	1.753	1.928	26.70	32.31	55	1469	1777
MRCA	4.016	4.418	1.624	1.786	21.93	26.54	55	1206	1460

retraction performance (mass), and rotational acceleration and velocity ( $I$ ).

### Unusual *Allosaurus* Muscle Insertions Substantially Enhanced Ventroflexive Torque

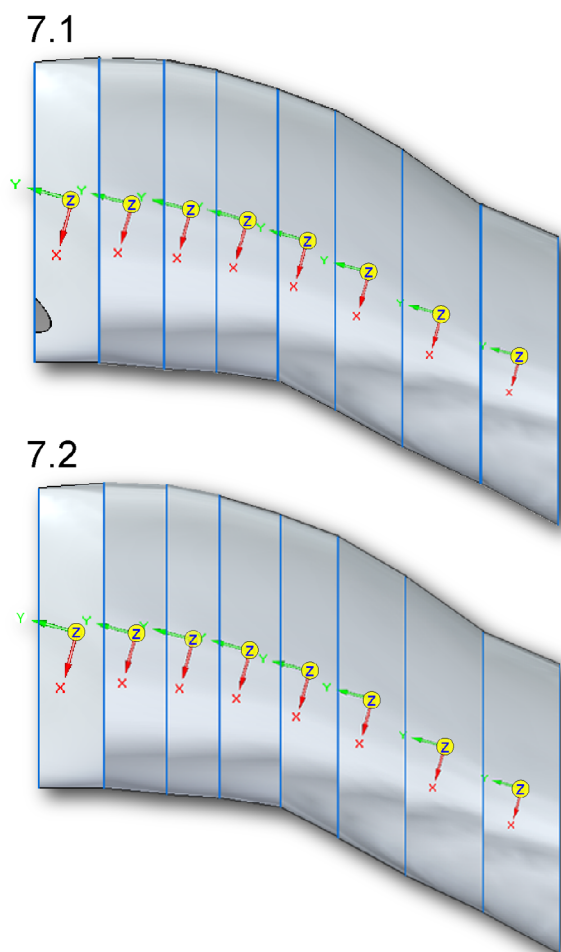
Ventroflexion simulations support the hypothesis that m. longissimus capitis superficialis enhanced ventroflexive acceleration, to over twice the magnitudes of a control analysis with a “normal” theropod insertion. Under simulated conditions (and simplified assumptions), the muscle contributes a quarter of the total-muscle driven ventroflexive acceleration (excluding gravity) in this specimen of *Allosaurus*. This specimen was distorted slightly during fossilization, and its left paroccipital process runs more directly posterolaterally than in other specimens which have a more ventral course to the processes (Bakker, 1998[2000]); eight specimens examined by Snively and Russell, 2007a, 2007c). Because this latter anatomy indicates greater ventroflexive moment arms, our model is conservative, and we predict that dynamics simulations of other specimens will corroborate the hypothesis for *Allosaurus*.

### Implications for *Allosaurus* Prey Capture and Feeding

These analyses indicate that ventroflexive angular acceleration in *Allosaurus* was greater than calculated for *Tyrannosaurus* (Snively and Russell, 2007c), as was predicted by some previous studies (Bakker, (1998[2000]); Rayfield et al., 2001; Snively and Russell, 2007c). Forceful ventroflexion supports the hypothesis that *Allosaurus* augmented its bite force by ventroflexing its upper jaws (Bakker, 1998[2000]; Rayfield et al., 2001), and suggests that it could strike downwards quickly.

Dorsoventral and protractive ranges of motion mirror those observed (Snively, 2006) and examined radiographically (Samman, 2006) in volant raptorial birds and inferred in the terrestrial phorusrhacid, *Andagalornis* (Tambussi et al., 2012). These ranges of head position suggest the efficacy of striking prey in the sagittal plane. In the posterior portion of the neck, lateral range of motion appears to be greater than observed in extant birds (Samman, 2006; Snively, 2006). Anteriorly, the lateral intervertebral range of motion is similar to that of the bald eagle *Haliaeetus leucocephalus* and snowy owl *Bubo scandiacus* (Samman, 2006), and greater than in *Tyrannosaurus rex* (figure 6.12 in Samman, 2006, Samman, in press; also examined preliminarily by Snively and Russell, 2007b). Neck and cervicocephalic range of motion in *Allosaurus* will be testable more thoroughly with methods that Stevens and Parrish applied to sauropods (Stevens and Parrish, 1998; Stevens and Parrish, 2005a, b), and Samman (2006; Samman, in press) used for tyrannosaurids.

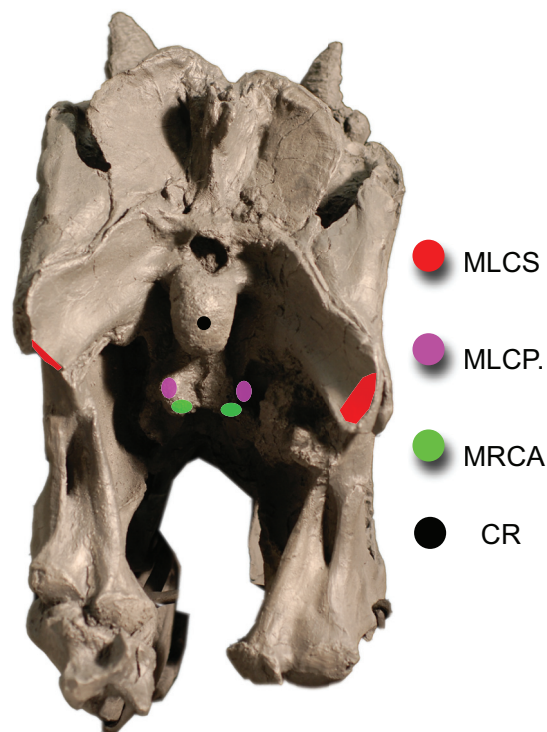
Range of motion and accelerations may be informative about how *Allosaurus* defleshed its prey. Strong ventroflexive torque suggests a more birdlike posterior pull on a carcass than crocodilian-like shake-feeding. (The latter is more likely in tyrannosaurids [Snively and Russell, 2007a, c; Witmer and Ridgely, 2009], with their great moment-generating capacity to decelerate and reverse direction of the head [Snively and Russell, 2007a]). With posterior neck dorsiflexors and anterior head ventroflexors acting in concert for head retraction, *Allosaurus* may have fed more like a large predatory bird than like a crocodile (Snively, 2006; Snively and Russell, 2007a, c). However, *Allosaurus* was probably not limited to a single strategy for removing flesh. Its laterally compressed, ziphodont



**FIGURE 7.** Centers of mass (yellow spheres) for neck segments of *Allosaurus*, determined for tracheal diameters of 6.768 cm (1) and 4 cm (2). The COM for each segment is slightly more ventral with 4 cm trachea. The 6.768 cm trachea scallops out the anterior of segment C1-2 (1) at the left of the model. Note that the axes (x,y,z) are equivalent to (y,z,x) in the Adams model and Tables 2-4.

teeth suggest forceful alternating tugs to either side of the head, as seen in Komodo dragons (Auffenberg, 1981, D'Amore et al., 2011).

The greatest magnitudes of retractive (posteroventral) acceleration of the head in the *Allosaurus* simulations occur when the head is deeply flexed relative to the neck, suggesting parallels to how specific raptorial birds strip flesh. Merlins (*Falco columbarius*), with large ventroflexors, are adept at bracing prey with their feet, holding flesh with the head highly flexed, and pulling up and back with their legs (Snively, 2006) to tear muscle and other tissue from prey. Although *Allosaurus* has large bladelikey teeth and lacks the hooked

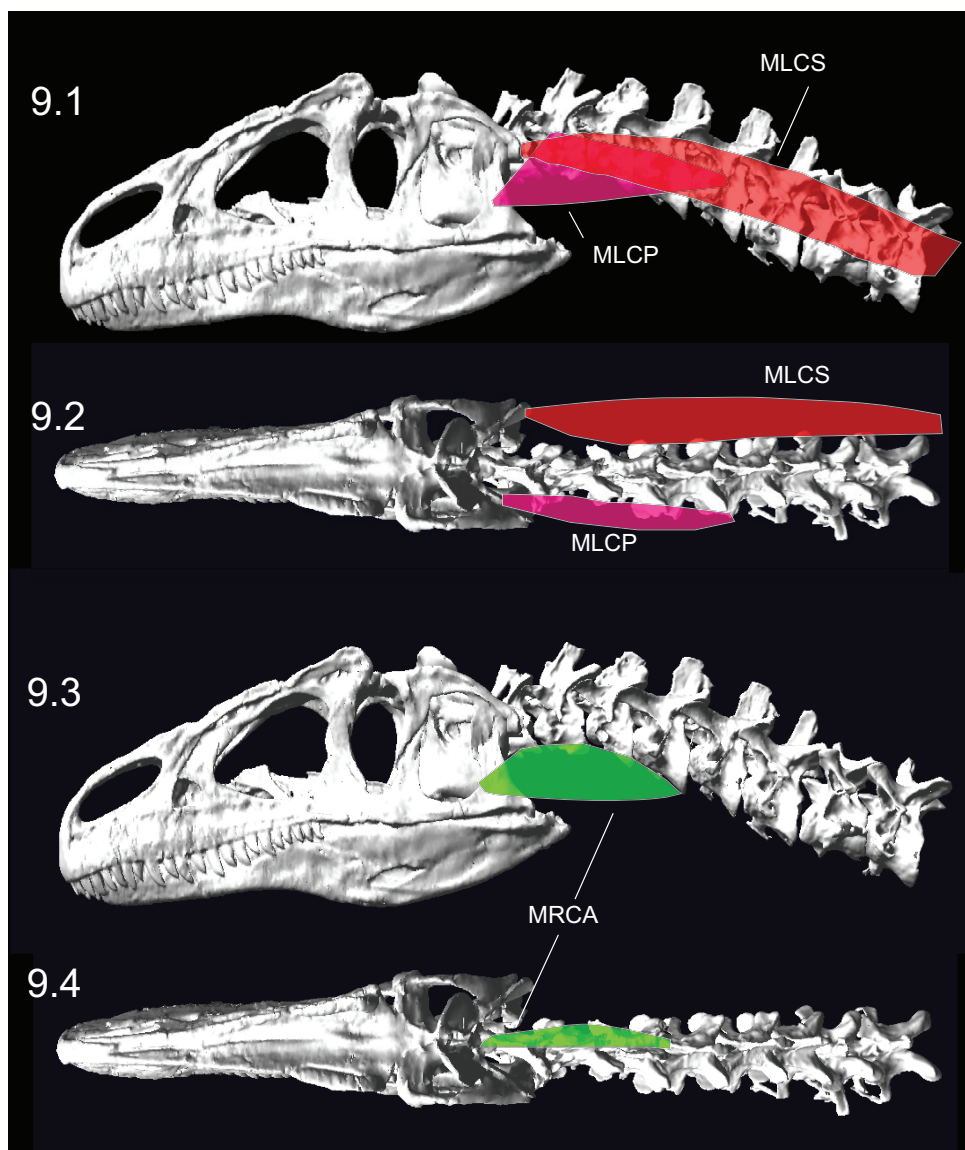


**FIGURE 8.** Ventroflexor insertions on the occiput of *Allosaurus* (MOR 693). Abbreviations: MLCS=musculus longissimus capitis superficialis. MLCP=musculus longissimus capitis profundus. MRCA=m. rectus capitis anterior/ventralis. CR=center of rotation, on the occipital condyle.

beak of raptorial birds, similarly energetic ventroflexion may have enabled analogous behavior. Assessing the likelihood of such action awaits full-body simulations that combine leg and neck function.

### Refinement and Future Directions

The current dynamic simulations were restricted to head movement only and with constant force magnitude. Applying force-velocity and force-length relationships (Curtis et al., 2008, 2010a, b; Moazen, 2008a, b; Winters et al., 2011) will enable circumscribed ranges of *Allosaurus* musculoskeletal accelerations and tests of how muscle force parameters influence the results. Current advances with MSC Adams (Kumbhar and Cotton, unpublished data) incorporate complex spring-damper splines, that include high-force eccentric contraction (at negative velocity when a muscle produces force as it lengthens: Snively and Russell, 2007a; Miller et al., 2012). We predict diminished acceleration under two conditions: as muscles become much shorter or longer than esti-



**FIGURE 9.** Reconstruction of head ventroflexors of *Allosaurus* (MOR 693) in lateral (1, 3) and dorsal (2, 4) views, with abbreviations from Figure 8. In (2) and (4), the ventroflexors m. longissimus capitis profundus (MLCP) and m. rectus capitis anterior/ventralis (MRCA) are ventral to the vertebrae.

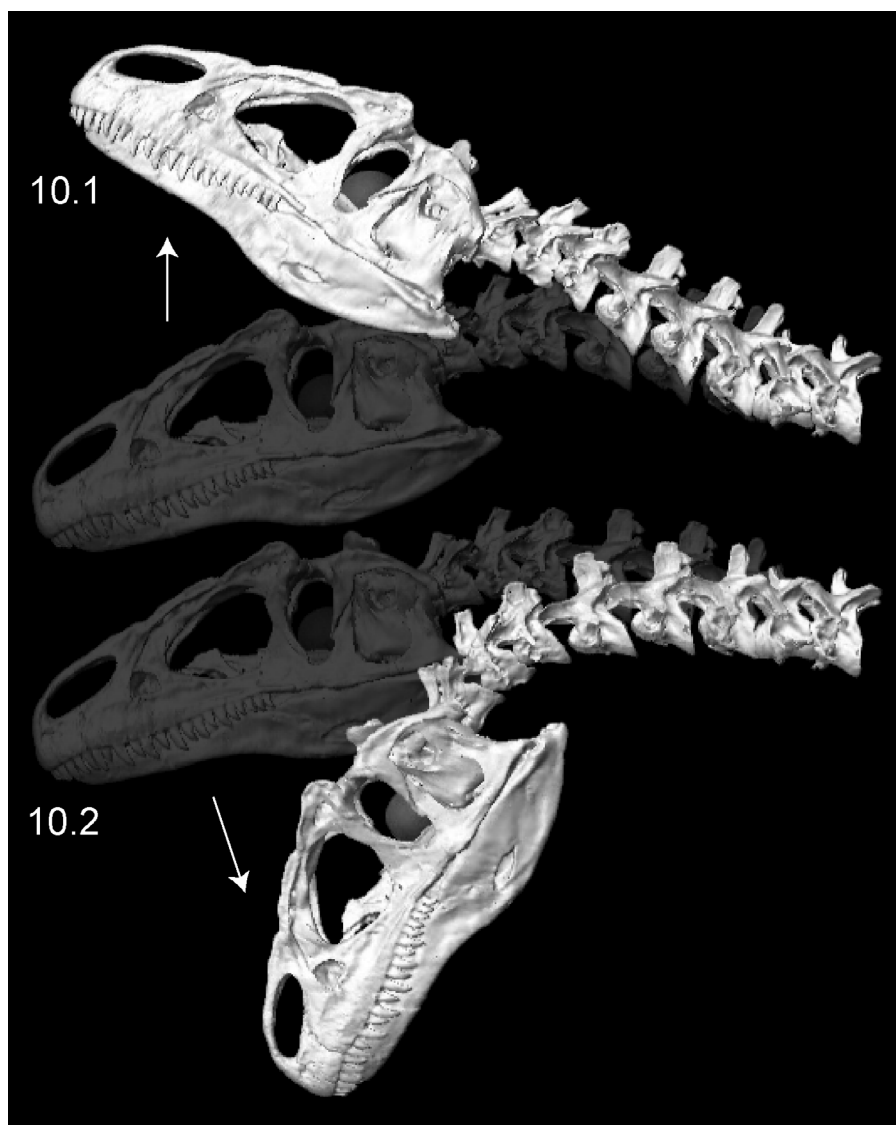
mated “optimal” lengths and at rapid contraction velocities (Domire and Challis, 2010; Miller et al., 2012). Conversely, we predict greater magnitudes of acceleration (actually deceleration) when muscles contract eccentrically to slow the head and neck as they approach their limits of excursion (Miller et al., 2012).

In addition to physiologically varying muscle force, refined articulations (including joint cartilages: Samman, 2006) will enhance confidence in our simulations. Spherical joints may simulate ball-and-socket articulations in *Allosaurus* more realistically than the revolute joints used here. Another potential advance will be to model articulations as

contact surfaces, instead of revolute or spherical joints. This method has enabled accurate simulations of pig chewing (Kumbhar and Cotton, unpublished data) which track radiographically recorded kinematics (Brainerd et al., 2010).

The increased sophistication of these methods will narrow the probable range of feeding accelerations in *Allosaurus*, but will not necessarily increase our certainty about possible and habitual behaviors. Most physiological variables will remain unknown. Simpler models, with results falling within the range from complex analyses, may bring us close enough for informative comparisons





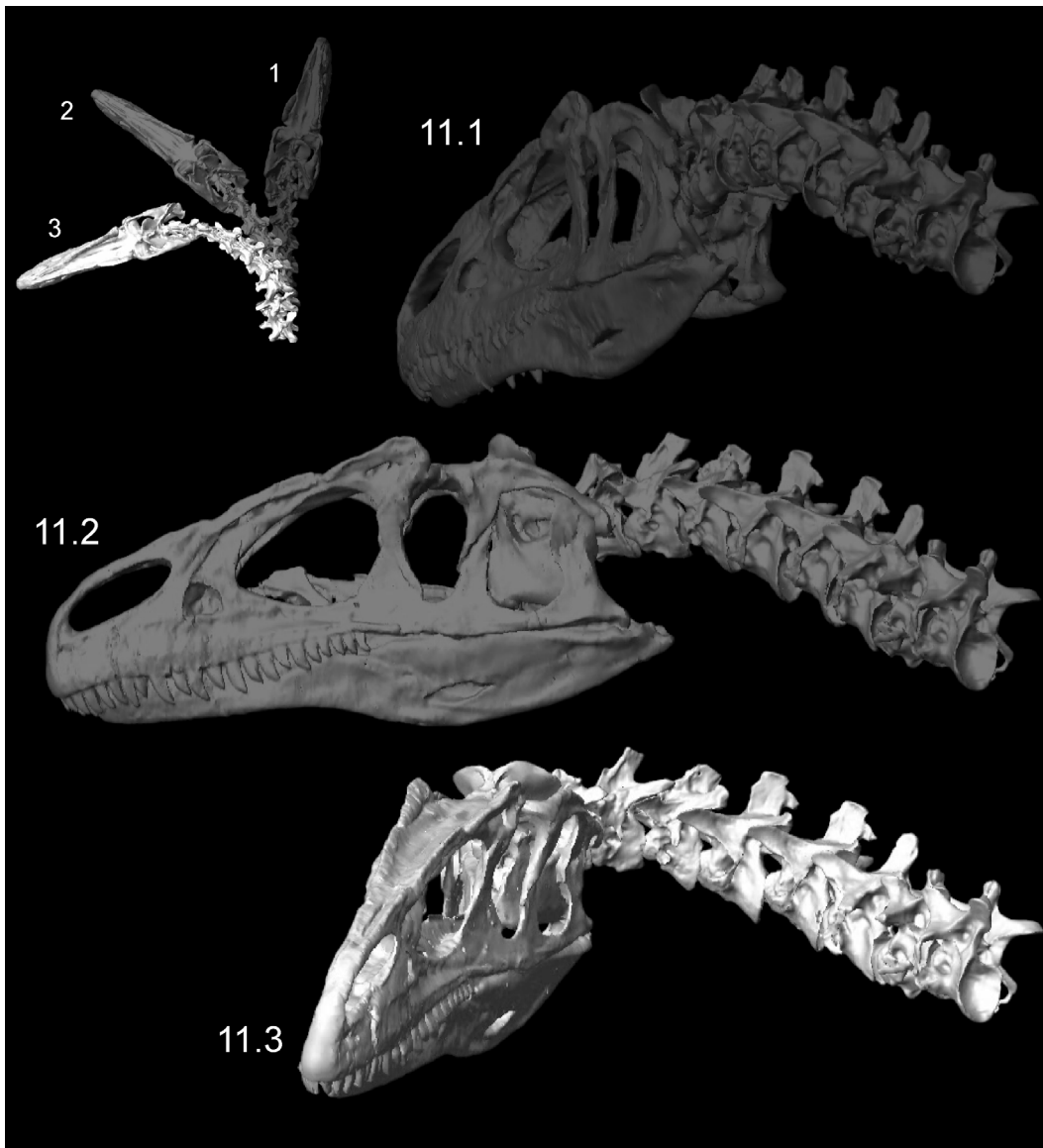
**FIGURE 10.** Dorsiflexion (1) and ventroflexion (2) of the *Allosaurus* (MOR 693) model in MSC Adams, minimizing disarticulation of the zygapophyses. The head could ventroflex at a steeper angle than simulated here (Figure 13). The transparent sphere within the cranium was used to position skull center of mass.

between *Allosaurus* and other contemporary predators.

There are three independent ways to assess how informative our simulations might be. First, studies integrating physiology, morphology, and behavioral observation (“Extant Behavioural Interpolation”: Snively, 2006; Snively and Russell, 2007c) enable systematic inference of behavior in fossil animals relative to their living relatives (Witmer, 1997). Second, correlating homologous muscle size with attachment morphology (Snively and Russell, 2007a) will become more quantitatively rigorous and specific with more studies of extant reptiles. Third, dynamic models of feeding in extant

vertebrates (Moazen et al., 2008a, b; Curtis et al., 2009, 2010a, b; Bates and Falkingham, 2012) enable validation of modeling methods against experimental results and measureable parameters.

Validation studies on modern animals, especially crocodylians and birds, are the next major step in modeling archosaur feeding dynamics. Starting with an extinct dinosaur, however, revealed hypotheses of neck retraction that will be applicable to birds. A crocodylian model would not have suggested similar kinematics, because their necks lack an anterior, dorsally convex curvature. Finally, manipulation of a virtual *Allosaurus* model may reveal restrictions on muscle paths that nei-



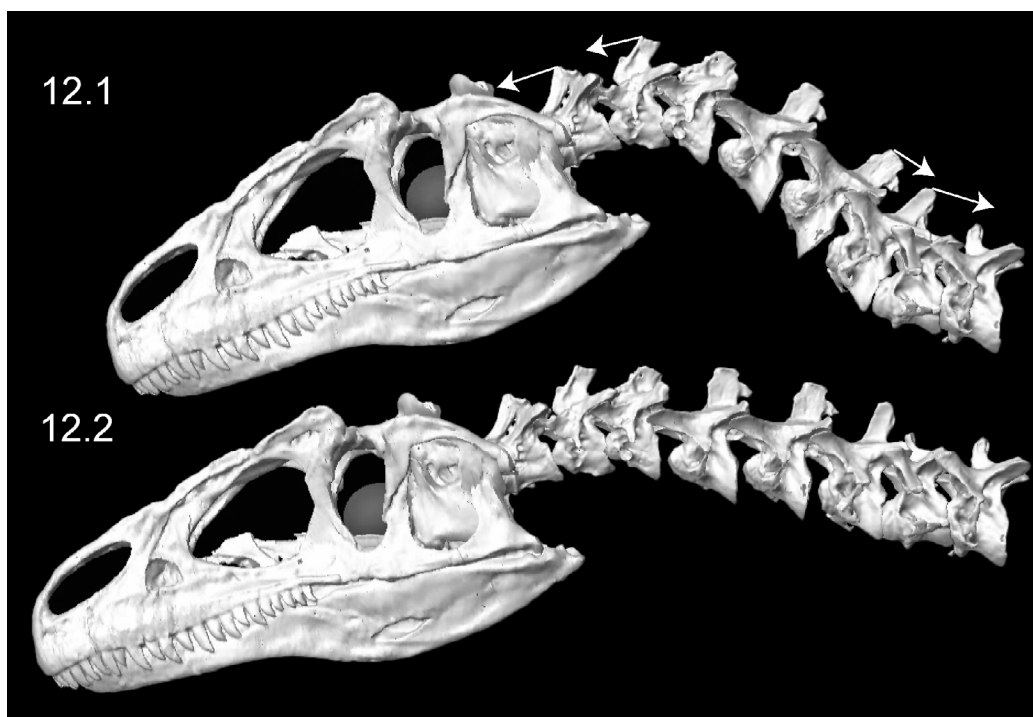
**FIGURE 11.** Left lateroflexion of the head and neck of *Allosaurus* (MOR 693), with slight right-turned (1), intermediate (2), and fully lateroflexed (3) poses. In the initial pose (1), the head and all cervical vertebrae are in posterolateral view. Note relative rotation and reasonable overlap of zygapophyses in all poses.

ther crocodylians nor birds possess. Multibody dynamics of large dinosaurs can help resolve and advance otherwise intractable hypotheses of functional morphology (Mallison, 2007, 2010; Sellers et al., 2009; Bates and Falkingham, 2012).

#### ACKNOWLEDGMENTS

Two anonymous reviewers fundamentally improved the manuscript. We thank M. Loewen for advice on specimens of *Allosaurus*, and N. Curtis and M. Moazen for discussions on using MSC Adams software. A.N. Vasavada gave us perspective on musculoskeletal dynamics software. P. May

(Research Casting International) generously loaned us casts of the *Allosaurus* vertebrae. We thank students and associates of the Witmer, Cotton, Stevens-O'Connor, and Williams labs for discussions. This research was funded by the Russ College of Engineering and Technology, the Heritage College of Osteopathic Medicine, and a Research Challenge Grant (all Ohio University), as well as grants to LMW and RCR from the United States National Science Foundation (IBN-0343744, IOB-0517257, IOS-1050154). The Ohio Supercomputing Center also provided support. For assistance with CT scanning the *Allosaurus* skull and

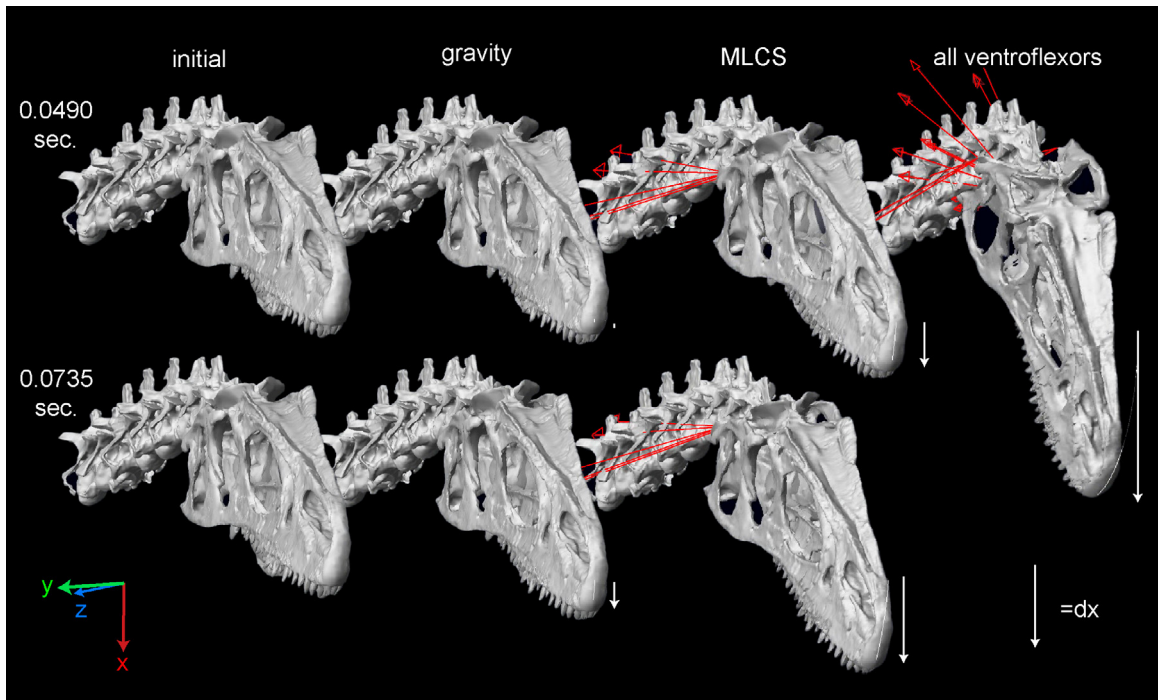


**FIGURE 12.** Retraction (1) and protraction (2) of the head and neck of *Allosaurus* (MOR 693), from kinematic simulations. The white arrows at neural spines show primary angular movements of vertebrae in retraction. The transparent sphere within the cranium was used to position skull center of mass.

neck casts, we thank Heather Rockhold, RT, and O'Brien Memorial Hospital, Athens, OH.

#### REFERENCES

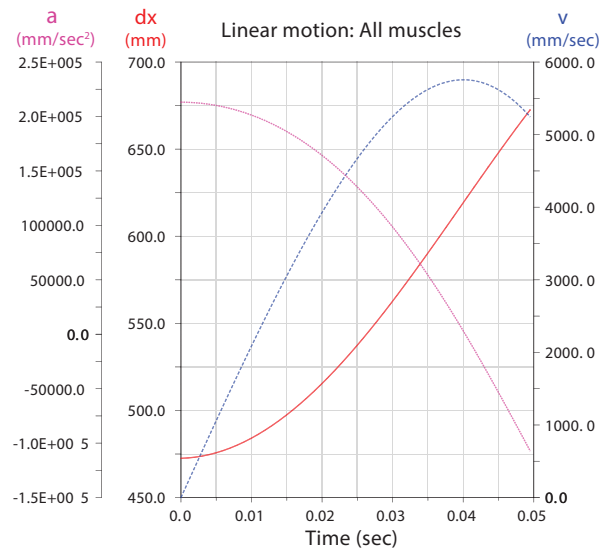
- Antón, M., Sánchez, I.M., Salesa, M.J., and Turner, A. 2003. The muscle-powered bite of *Allosaurus*: an interpretation of cranio-dental morphology. *Estudios Geológicos*, 59:313-323.
- Auffenberg, W. 1981. *The Behavioral Ecology of the Komodo Monitor*. University of Florida Press, Gainesville.
- Bakker, R.T. 1998(2000). Brontosaurus killers: Late Jurassic allosaurids as sabre-tooth cat analogues. *Gaia*, 15:145-158.
- Bates, K.T. and Falkingham, P.L. 2012. Estimating maximum bite performance of *Tyrannosaurus rex* using multi-body dynamics. *Biology Letters*, doi:10.1098/rsbl.2012.0056.
- Bates, K.T., Falkingham, P.L., Breithaupt, B.H., Hodgetts, D., Sellers, W.I., and Manning, P.L. 2009. How big was 'Big Al'? Quantifying the effect of soft tissue and osteological unknowns on mass predictions for *Allosaurus* (Dinosauria: Theropoda). *Palaeontologia Electronica*, 12(3):33 pp. [http://paleo-electronica.org/2009\\_3/186/index.html](http://paleo-electronica.org/2009_3/186/index.html)
- Bates, K.T., Manning, P.L., Margetts, L. and Sellers, W.I. 2010. Sensitivity analysis in evolutionary robotics simulations of bipedal dinosaur running. *Journal of Vertebrate Paleontology*, 30:458-466.
- Benson, R.B.J., Butler, R.J., Carrano, M.T., and O'Connor, M.P. 2012. Air-filled postcranial bones in theropod dinosaurs: physiological implications and the 'reptile'-bird transition. *Biological Reviews*, 87:168-193.
- Brainerd, E.L., Baier, D.B., Gatesy, S.M., Hedrick, T.L., Metzger, K.A., Gilbert, S.L., and Crisco, J.J. 2010. X-ray Reconstruction of Moving Morphology (XROMM): precision, accuracy and applications in comparative biomechanics research. *Journal of Experimental Zoology*, 313A:262-279.
- Britt, B.B. 1993. Pneumatic postcranial bones in dinosaurs and other archosaurs. PhD thesis. University of Calgary, Alberta.
- Brochu, C.A. 2003. Osteology of *Tyrannosaurus rex*: insights from a nearly complete skeleton and high-resolution computed tomographic analysis of the cranium. *Journal of Vertebrate Paleontology*, 24(Supplement to 4):1-138.
- Brusatte, S.L. and Sereno, P.C. 2007. Phylogeny of Allosauroidea (Dinosauria: Theropoda): comparative analysis and resolution. *Journal of Systematic Palaeontology*, 6:155-182.



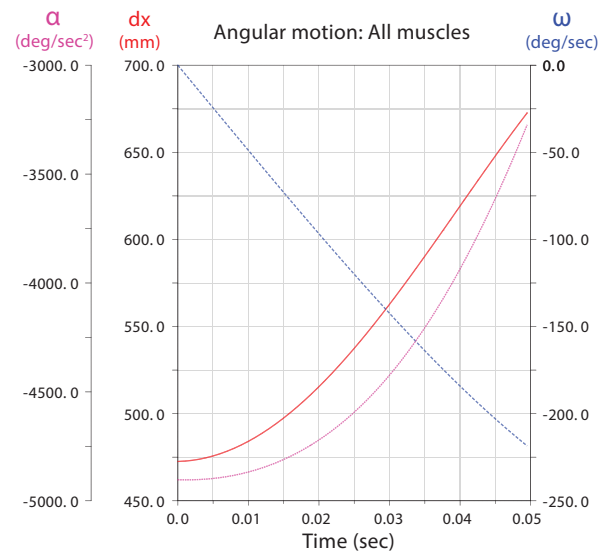
**FIGURE 13.** Ventroflexion simulated on the skull of *Allosaurus* (MOR 693). The rows indicate simulation time. The columns are for the initial position of each simulation, endpoints for gravity acting alone, m. longissimus capitis superficialis acting alone, and for all ventroflexors acting together. The coordinate axes (lower left) are as in Table 3, for x (transverse), y (dorsoventral), and z (anteroposterior) directions; movement about these axes are for pitch (simulated here), yaw, and roll, respectively. The white arrows indicate displacement magnitudes of the tip of the snout from the initial position in the x direction. Muscles are modeled as line-of-sight tensile forces (thin red lines) from origin to insertion.

- Carrano, M.T., Benson, R.B.J., and Sampson, S.D. 2012. The phylogeny of Tetanurae (Dinosauria: Theropoda). *Journal of Systematic Palaeontology*, 10:211-300.
- Chure, D.J. 2000. A new species of *Allosaurus* from the Morrison Formation of Dinosaur National Monument (UT-CO) and a revision of the theropod family Allosauridae. PhD thesis, Columbia University, New York City, New York, USA.
- Cowin, S.C. 2001. *Bone Mechanics Handbook, Second Edition*. CRC Press, Boca Raton.
- Curtis, N., Jones, M.E.H., Evans, S.E., O'Higgins, P., and Fagan, M.J. 2009. Visualising muscle anatomy using three-dimensional computer models - an example using the head and neck muscles of *Sphenodon*. *Palaeontologica Electronica*, 12,7T: 18p, [http://palaeo-electronica.org/2009\\_3/194/index.html](http://palaeo-electronica.org/2009_3/194/index.html)
- Curtis, N., Jones, M.E.H., Evans, S.E., O'Higgins, P., and Fagan, M.J. 2010a. Predicting muscle activation patterns from motion and anatomy: modelling the skull of *Sphenodon* (Diapsida: Rhynchocephalia). *Journal of the Royal Society Interface*, 7:153-160.
- Curtis, N., Jones, M.E.H., Lappin, A.K., Evans, S.E., O'Higgins, P., and Fagan, M.J. 2010b. Comparison between in vivo and theoretical bite performance: using multi-body modelling to predict muscle and bite forces in a reptile skull. *Journal of Biomechanics*, 43:2804-2809.
- Curtis, N., Kupczik, K., O'Higgins, P., Moazen, M., and Fagan, M.J. 2008. Predicting skull loading: applying multibody dynamics analysis to a macaque skull. *Anatomical Record*, 291:491-501.
- D'Amore, D.C., Moreno, K., McHenry, C.R., and Wroe, S. 2011. The effects of biting and pulling on the forces generated during feeding in the Komodo Dragon (*Varanus komodoensis*). *PLoS ONE*, 6(10):e26226.
- Delp, S.L. and Loan, J.P. 1995. A graphics-based software system to develop and analyze models of musculoskeletal structures. *Computers in Biology and Medicine*, 25:21-34.
- Domire, Z.J. and Challis, J.H. 2010. A critical examination of the maximum velocity of shortening used in simulation models of human movement. *Computer Methods in Biomechanics and Biomedical Engineering*, 13:693-699

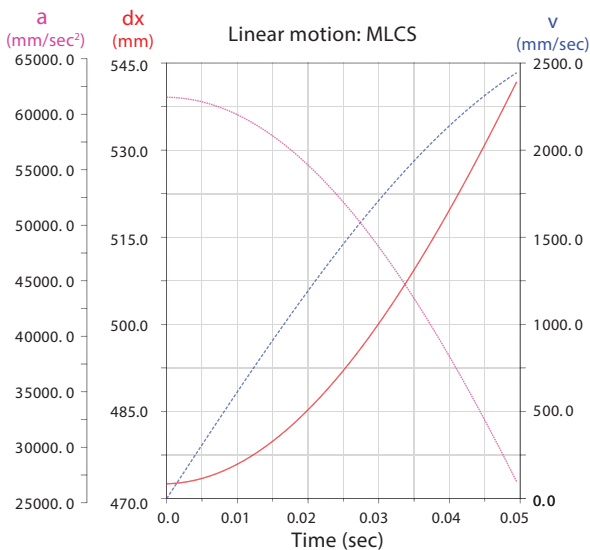
## 14.1



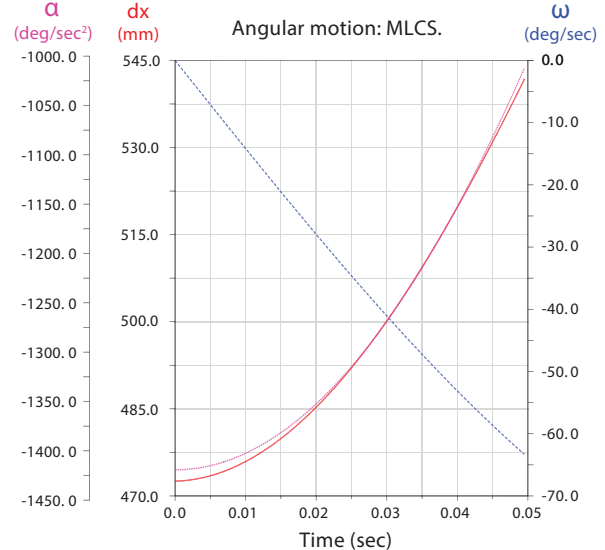
## 14.2



## 14.3



## 14.4

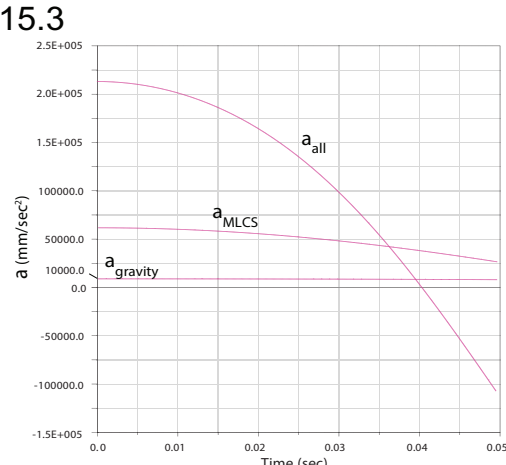
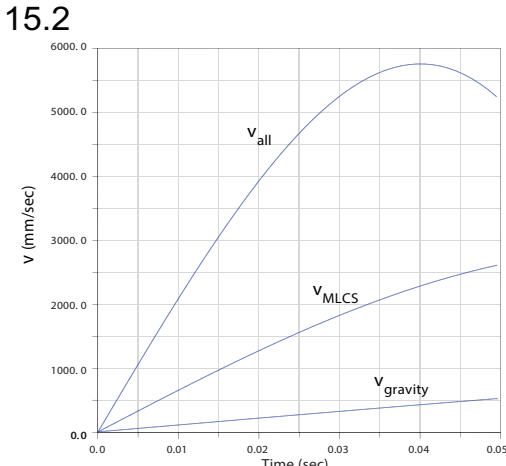
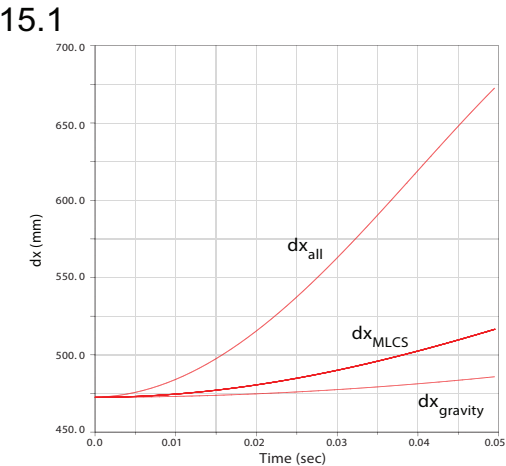


**FIGURE 14.** Ventroflexive movement of the anterior tip of the cranium of *Allosaurus*, plotted against time and including the point's vertical position ( $dx$ ). 1 and 2 plot linear ( $a_{cm}$ ,  $v_{cm}$ ) and angular ( $\alpha_{cm}$ ,  $\omega_{cm}$ ) accelerations and velocities with all ventroflexors activated. 3 and 4 plot the same quantities with contraction of *m. longissimus capitis superficialis* (MLCS).

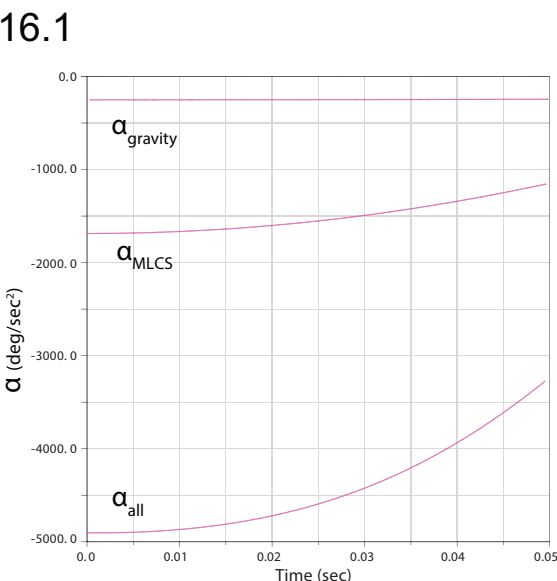
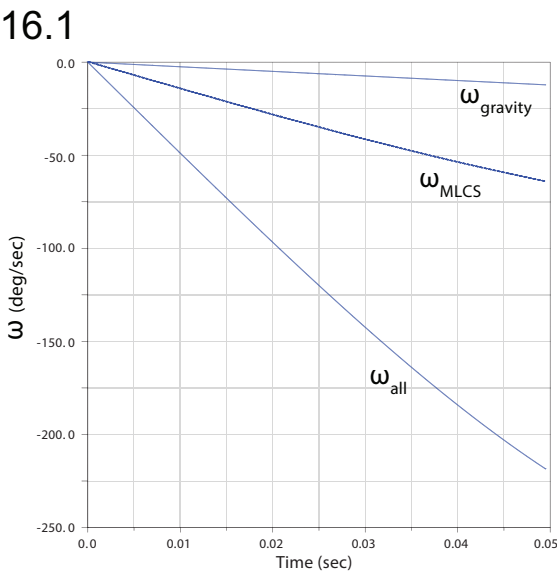
- Dufeu, D.L. 2011. The evolution of cranial pneumaticity in Archosauria: patterns of paratympanic sinus development. PhD Thesis. Ohio University.
- Dumont, E.R. 2010. Bone density and the lightweight skeletons of birds. *Proceedings of the Royal Society B: Biological Sciences*, 277:2193-2198.
- Foster, J. 2007. *Jurassic West*. Indiana University Press, Bloomington.
- Fowler, M.E. 1991. Comparative clinical anatomy of ratites. *Journal of Zoo and Wildlife Medicine*, 22:204-227.

- Gordon, A.M., Huxley, A.F., and Julian, F.J. 1966. The variation in isometric tension with sarcomere length in vertebrate muscle fibres. *Journal of Physiology*, 184:170-192.
- Henderson, D.M. 1999. Estimating the masses and centers of mass of extinct animals by 3-D mathematical slicing. *Paleobiology*, 25:88-106.
- Hinds, D.S. and Calder, W.A. 1971. Dead air space in the respiration of birds. *Evolution*, 25:429-440.

- Holtz, T.R., Jr., Molnar, R.E. and Currie, P.J. 2004. Basal Tetanurae, p. 71-110. In Weishampel, D.B., Dodson, P., and Osmolska H. (eds.), *The Dinosauria, 2nd edition*. Berkeley: University of California Press.
- Loewen, M.A. 2009. Variation in the Late Jurassic theropod dinosaur *Allosaurus*: ontogenetic, functional, and taxonomic implications PhD thesis, University of Utah, Salt Lake City, Utah, USA.
- Madsen, J.H., Jr. 1976. *Allosaurus fragilis*: a revised osteology. *Bulletin 209, Utah Geological Survey*.
- Mallison, H. 2007. Virtual Dinosaurs - Developing Computer Aided Design and Computer Aided Engineering Modeling Methods for Vertebrate Paleontology. Ph.D. dissertation. Eberhard-Karls-Universität, Tübingen. <http://tobias-lib.ub.uni-tuebingen.de/volltexte/2007/2868/>
- Mallison, H. 2010. The digital *Plateosaurus* I: body mass, mass distribution and posture assessed using CAD and CAE on a digitally mounted complete skeleton. *Palaeontologica Electronica*, 13(2) 8A:26p. [palaeo-electronica.org/2010\\_2/198/index.html](http://palaeo-electronica.org/2010_2/198/index.html)
- Marin, F., Hoang, N., Aufaure, P., and Ho Ba Tho, M.-C. 2010. In vivo intersegmental motion of the cervical spine using an inverse kinematics procedure. *Clinical Biomechanics*, 25:389-396.
- Miller, R.H., Umberger, B.R., and Caldwell G.E. 2012. Sensitivity of maximum sprinting speed to characteristic parameters of the muscle force-velocity relationship. *Journal of Biomechanics*, 45:1406-1413.
- Moazen, M., Curtis, N., Evans, S.E., O'Higgins, P., and Fagan, M.J. 2008a. Rigid-body analysis of a lizard skull: Modelling the skull of *Uromastix hardwickii*. *Journal of Biomechanics*, 41: 1274-1280.
- Moazen, M., Curtis, N., Evans, S.E., O'Higgins, P., and Fagan, M.J. 2008b. Combined finite element and multibody dynamics analysis of biting in a *Uromastix hardwickii* lizard skull. *Journal of Anatomy*, 213:499-508.
- Motani, R. 2001. Estimating body mass from silhouettes: testing the assumption of elliptical body cross sections. *Paleobiology*, 27:735-750.
- O'Brien, T.D., Reeves, N.D., Baltzopoulos, V., Jones, D.A., and Maganaris, C.N. 2010. In vivo measurements of muscle specific tension in adults and children. *Experimental Physiology*, 95: 202-210.
- O'Connor, P.M. 2004. Pulmonary pneumaticity in the postcranial skeleton of extant Aves: a case study examining Anseriformes. *Journal of Morphology*, 261:141-161.
- O'Connor, M. P. 2006. Postcranial pneumaticity: An evaluation of soft-tissue influences on the postcranial skeleton and the reconstruction of pulmonary anatomy in archosaurs. *Journal of Morphology*, 267:1199-1226.
- Otten, E. 1987. A myocybernetic model of the jaw system of the rat. *Journal of Neuroscience Methods*, 21:287-302.
- Rayfield, E.J., Norman, D.B., Horner, C.C., Horner, J.R., Smith, P.M., Thomason, J.J., and Upchurch, P. 2001. Cranial design and function in a large theropod dinosaur. *Nature*, 409:1033-1037.
- Samman, T. 2006. Craniocervical functional morphology of several North American coelurosaurian dinosaurs. Unpublished PhD thesis, University of Calgary, Calgary, Alberta, Canada.
- Samman, T. In press. Tyrannosaurid craniocervical mobility: a preliminary assessment. In Parrish, J.M., Molnar, R.E., Currie, P.J., and Koppelhus, E.B. (eds.), *Tyrannosaurid Paleobiology*. Indiana University Press, Bloomington.
- Sellers, W.I., Manning, P.L., Lyson, T., Stevens, K., and Margetts, L., 2009. Virtual palaeontology: gait reconstruction of extinct vertebrates using high performance computing. *Palaeontologia Electronica* Vol. 12, Issue 3; 11A: 26p; [http://palaeo-electronica.org/2009\\_3/180/index.html](http://palaeo-electronica.org/2009_3/180/index.html)
- Snively, E. 2006. Neck musculoskeletal function in the Tyrannosauridae (Theropoda, Coelurosauria): implications for feeding dynamics. Unpublished PhD thesis, University of Calgary, Calgary, Alberta, Canada.
- Snively, E. 2012. Rigid body mechanics of prey capture in large carnivorous dinosaurs. Unpublished M.Sc. thesis, Ohio University, Athens, Ohio, USA.
- Snively, E. and Russell A.P. 2007a. Functional variation of neck muscles and their relation to feeding style in Tyrannosauridae and other large theropods. *Anatomical Record*, 290:934-957.
- Snively, E. and Russell, A.P. 2007b. Craniocervical feeding dynamics of *Tyrannosaurus rex*. *Paleobiology*, 33:610-638.
- Snively, E. and Russell, A.P. 2007c. Functional morphology of neck musculature in the Tyrannosauridae (Dinosauria, Theropoda) as determined via a hierarchical inferential approach. *Zoological Journal of the Linnean Society*, 151:759-808.
- Snively, E., Henderson, D.M., and Phillips, D.S. 2006. Fused and vaulted nasals of tyrannosaurid dinosaurs: Implications for cranial strength and feeding mechanics. *Acta Palaeontologica Polonica*, 51:435-454.
- Stevens, K.A. and Parrish, J.M. 1998. Neck posture and feeding habits of two Jurassic sauropod dinosaurs. *Science*, 294:798-800.
- Stevens, K.A. and Parrish, J.M. 2005a. Digital Reconstructions of Sauropod Dinosaurs and Implications for Feeding, p. 178-200. In Rogers, K.A.C. and Wilson, J.A. (eds.), *Sauropods: Evolution and Paleobiology*. University of California Press, Berkeley.
- Stevens, K.A. and Parrish, J.M. 2005b. Neck posture, dentition, and feeding strategies in Jurassic sauropod dinosaurs, p. 212-232. In Tidwell, V. and Carpenter, K. (eds.), *Thunder-Lizards: The Sauropodomorph Dinosaurs*. Indiana University Press, Bloomington.

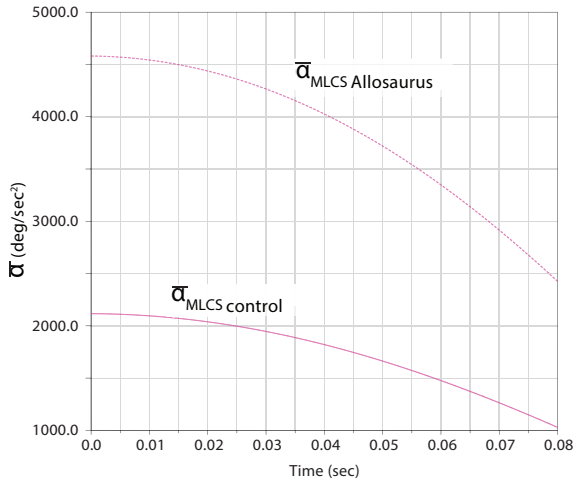


**FIGURE 15.** Linear displacements  $dx$  (1), velocities  $v$  (2), and accelerations  $a$  (3) of a point at the anterior tip of the premaxilla of *Allosaurus*. Subscripts refer to simulations with gravity alone, all ventroflexors (all), and just m. longissimus capitis superficialis (MLCS).

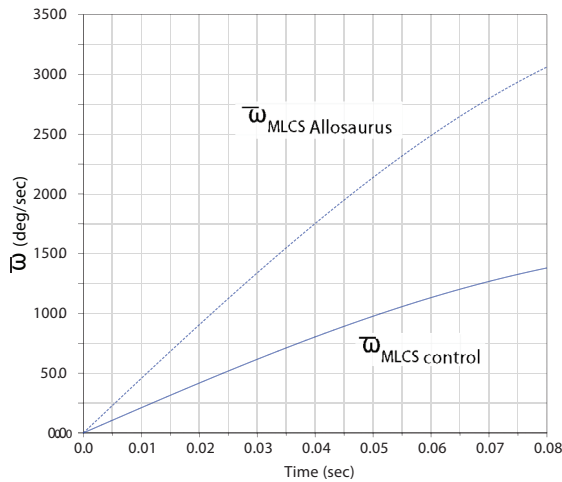


**FIGURE 16.** Comparison of angular velocities  $\omega$  (1) and accelerations  $\alpha$  (2) for ventroflexion simulations with gravity only, gravity plus m. longissimus capitis superficialis (MLCS), and all ventroflexors (all) active.

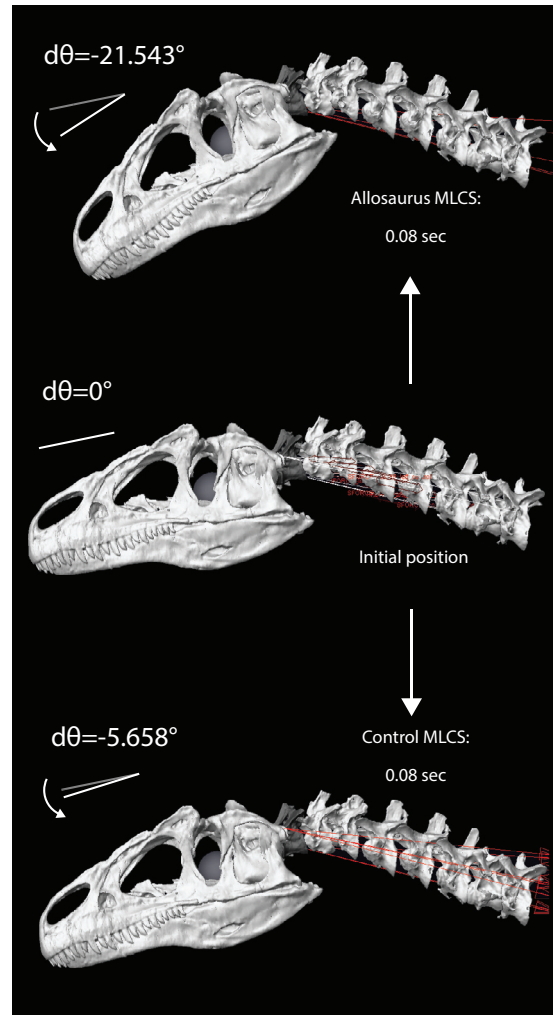
17.1



17.2



17.3



**FIGURE 17.** Comparison of ventroflexive angular accelerations  $\bar{\alpha}$  (1), velocities  $\bar{\omega}$  (2), and displacements  $d\theta$  (3), for two different reconstructions of *m. longissimus capitis superficialis* (MLCS). Absolute values of  $\bar{\alpha}$  and  $\bar{\omega}$  enable comparisons of relative magnitudes. The ventral insertion of the muscle in of *Allosaurus* imparts over twice the  $\bar{\alpha}$  (and torque) of the control throughout the 0.08 sec of the simulation (1), and reaches 3.8 times the angular displacement (3).

Tambussi, C.P., de Mendoza, R., Degrange, F.J., and Picasso, M.B. 2012. Flexibility along the neck of the Neogene terror bird *Andalgalornis steulleti* (Aves Phorusrhacidae). *PLoS ONE*, 7(5): e37701.

Tsuihiji, T. 2005. Homologies of the transversospinalis muscles in the anterior presacral region of Sauria (crown Diapsida). *Journal of Morphology*, 263:151-178.

Tsuihiji, T. 2007. Homologies of the longissimus, iliocostalis, and hypaxial muscles in the anterior presacral region of extant Diapsida. *Journal of Morphology*, 268:986-1020.

Tsuihiji, T. 2010. Reconstructions of the axial muscle insertions in the occipital region of dinosaurs: evaluations of past hypotheses on Marginocephalia and Tyrannosauridae using the Extant Phylogenetic Bracket approach. *Anatomical Record*, 293:1360-1386.

van Lopik, D.W. and Acar, M. 2007. Development of a multi-body computational model of human head and neck. *Proceedings of the Institution of Mechanical Engineers Part K-Journal of Multi-Body Dynamics*, 221 Part K:175-197.

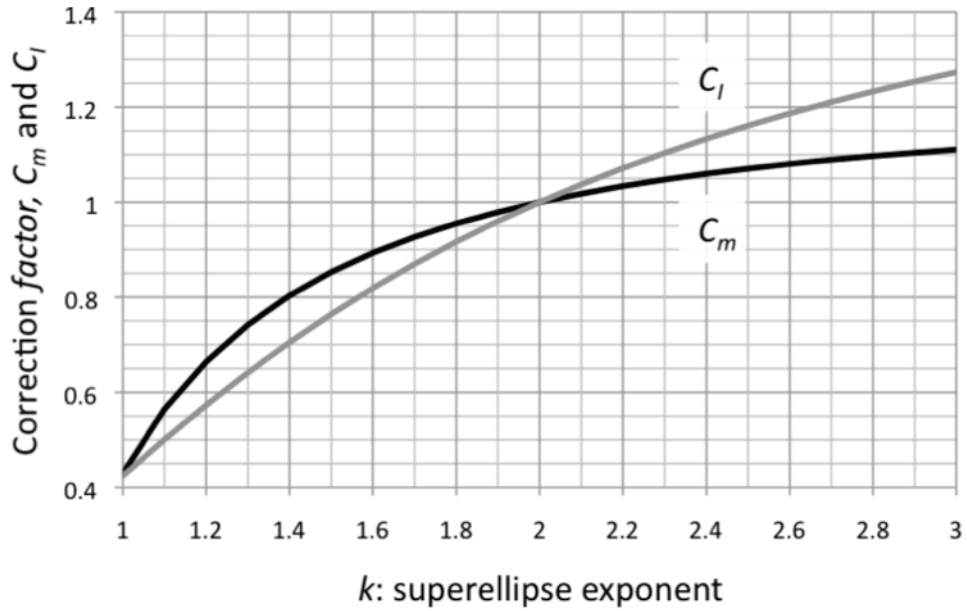


- van Ruijven, L.J. and Weijs, W.A. 1990. A new model for calculating muscle forces from electromyograms. *European Journal of Applied Physiology*, 61:479-485.
- Vasavada, A.N., Danaraj, J., and Siegmund, G.P. 2008a. Head and neck anthropometry, vertebral geometry and neck strength in height-matched men and women. *Journal of Biomechanics*, 41: 114-121.
- Vasavada, A.N., Li, S., and Delp S.L. 1998. Influence of muscle morphometry and moment arms on the moment-generating capacity of human neck muscles. *Spine*, 23: 412-422.
- Vasavada, A.N., Lasher, R.A., Meyer, T.E., and Lin, D.C. 2008b. Defining and evaluating wrapping surfaces for MRI-derived spinal muscle paths. *Journal of Biomechanics*, 41:1450-1457.
- Wedel, M.J. 2005. Postcranial skeletal pneumaticity in sauropods and its implications for mass estimates. pp. 201-228. In Wilson, J.A. and Curry-Rogers, K. (eds.), *The Sauropods: Evolution and Paleobiology*. University of California Press, Berkeley.
- Westneat, M.W. 2003. A biomechanical model for analysis of muscle force, power output and lower jaw motion in fishes. *Journal of Theoretical Biology*, 223:269-281.
- Winters, T.M., Takahashi, M., Leiber, R.L., and Ward, S.R. 2011. Whole muscle length-tension relationships are accurately modeled as scaled sarcomeres in rabbit hindlimb muscles. *Journal of Biomechanics*, 44:109-115.
- Witmer, L.M. 1997. The evolution of the antorbital cavity of archosaurs: a study in soft-tissue reconstruction in the fossil record with an analysis of the function of pneumaticity. *Journal of Vertebrate Paleontology*, 17(Supplement to 1): 1-73.
- Witmer, L.M. and Ridgely, R.C. 2008. The paranasal air sinuses of predatory and armored dinosaurs (Archosauria: Theropoda and Ankylosauria) and their contribution to cephalic structure. *Anatomical Record*, 291:1362-1388.

APPENDIX 1.

**FIGURE A1.** Plot of superellipse exponents  $k$  (x-axis) against superellipse correction factors  $C_m$  (cross-sectional areas, mass, and the contribution of a frustrum's point mass to  $I$  of an entire body) and  $C_I$  (for an individual

frustrum's  $I$ ) relative to an ellipse (y-axis). The polynomials enable area calculations with exponents of greater than one significant figure (Table A1).



For calculation if  $1 < k < 3$

**Mass:**  $C_m = -0.1125k^4 + 1.0603k^3 - 3.7754k^2 + 6.1538k - 2.8891$

**Moment of inertia:**  $C_I = 0.0369k^3 - 0.373k^2 + 1.4372k - 0.6775$

**TABLE A1.** Superellipse exponents ( $k$ ) and coefficients for determining mass ( $C_{\text{mass}}$ ) and mass moment of inertia ( $C_I$ ) relative to these quantities for an elliptical frustrum ( $k=2.0$ ).  $C_{\text{mass}}$  is for conversion of both mass and the contribution of a frustrum's point mass to  $I$  of a body part from its center of rotation.  $C_I$  is for conversions of  $I_{x,y,z}$  for any individual frustrum. The inverse of a coefficient gives mass or  $I$  for an ellipse if the quantity is known for a shape with another exponent  $k$ .

Exponent $k$	Superellipse:	Superellipse:
	$C_{\text{mass}}$	$C_I$
1	0.4292	0.4244
1.1	0.5644	0.5006
1.2	0.6641	0.5731
1.3	0.7417	0.6412
1.4	0.8032	0.7048
1.5	0.8527	0.7639
1.6	0.8931	0.8188
1.7	0.9265	0.8695
1.8	0.9551	0.9164
1.9	0.9789	0.9598
2	1.0000	1.0000
2.1	1.0177	1.0372
2.2	1.0338	1.0716
2.3	1.0475	1.1036
2.4	1.0599	1.1333
2.5	1.0705	1.1609
2.6	1.0805	1.1866
2.7	1.0894	1.2105
2.8	1.0972	1.2328
2.9	1.1041	1.2537
3	1.1108	1.2732

**APPENDIX 2. DERIVATION OF MASS MOMENT OF INERTIA / FOR SUPER-ELLIPTICAL FRUSTRA**

Solid Edge and other modeling software calculate inertial properties (mass, center of mass, and mass moment of inertia). The geometry for these properties will be especially accurate with NURBs ellipsoids deformed to drape over a skeleton (Mallison, 2010, 2011), for example, as in an animal's thoracic region. For a model with non-deformed ellipsoid cross sections, it is useful to estimate how differing cross-sectional shapes would affect mass  $m$  and mass moments of inertia  $I$  about orthogonal axes.

Symmetrical, curved cross sections, called superellipses, have shapes described by equation (5).

5)

$$|x/a|^k + |y/b|^k = 1$$

Here,  $x$  and  $y$  are variables,  $a$  and  $b$  are semi-major and semi-minor axes, and exponent  $k$  governs the shape's curvature. In an ellipse,  $k=2$ .

For an object with superelliptical cross sections, the following equation gives mass moment of inertia about a vertical axis  $y$ , with  $n$  segments (each  $i$ ), and radii from dorsal to ventral ( $DV$ ) and lateral to medial ( $LM$ ).

6)

$$I_y = \sum_{i=1}^n \{ C_i \rho_i l_i \bar{r}_{DV} \bar{r}_{LM}^3 + m_i r_i^2 \}$$

A given segment's density is  $\rho_i$ , its length is  $l_i$ , and  $\bar{r}_{DV}$  and  $\bar{r}_{LM}$  are respective averages of dorso-ventral and mediolateral radii of the segment's anterior and posterior faces. The distance  $r_i$  is the radius from the center of rotation of a body to the center of mass  $m_i$  of segment  $i$ . Critically,  $C$  is a unique constant for a given superelliptical cross section of exponent  $k$  from equation 5 (as long as  $k$  is the same for front and back cross sections).

$F_{max}$  for a superellipse, and hence for  $I$  and  $m$  for objects with superelliptical sections, can be calculated using exponent  $k$ . Mosen (2009) provides a general equation for  $F_{max}$  (although not for  $I$  or  $m$ ), using the inverse of  $k$ . The equation becomes simpler when  $k$  is calculated and substituted algebraically.

7)

$$C = \frac{1}{k} B\left(\frac{3}{k}, \frac{1}{k}\right)$$

$B$  is a beta function incorporating gamma functions defined as

$$B\left(\frac{3}{k}, \frac{1}{k}\right) = \frac{\Gamma\left(\frac{3}{k}\right)\Gamma\left(\frac{1}{k}\right)}{\Gamma\left(\frac{3}{k} + \frac{1}{k}\right)}$$

8)

Substituting all terms and expanding equation 3, we obtain mass moment of inertia of an individual superellipse-based frustrum  $i$  about a vertical axis.

$$9) I_{yi} = \frac{1}{k} \frac{\Gamma\left(\frac{3}{k}\right)\Gamma\left(\frac{1}{k}\right)}{\Gamma\left(\frac{3}{k} + \frac{1}{k}\right)} \rho_i l_i \bar{r}_{DV} \bar{r}_{LM}^3$$

Mass and  $I_y$  vary predicably with the exponent used to define each superellipse cross section, and can be calculated by multiplying the ellipse values by a correction factor. Table A1 presents correction factors for superellipse-section frustra of varying exponents  $k$ , including that of an ellipse ( $k=2$ ). Figure A1 plots these coefficients, and fitted polynomials that enable calculation of areas with exponents of higher significant figures. Common cross-sectional shapes for terrestrial vertebrates, with exponents of 2.3–2.5 (Motani 2001), result in masses 5–7% greater than for elliptical cross sections. This discrepancy supports Motani's (2001) findings that elliptical cross sections substantially underestimate body volume.  $I_y$  of individual frustra increase more rapidly than mass as exponents exceed  $k=2$ , from 10–16% greater as  $k$  ranges from 2.3 to 2.5.

**APPENDIX 3. CONGRUENT AXES FOR JOINT MARKERS IN MSC ADAMS.**

Joint markers on different bodies in Adams must be coincident. Aligning their positions, coordinate axes and axis orientations requires four steps.

1. Right-click on the joint and obtain "Info". This dialog box identifies the *i* and *j* markers.
2. Copy the angles of the *i* marker's global axis orientation.
3. Right-click the *j* marker, and select "Modify".
4. Paste the *i* marker's angles in place of the listed *j* marker's.