



**There is a lot of change going on throughout Public Services and Procurement Canada (PSPC)...**

**Optimizing**







**We're improving how we  
work to better serve  
Government and Canadians**

MINING

**We're changing our workplace,  
making it more modern**





# We're updating our tools:



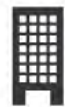
**New technology**



**New systems**



**New partnerships**



**New ways of working**



**Here are a few examples  
of the initiatives and  
projects happening now:**



# GCDOCS

(Government-Wide and PSPC-Internal)

*... will make storing, finding  
and sharing documents easier.*



# **Workplace Renewal Initiative**

*... will modernize our  
work environment.*





# **Mental Health Strategy & Wellness Dashboard**

*... will provide a broad level of  
support to employees through  
education, tools and guidance.*



**Want to know more about these changes?**

The background features a series of light blue, stylized lines and shapes that resemble a circuit board or a network diagram. There are several parallel lines, some with right-angle turns, and a few rectangular blocks. A solid blue circle is located in the upper left quadrant. The overall aesthetic is clean and technical.

**When are they happening?**

The background features a light blue, abstract geometric pattern. It consists of several horizontal and vertical lines of varying lengths, some of which are connected by diagonal lines, creating a sense of depth and movement. There are also some circular and rectangular shapes scattered throughout, all rendered in a soft, muted blue color.

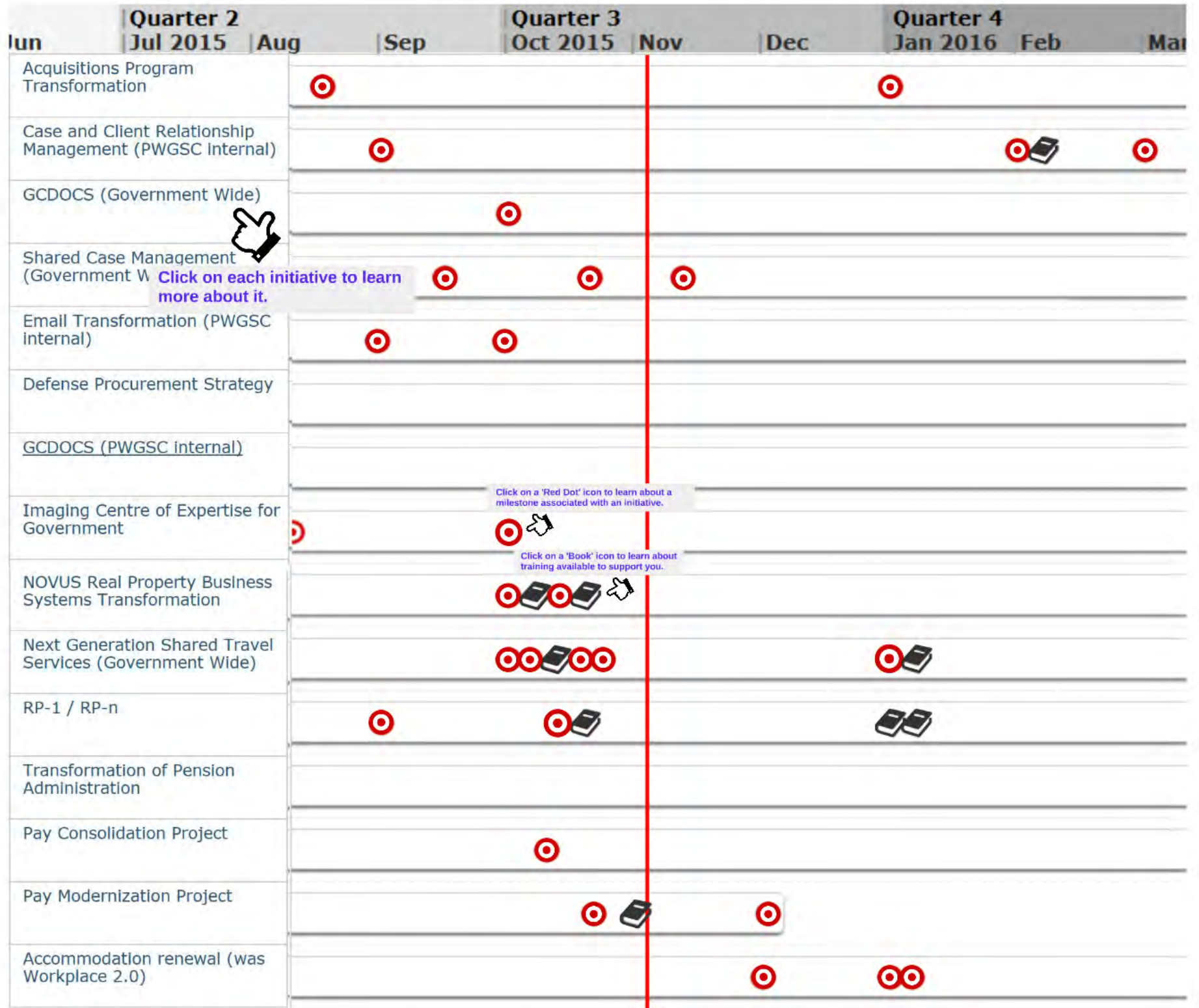
**How will you be impacted?**





**How will you be supported?**





Click on each initiative to learn more about it.

Click on a 'Red Dot' icon to learn about a milestone associated with an initiative.

Click on a 'Book' icon to learn about training available to support you.

Pay Modernization Project	
Accommodation renewal (was Workplace 2.0)	

**The TIMELINE TOOL  
lists all of the current  
initiatives...**



*.... organized by their type:*

**Transformation**

**OR**

**Blueprint 2020**

**... and the degree to which they will change the way you do your work:**

**Significant changes**

**Some changes**

**Minimal changes**

**No changes**

*Plus, it's*

**interactive**

**& easy**



*to use*

# At the top, you will see buttons:

Home

Accessible

Report

Subscribe

Feedback



Return to the Timeline home


View an accessible version

Select initiatives and print a report

Subscribe to receive email updates on select initiatives

Leave a comment





**The Timeline Tool  
interface includes  
additional interactive  
features:**

DCS (Government Wide)



ed Case Management  
ernment W

**Click on each initiative to learn more about it.**

l Transformation (PWGSC  
nal)

se Procurement Strategy

DCS (PWGSC internal)



Click on a 'Red Dot' icon to learn about a milestone associated with an initiative.



Click on a 'Book' icon to learn about training available to support you.



The background features several thin, light purple lines that form a network of paths and shapes. A prominent dark purple arrow points to the right in the lower-left quadrant. On the right side, there are dark grey geometric shapes, including a square and a triangle, partially visible.

**We know that change is not always easy...**

**roducing the**

The background features several thin, light purple lines that form a series of parallel, slightly offset horizontal paths. These lines are interrupted by diagonal segments, creating a sense of depth and movement. A solid purple arrow points to the right, positioned below the main text. Below the arrow, there is a solid purple circle. The overall aesthetic is clean and modern, with a focus on geometric forms and a consistent color palette of purple and white.

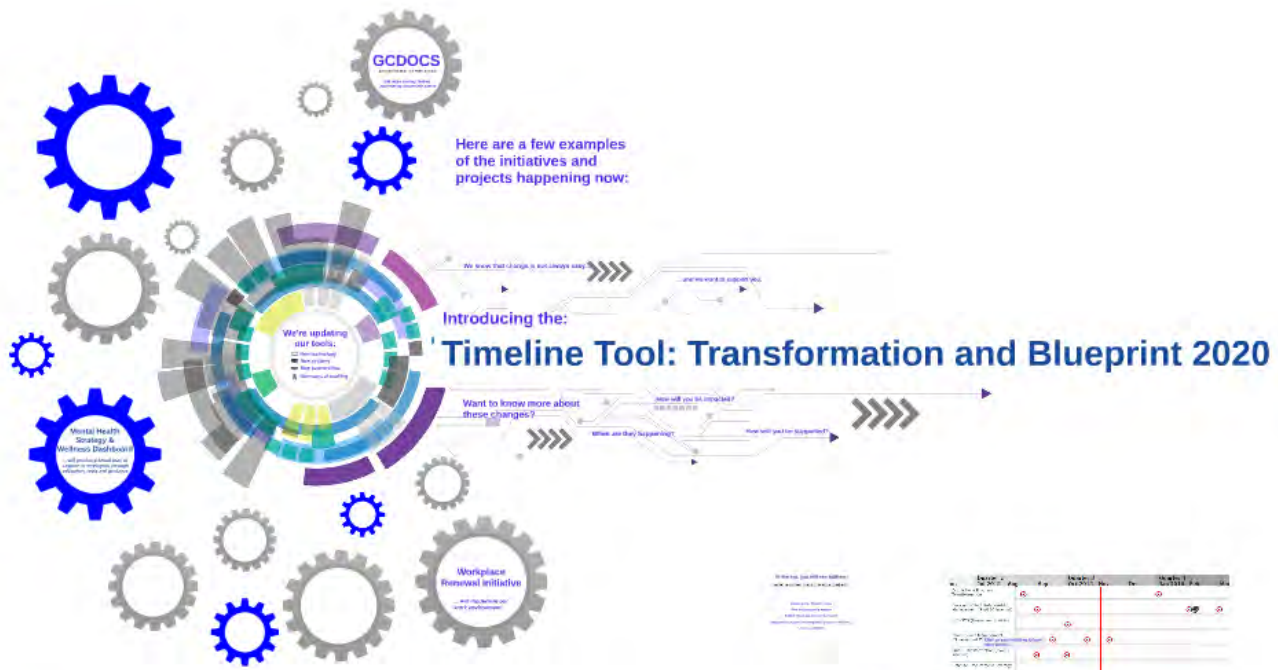
**... and we want to support you.**



**PSPC is evolving in  
such exciting ways...**

**... but we can't do it without you!**





Here are a few examples of the initiatives and projects happening now:

## Introducing the: Timeline Tool: Transformation and Blueprint 2020

Want to know more about these changes?

Timeline Tool: Transformation and Blueprint 2020

Initiative	Start	End	Status
Workplace Renewal Initiative	2020-01-01	2020-12-31	Active
Mental Health Strategy & Wellness Dashboard	2020-03-01	2020-09-30	Completed
GCDOS	2020-01-01	2020-06-30	Completed
Transformation and Blueprint 2020	2020-01-01	2020-12-31	Active

The **TIMELINE TOOL** lists all of the current initiatives...

Transformation or Blueprint 2020

High Performance and Client-Focused Public Service



... and the entire Public Service!

PSPC is evolving in such exciting ways...  
 ... but we can't do it without you!

# Your help is essential to our success.