

Reported cases of notifiable STI¹ from January 1 to June 30, 2007 and
January 1 to June 30, 2008 and corresponding annual rates for the years
2007 and 2008²

Surveillance and Epidemiology Section
Community Acquired Infections Division
Centre for Communicable Diseases and Infection Control
Public Health Agency of Canada

Province / Territory	Genital Chlamydia			
	Cases: January 1 to June 30		Rates: January 1 to December 31	
	2007	2008	2007 Actual Annual Rate ³	2008 Projected Annual Rate ⁴
National	36100	39455	217.3	239.3
NL	280	275	99.4	108.6
PE	76	107	124.1	154.4
NS	867	887	175.6	189.9
NB	634	646	158.3	172.3
QC	6579	7250	173.5	188.3
ON	11554	12500	180.6	195.3
MB ⁵	2304	3493	473.9	588.7
SK	2127	2292	433.3	459.8
AB	5608	5714	322.2	329.0
BC	4996	5212	229.6	238.0
YT	108	115	703.5	742.2
NT	348	354	1763.7	1660.5
NU	619	610	1989.5	1960.6

Province / Territory	Gonorrhoea			
	Cases: January 1 to June 30		Rates: January 1 to December 31	
	2007	2008	2007 Actual Annual Rate ³	2008 Projected Annual Rate ⁴
National	5553	6230	34.9	37.8
NL	5	9	3.8	3.6
PE	1	0	2.2	0.0
NS	27	54	6.7	11.6
NB	13	16	4.8	4.3
QC	672	800	18.2	20.8
ON	1949	1928	30.6	30.1
MB ⁵	647	774	125.1	130.4
SK	452	676	101.9	135.6
AB	1041	1031	63.1	59.4
BC	592	626	29.3	28.6
YT	7	6	48.4	38.7
NT	114	127	518.3	595.7
NU	33	183	106.1	588.2

Province / Territory	Infectious Syphilis ⁶			
	Cases: January 1 to June 30		Rates: January 1 to December 31	
	2007	2008	2007 Actual Annual Rate ³	2008 Projected Annual Rate ⁴
National	628	652	3.6	4.0
NL	0	3	0.4	1.2
PE	0	0	0.7	0.0
NS	0	1	0.1	0.2
NB	2	1	0.3	0.3
QC	112	161	3.0	4.2
ON	200	184	2.8	2.9
MB	16	3	2.3	0.5
SK	5	3	2.7	0.6
AB	131	91	7.2	5.2
BC	162	202	6.8	9.2
YT	0	0	0.0	0.0
NT	0	3	0.0	14.1
NU	0	0	0.0	0.0

¹ The term STI (Sexually Transmitted Infection) is now commonly used in place of STD (Sexually Transmitted Disease). STI is more encompassing, including infections that may be asymptomatic.

² Data are preliminary and expected to change: 2008 data are expected to change more than 2007 data.

³ Rate (per 100,000) based on all reported cases for 2007. Population estimates provided by Statistics Canada. (Source: Statistics Canada, Demography Division, Demographic Estimates Section, July Population Estimates, 2007 preliminary postcensal estimates).

⁴ Rate for 2008 is calculated by projecting the cumulative number of cases reported between January 1 and June 30 and then calculating the rate (per 100,000). Population estimates provided by Statistics Canada. (Source: Statistics Canada, Demography Division, Demographic Estimates Section, July Population Estimates, 2007 preliminary postcensal estimates). No adjustment has been made for seasonal variability.

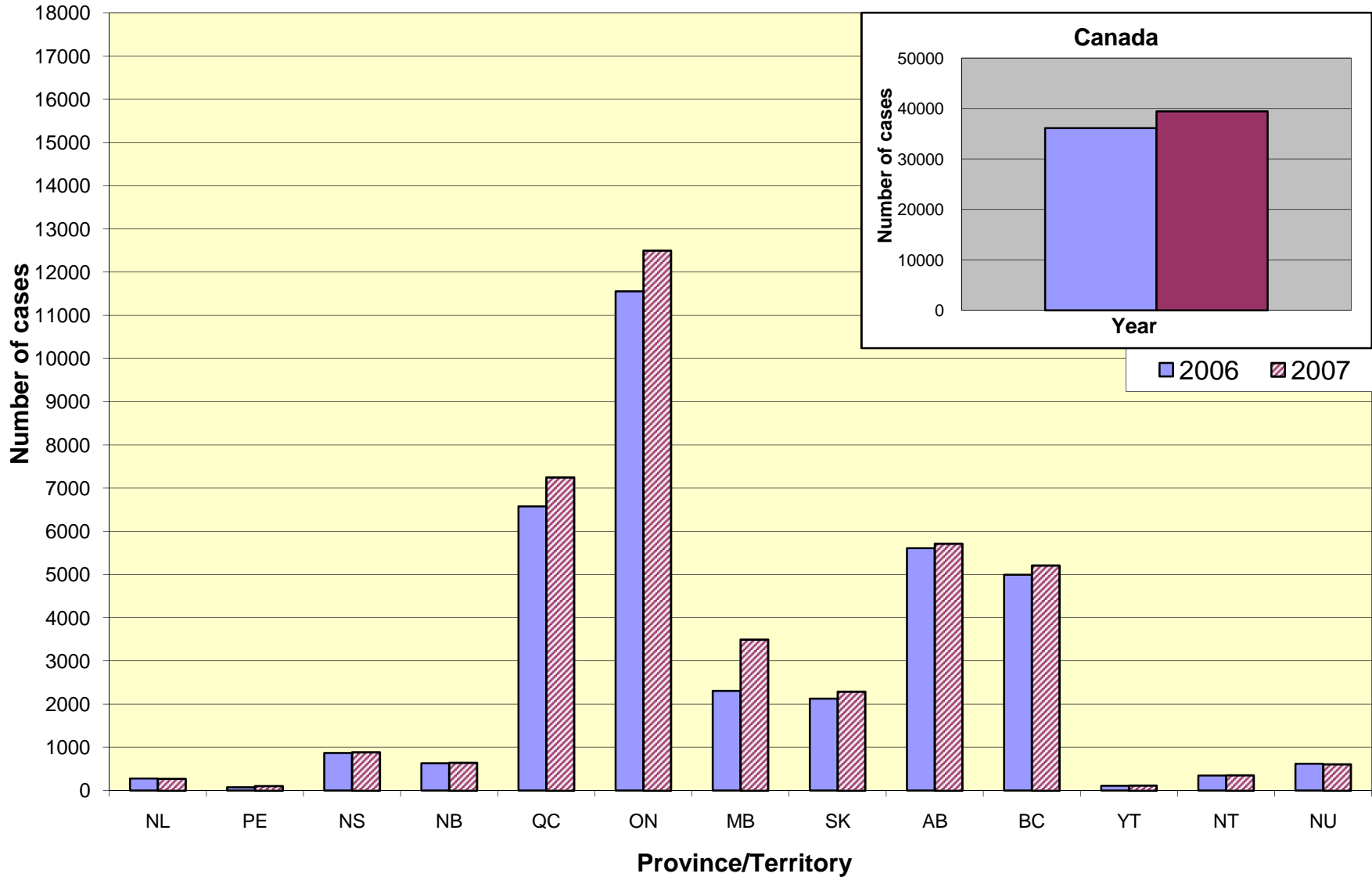
⁵ Prior to June 2007, Cadham Provincial Laboratory used a non-amplified nucleic acid test for swab specimens and a nucleic acid amplified test (NAAT) for urine specimens to test for chlamydia and gonorrhoea. From late June 2007 to September 2007, a new NAAT assay was phased in for swab and urine specimens. The spike in the proportion of tests positive for *Chlamydia trachomatis* observed during this time is consistent with the sensitivity and specificity of the new test.

⁶ Infectious syphilis: primary, secondary and early latent stages.

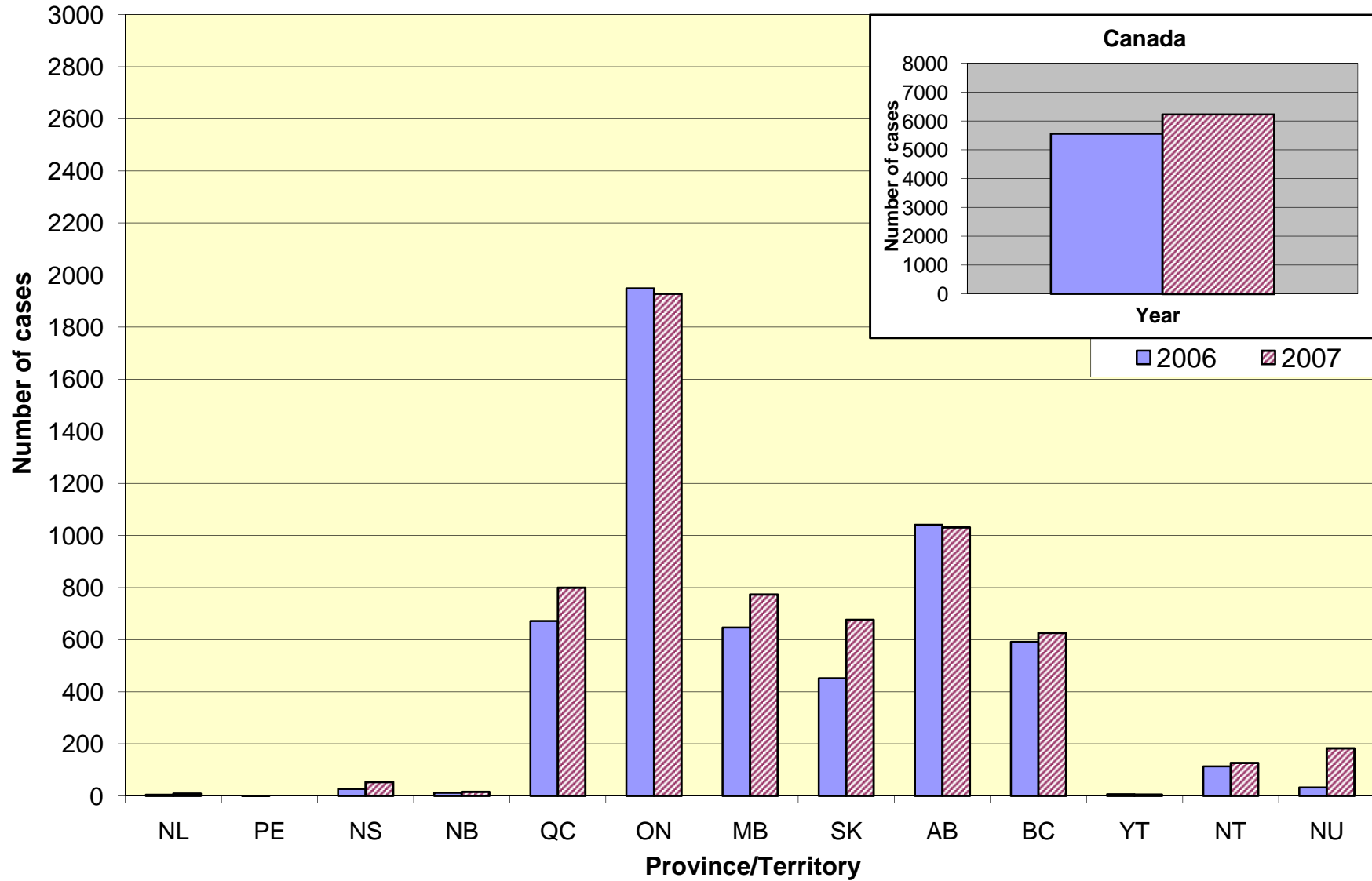
Note: Small variability may exist between data reported by the provinces/territories and the Public Health Agency of Canada. Provincial/territorial data are definitive should a discrepancy exist.

Source: Surveillance and Epidemiology Section, Community Acquired Infections Division, Centre for Communicable Diseases and Infection Control, Public Health Agency of Canada, 2008.

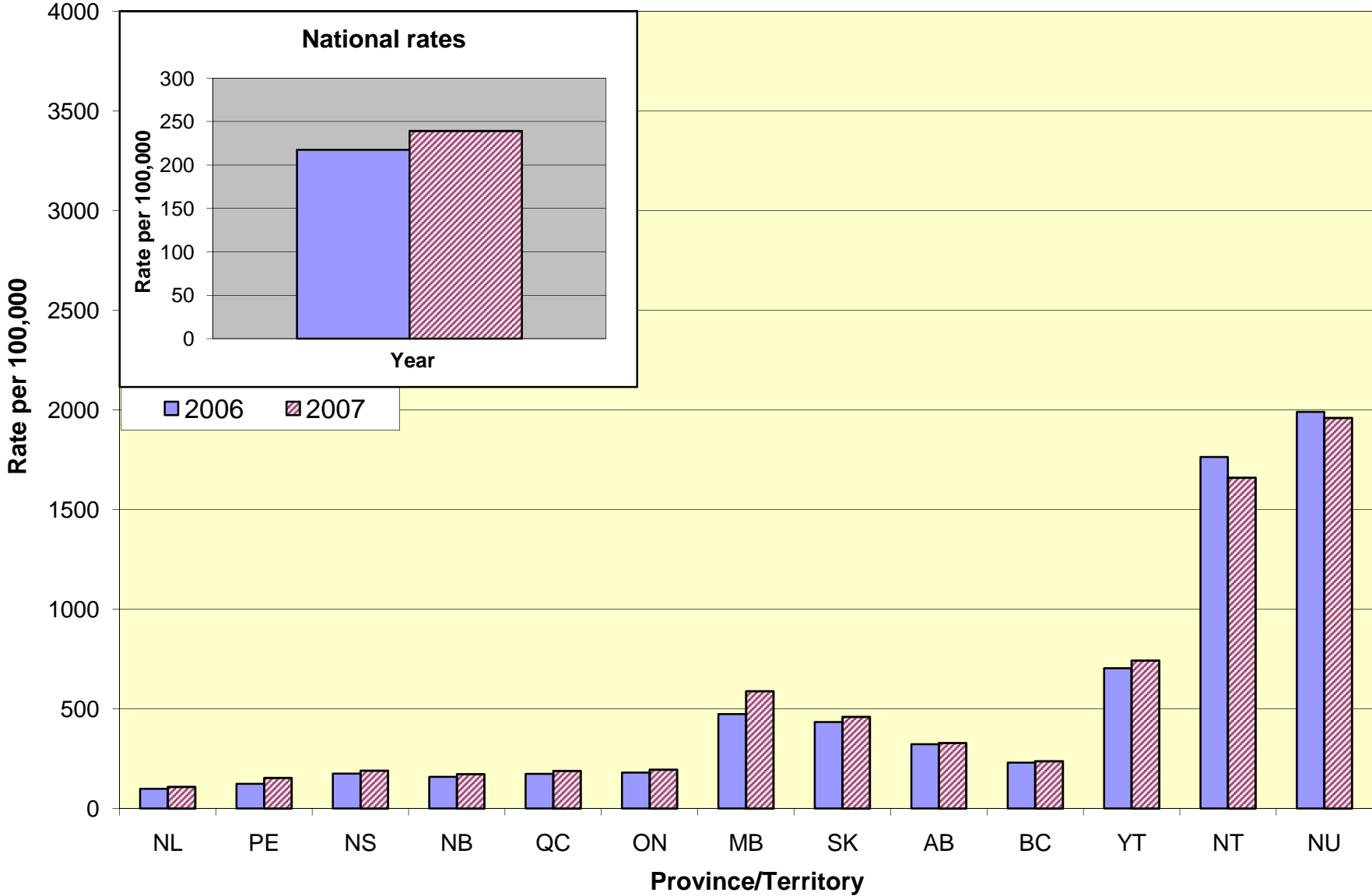
Cumulative cases of genital chlamydia from January 1 to June 30, 2007



**Cumulative cases of gonorrhoea from January 1 to June 30, 2007
and January 1 to June 30, 2008**



Reported rate of genital chlamydia in 2007 and projected rate for 2008



Reported rate of gonorrhoea in 2007 and projected rate for 2008

