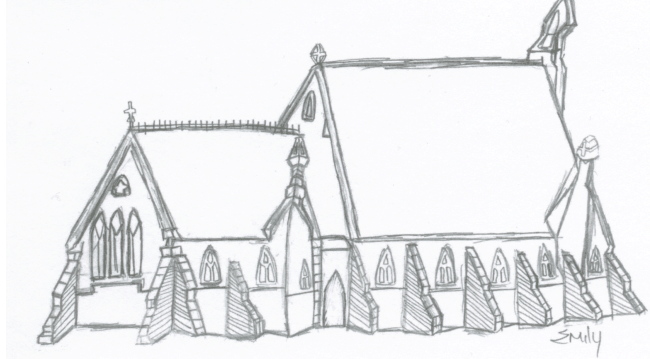


Colouring Kensington Market A Children's Kensington Market FUN Tour

★ **Start at Corner of College Street and Bellevue Avenue.** (Between Bathurst Street and Spadina Avenue)

1. St. Stephen-in-the-Fields Church

St. Stephen's in the Fields Anglican Church



The **St. Stephen-in-the-Fields Church** was built in 1862. It is located at _____ Bellevue Avenue.

2. No.8 Hose Station

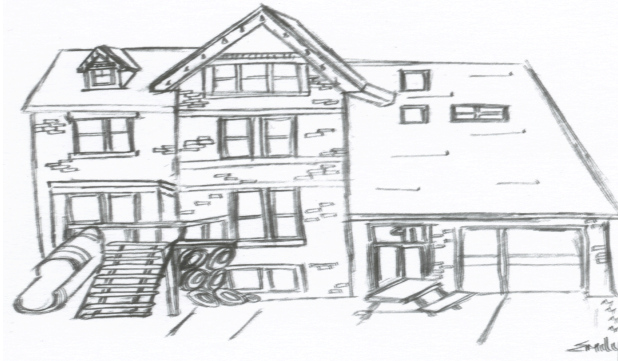
The **No. 8 Hose Station**, across from the church, was built in 1911. It was the first to get a fire engine. It can now fit (#) _____ fire trucks.

No. 8 Hose Station



3. 91 Bellevue Avenue.

St. Stephen's Community House



The **St. Stephen's Community House building** was built in 1887. It is located on 91 Bellevue Avenue. There's a _____ for children in the front of the building.

4. Corner of Oxford Street and Bellevue Avenue.

91 Oxford Street was used for **Bell Canada** until 1932. Today this building is called Precision _____.

5. Walk south on Bellevue Avenue, west on Nassau Street, south on Leonard Avenue.

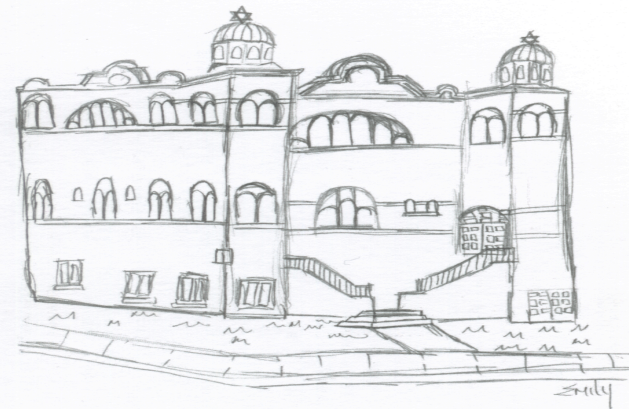
Leonard Avenue: Toronto Western Hospital was a farm before 1899. Today, the hospital has many buildings. The highest building has (#) _____ floors.

Draw a picture of a farm.



6. Walk east on Wales Avenue and north on Bellevue Avenue.

Kiever Synagogue



The **Kiever Synagogue** began in 1901 and was built at the corner of Bellevue Avenue and _____ Square.

7. North east corner of Denison Square.

From 1815 to 1889, the Belle Vue Estate was the only building on the Square. It was beside where the Kiever Synagogue is today. It was owned by a family that came from England, called the Denison family. Write something about your family and where they have come from.



St. Stephen's Community House

260 Augusta Avenue
 Toronto, ON M5T 2L9
 416-964-8747
 Call us to book your group tour.

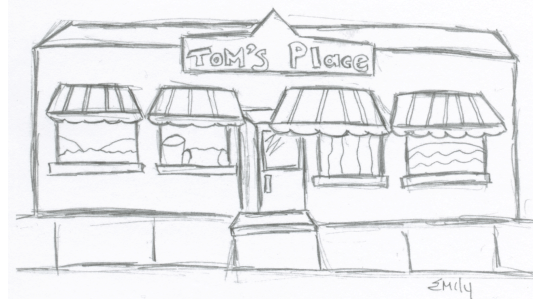
This project was made possible by the staff and volunteers of St. Stephen's Community House, and we would like to offer thanks to the following funders:



8. Walk east on Denison Square, north on Augusta Avenue.

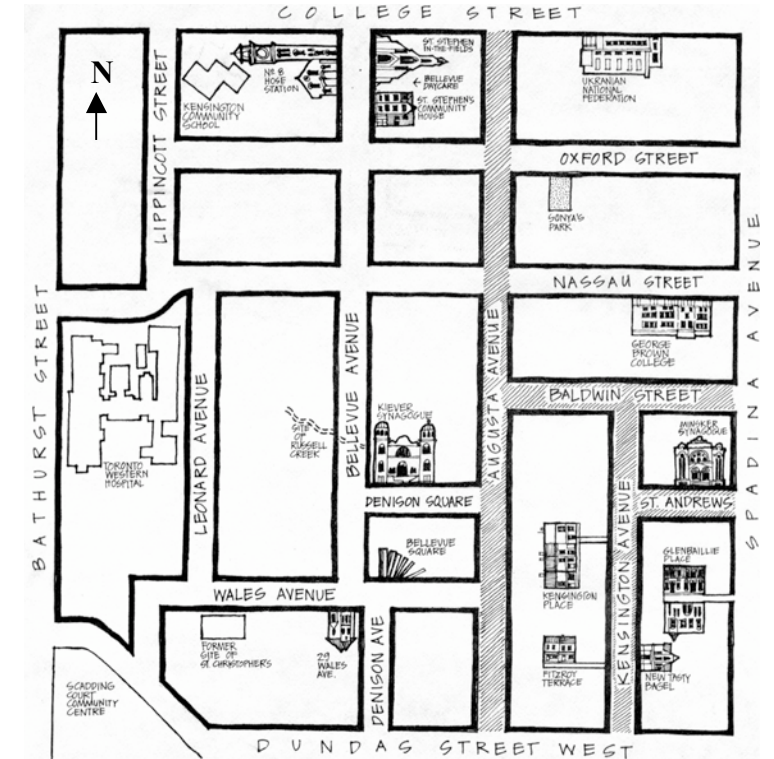
The first street going east from Augusta Avenue is a very busy street. **Tom's Place** has been on _____ Street since 1958.

Tom's Place



Colouring Kensington Market

A Children's Kensington Market FUN Tour



A WALKING TOUR OF KENSINGTON

Approximate walking time 45-60 minutes