



Metal Can Defects

Identification and Classification

New

30/04/89

TABLE OF CONTENTS - COATING APPLICATION DEFECTS

<u>DEFECT</u>	<u>SECTION</u>
COATING DRIP	7.2.1
COATING SKIPS	7.2.2
FOREIGN PARTICLES IN COATING	7.2.3

Metal Can Defects

Identification and Classification

Amend.no.2

15/12/97

DEFECT: COATER DRIP

CLASSIFICATION:

A coater drip is considered a minor defect unless careful examination proves that the defect is a serious defect. A coater drip is considered a serious coating application defect if a hole and/or plate corrosion is detected, after a thorough examination, which would include opening the can or removal of the coater drip to determine the condition of the metal plate.

DESCRIPTION:

A drop of coating, exterior or interior, often appearing as tiny hard metallic bubbles of coating. A coating drip may resemble a scrap-in-die type defect.

COMMON SOURCES:

1. Drips or splashes from the coating operation.
-





Metal Can Defects

Identification and Classification

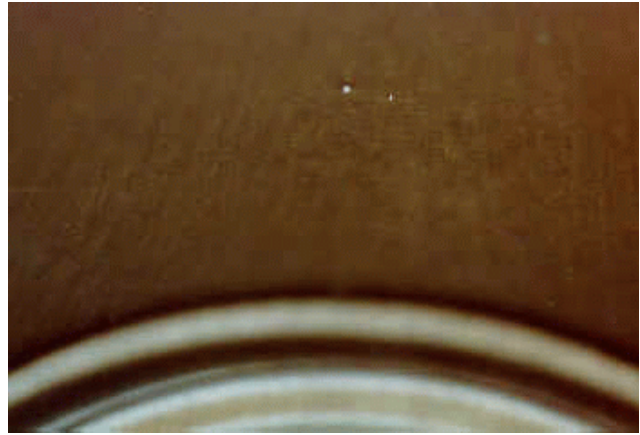
New

30/04/89

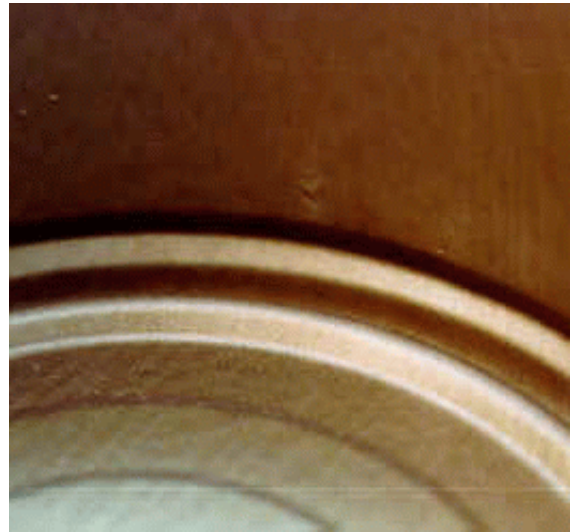
DEFECT: COATER DRIP



A



INSIDE VIEW OF A



Metal Can Defects

Identification and Classification

Amend.no.2

15/12/97

DEFECT: COATING SKIPS

CLASSIFICATION:

Coating skips are considered serious coating application defects if:

- 1) internal and contents are corrosive; or
- 2) external and plate is corroded.

Coating skips are considered minor coating application defects if:

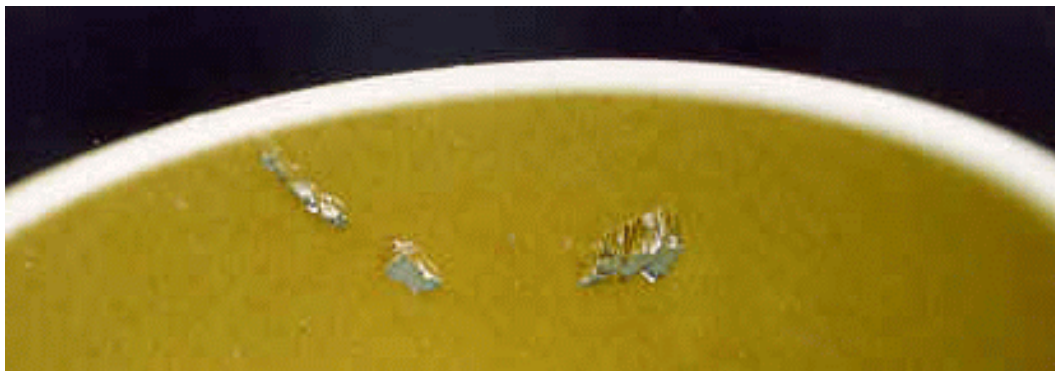
- 1) external and no corrosion; or
 - 2) internal and contents are non-corrosive.
-

DESCRIPTION:

Any discontinuity (bare spots, hairline skips, eyeholing) in the coating. Corrosion or sulphide production (reaction with product) may be present. See also section 7.7.3 - CORROSION

COMMON SOURCES:

1. Dirt, grease or other foreign material on the metal plate prior to coating.
 2. Misapplication of the coating to the metal plate.
-



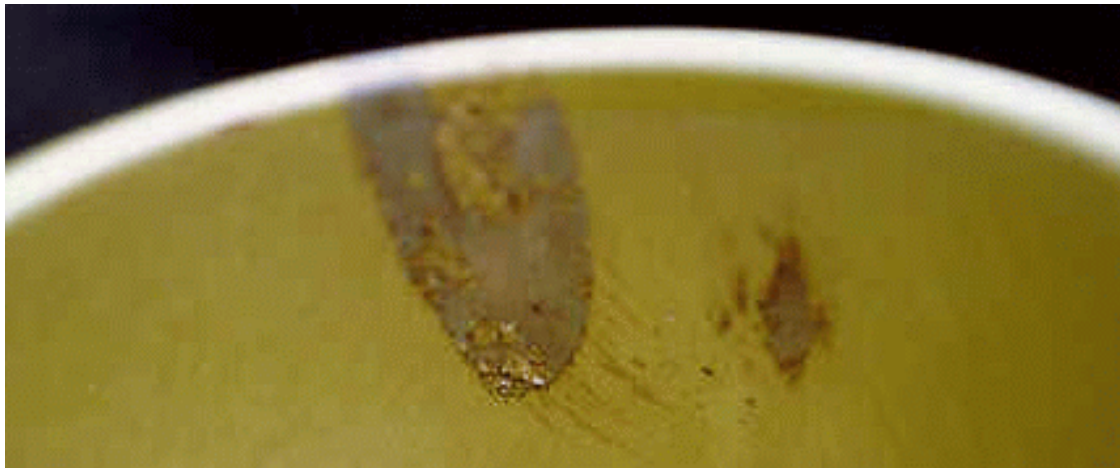
Metal Can Defects

Identification and Classification

New

30/04/89

DEFECT: COATING SKIPS





Metal Can Defects

Identification and Classification

Amend.no.1

30/06/93

DEFECT: FOREIGN PARTICLES IN COATING

CLASSIFICATION:

A minor coating application defect.

DESCRIPTION:

Small particles in the coating surface, often black in colour. Coating ash may appear as a line on the body wall of two piece cans as the result of the drawing operation.

COMMON SOURCES:

1. Coating ash or charred particles of coating, dirt or other foreign particles that may adhere to the wet coating before it is baked.
-



INSIDE VIEW



OUTSIDE VIEW