

**Canadian Shellfish Sanitation Program -
Manual of Operations**

APPENDIX III

**PROCEDURES FOR MOLLUSCS EXCEEDING CFIA
BACTERIOLOGICAL GUIDELINES**

1. Domestically processed shellfish or raw products derived therefrom, whether fresh or frozen, are considered bacteriologically acceptable for direct market when they are:
 - i) harvested from an approved or a conditionally approved area in the open status, and;
 - ii) meet the CFIA's bacteriological Guidelines for Fish and Fish Products.

These procedures apply to molluscan shellfish processed at federally registered establishments in Canada or sampled from approved or conditionally approved shellfish growing areas and will be followed by the federal CSSP partners where appropriate.

1. If a shellfish sample collected at a CFIA registered shellfish processing establishment fails to meet a bacteriological guideline and, upon verification, the Quality Management Program is deemed to be in control, the following actions will be taken by CFIA:
 - i) Collect five (5) sample units at the implicated harvest area as soon as possible¹.
 - ii) Contact the leasing authority (if applicable) to inform them of the situation, actions taken and potential outcomes.
2. Should results of sample units collected from the implicated harvest area meet the CFIA's bacteriological guidelines, no harvest area action is taken.
3. If results of the harvest area sampling (i.e. E. coli) do not meet the CFIA bacteriological guidelines, the CFIA will make a recommendation to DFO to place the implicated harvest area in the closed status. The size of the closure will be determined on a case by case basis.

¹ If mutually agreed, harvest site samples may be collected by another federal or provincial department or individual. Sample units are to be taken from separate, randomly selected sites in the implicated area.

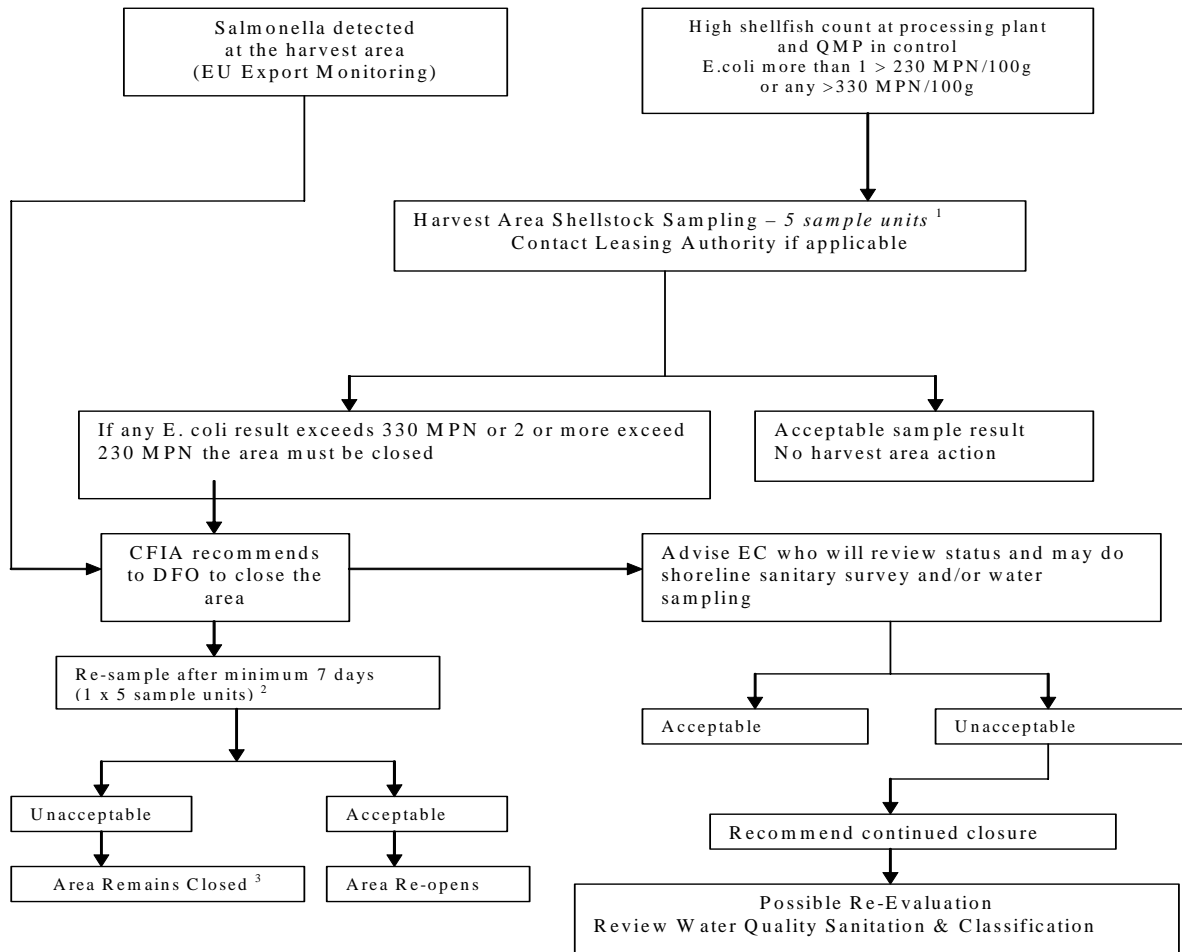
Canadian Shellfish Sanitation Program - Manual of Operations

- i) The CFIA will contact EC and inform them of the unacceptable results. EC will review the status of the area and may conduct a shoreline sanitary survey and/or collect additional water quality samples based on the results of the review.

- ii) The area may be re-sampled by CFIA five (5) sample units after a minimum of seven (7) days. If the results are acceptable, CFIA, in consultation with Environment Canada, will recommend to DFO to place the harvest area in the open status. This additional sampling is at the discretion of CFIA (i.e. if the area was placed in the closed status, it may be kept as such and EC requested to re-evaluate the area as survey schedules permit). If the results are unacceptable the area will remain in the closed status.

Canadian Shellfish Sanitation Program - Manual of Operations

FLOW DIAGRAM



¹ Sample units are to be taken from separate, randomly selected sites in the implicated area.

² If the EC recommends closure, additional harvest area shellstock samples need not be taken.

³ The CFIA does not need to re-sample the area indefinitely. The area may be kept closed and EC requested to re-evaluate the area as survey schedules permit.