



APPLICATIONS UNDER EXAMINATION

COLEUS

COLEUS

(Solenostemon scutellarioides)

Proposed denomination: 'Balcenna'
Trade name: Henna
Application number: 07-5878
Application date: 2007/04/12
Applicant: Ball Horticultural Company, West Chicago, Illinois, United States of America
Agent in Canada: BioFlora Inc., St. Thomas, Ontario
Breeder: Ball Horticultural Company, West Chicago, Illinois, United States of America

Variety used for comparison: 'Rustic Orange'

Summary: *The stems of 'Balcenna' are brown purple (RHS 151B) with very strong anthocyanin colouration while those of 'Rustic Orange' are green brown (RHS 187A) with very weak anthocyanin. The leaf blade margin is irregularly incised for 'Balcenna' whereas it is crenate for 'Rustic Orange'. Depth of the leaf blade margin incisions is moderate to deep for 'Balcenna' while it is shallow for 'Rustic Orange'. The upper side of the leaf blade of 'Balcenna' is brown purple mottled with light green whereas it is yellow brown mottled with red pink and with a yellow margin speckled with red for 'Rustic Orange'. The lower side of the leaf blade of 'Balcenna' is dark purple red while it is light yellow brown for 'Rustic Orange'. 'Balcenna' has stronger anthocyanin colouration of the petiole than 'Rustic Orange'.*

Description:

PLANT: vegetatively propagated, annual type, upright bushy growth habit, medium to many branches

STEM: brown purple, very strong anthocyanin colouration, sparse to moderate pubescence, thick, square shape in cross-section

LEAF: opposite arrangement along stem, simple type

LEAF BLADE: ovate, acuminate apex, obtuse to truncate base, irregularly incised margin, medium to deep incisions of margin, variegation present

LEAF BLADE (upper side): moderate pubescence, purple mid-rib and secondary veins, interveinal area is brown purple mottled with light green, margin is brown purple speckled with light green

LEAF BLADE (lower side): sparse and short pubescence on veins only, dark purple red

PETIOLE: strong to very strong anthocyanin colouration

Origin and Breeding: 'Balcenna' originated from a cross pollination conducted in January 2004, at Dulce Nombre de Cartago in Costa Rica, as part of a controlled breeding program. The female parent was variety 'Duck's Foot' characterized by its scarlet foliage and upright plant growth habit. The male parent was a bulk pollen mix of Wizard varieties characterized by their green, red, magenta, yellow green and scarlet foliage, zoned and solid foliage colour patterns and upright plant growth habit. 'Balcenna' was selected on November 18, 2004 based on its vigour, foliage colour and plant growth habit.

Tests and Trials: Trials for 'Balcenna' were conducted during the summer of 2008 at BioFlora Inc. in St. Thomas, Ontario. The trial included 15 plants of each variety. All plants were grown from rooted cuttings transplanted into 15 cm pots on August 12, 2008. Measured characteristics were based on measurements taken from 10 plants or parts of plants on September 19, 2008. All colour determinations were made using the 2001 Royal Horticultural Society (RHS) Colour Chart.

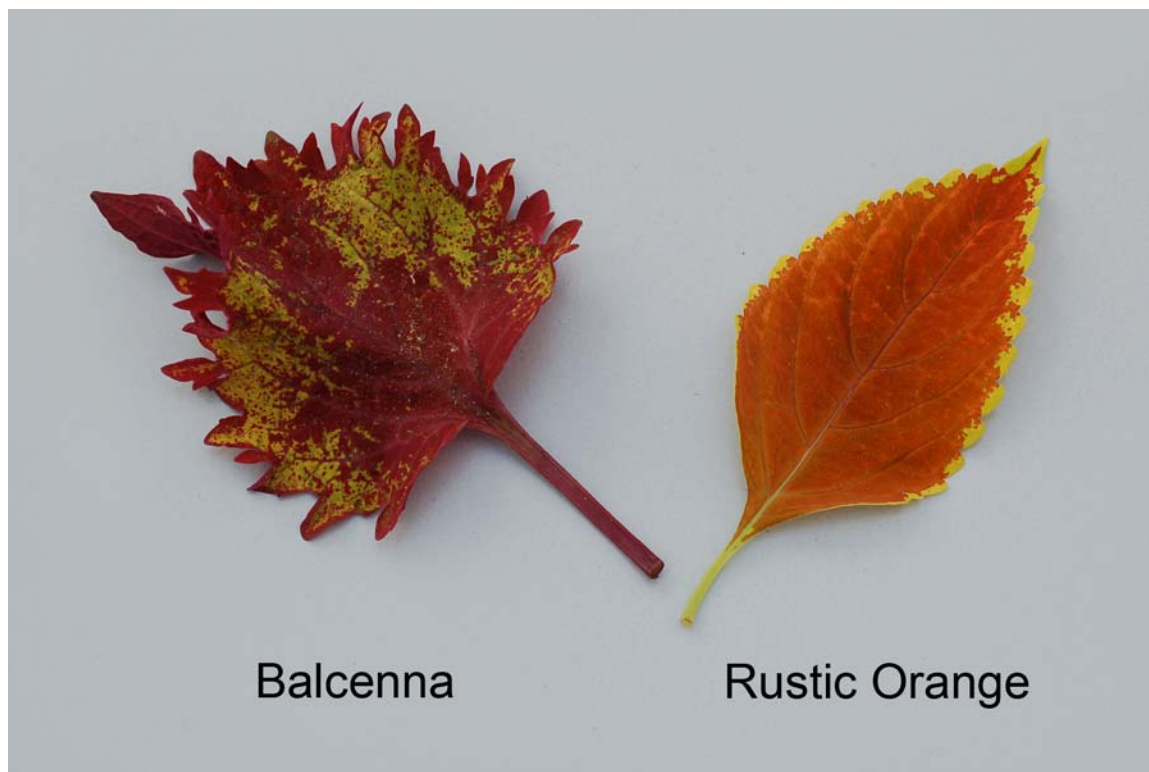
Comparison table for 'Balcenna'

	'Balcenna'	'Rustic Orange'
<i>Colour of leaf blade (RHS)</i>		
upper side - interveinal area	183A mottled with N144A	N167A mottled with 52B-C
upper side - margin	183A speckled with N144A	7B-D at margin edge speckled with 43A
lower side	59A	160B

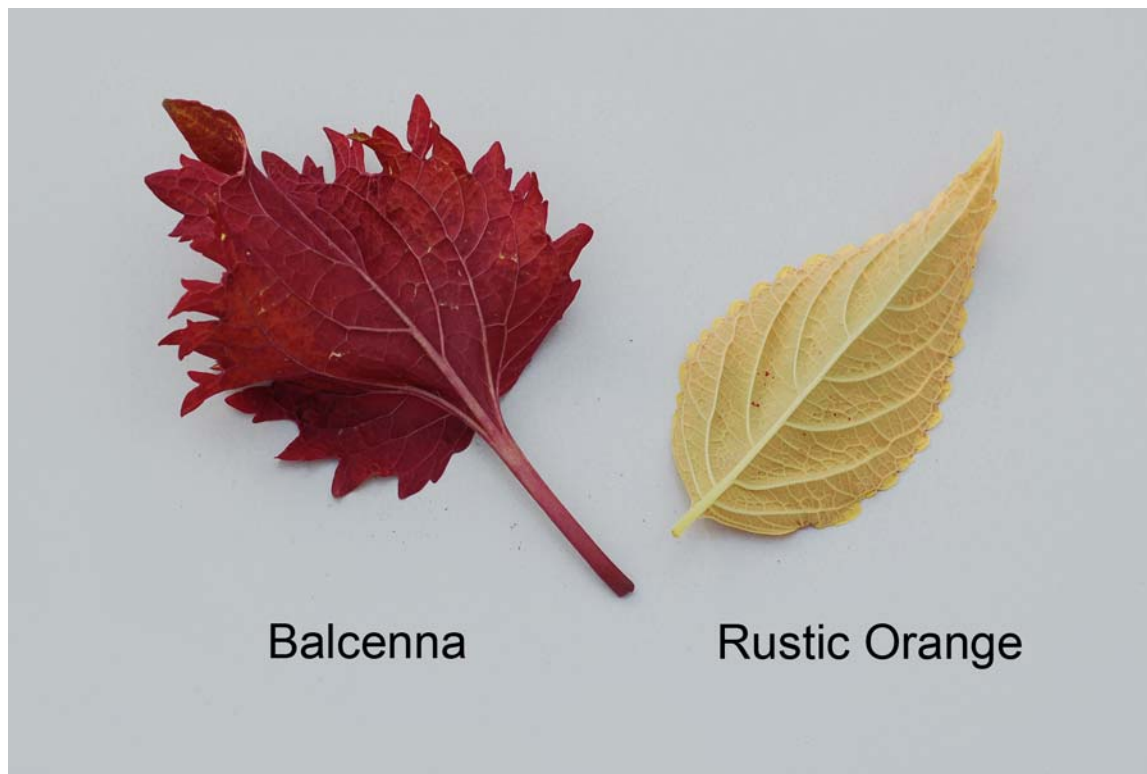
*reference variety



Coleus: 'Balcenna' (left) with reference variety 'Rustic Orange' (right)



Coleus: 'Balcenna' (left) with reference variety 'Rustic Orange' (right)



Coleus: 'Balcenna' (left) with reference variety 'Rustic Orange' (right)

Proposed denomination:	'Balcinsu'
Trade name:	Indian Summer
Application number:	07-5879
Application date:	2007/04/12
Applicant:	Ball Horticultural Company, West Chicago, Illinois, United States of America
Agent in Canada:	BioFlora Inc., St. Thomas, Ontario
Breeder:	Ball Horticultural Company, West Chicago, Illinois, United States of America

Variety used for comparison: 'Volcano'

Summary: *'Balcinsu' has shorter petioles than 'Volcano'. The colour of the mid-rib and secondary veins on the upper side of the leaf blade is purple for 'Balcinsu' whereas it is brown purple for 'Volcano'. The interveinal area on the upper side of the leaf blade of 'Balcinsu' is dark purple red speckled with brown purple, dark green and yellow green while it is brown purple with purple red spots for 'Volcano'. The colour of the leaf blade margin on the upper side is brown purple speckled with dark green and yellow green while it is dark green with flecks of light yellow for 'Volcano'.*

Description:

PLANT: vegetatively propagated, annual type, bushy upright growth habit, medium number of branches

STEM: brown purple to dark purple red, very strong anthocyanin colouration, sparse pubescence, thick, square shape in cross-section

LEAF: opposite arrangement along stem, simple type

LEAF BLADE: ovate, acuminate apex, cuneate base, crenate margin, medium deep incisions of margin, variegation present

LEAF BLADE (upper side): sparse to moderate pubescence, purple mid-rib and secondary veins, interveinal area is dark purple red speckled with brown purple, dark green and yellow green, margin is brown purple speckled with dark green and yellow green

LEAF BLADE (lower side): sparse to moderate pubescence on veins only, brown purple to dark purple red

PETIOLE: strong anthocyanin colouration

Origin and Breeding: ‘Balcinsu’ originated from a cross pollination conducted in January 2004, at Dulce Nombre de Cartago in Costa Rica, as part of a controlled breeding program. The female parent was variety ‘Elfers’ characterized by its deep purple, green and magenta foliage and upright plant growth habit. The male parent was a bulk pollen mix of Wizard varieties characterized by their green, red, magenta, yellow green and scarlet foliage, zoned and solid foliage colour patterns and upright plant growth habit. ‘Balcinsu’ was selected on November 18, 2004 based on its vigour, foliage colour and plant growth habit.

Tests and Trials: Trials for ‘Balcinsu’ were conducted during the summer of 2008 at BioFlora Inc. in St. Thomas, Ontario. The trial included 15 plants of each variety. All plants were grown from rooted cuttings transplanted into 15 cm pots on August 12, 2008. Measured characteristics were based on measurements taken from 10 plants or parts of plants on September 17, 2008. All colour determinations were made using the 2001 Royal Horticultural Society (RHS) Colour Chart.

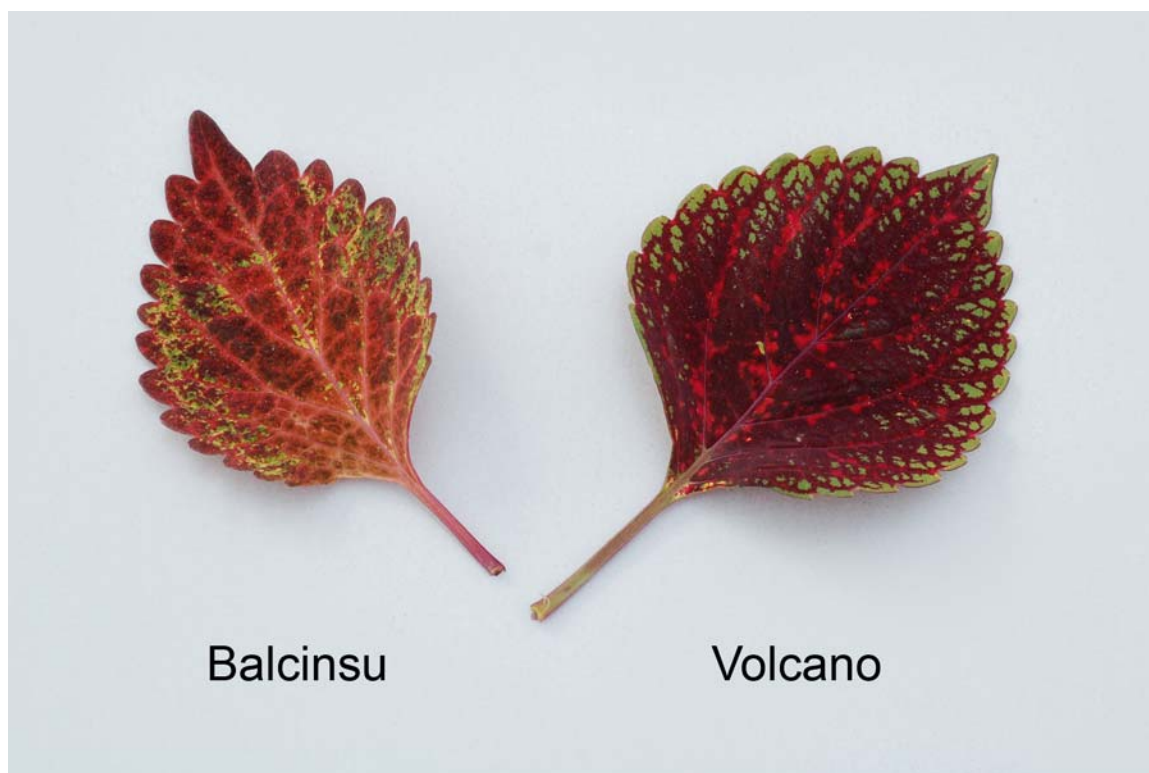
Comparison table for ‘Balcinsu’

	‘Balcinsu’	‘Volcano’*
<i>Colour of leaf blade (RHS)</i>		
upper side - mid-rib & secondary veins	64A	close to 186A
upper side - interveinal area	185A speckled with 187A, 141B and 150B	darker than 187A with spots darker than N57A
upper side - margin	187A speckled with 141B-C and 150B	144A along margin with flecks of 8B-C
lower side	187A-B	close to N186C
<i>Petiole length (cm)</i>		
mean	1.7	2.6
std. deviation	0.29	0.27

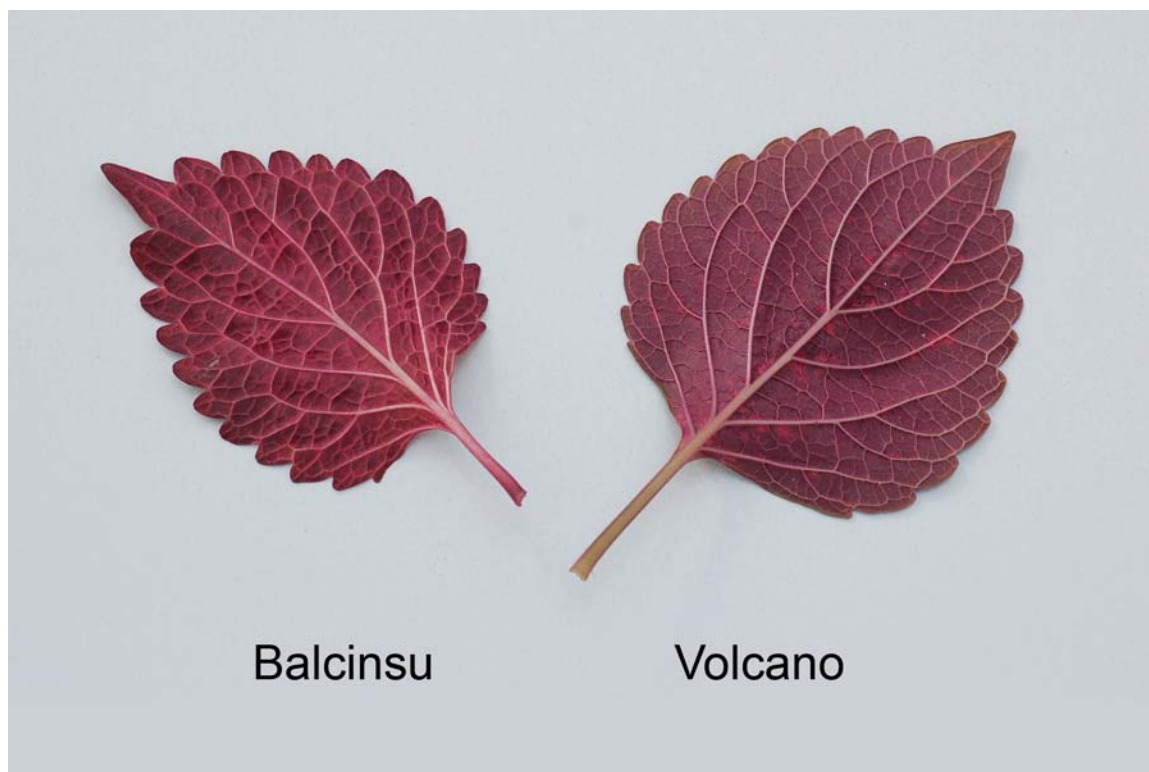
*reference variety



Coleus: ‘Balcinsu’ (left) with reference variety ‘Volcano’ (right)



Coleus: 'Balcinsu' (left) with reference variety 'Volcano' (right)



Coleus: 'Balcinsu' (left) with reference variety 'Volcano' (right)

Proposed denomination: 'UF04335'
Trade name: Electric Lime
Application number: 07-5900
Application date: 2007/04/26
Applicant: Florida Foundation Seed Producers, Inc., Greenwood, Florida, United States of America
Agent in Canada: BioFlora Inc., St. Thomas, Ontario
Breeder: Phuong N. Nguyen, University of Florida, Gainesville, Florida, United States of America
 David G. Clark, University of Florida, Gainesville, Florida, United States of America

Variety used for comparison: 'Wild Lime'

Summary: *The shape of the leaf blade apex is acuminate with a blunt tip for 'UF04335' while it is acute for 'Wild Lime'. The upper side of the leaf blade of 'UF04335' is dark green with light yellow to yellow veins whereas for 'Wild Lime', it is dark green with light yellow veins and yellow orange to light yellow spots distributed throughout the middle of the leaf blade (excluding the margin). The lower side of the leaf blade of 'UF04335' is dark green mottled yellow orange with yellow green veins while it is brown green with green veins for 'Wild Lime'. Undulation of the leaf blade margin is absent to very weak for 'UF04335' while it is strong for 'Wild Lime'.*

Description:

PLANT: vegetatively propagated, annual type, upright bushy growth habit, few to medium number of branches
STEM: light green brown (RHS 151D), absent to very weak anthocyanin colouration, sparse pubescence, medium thickness, square shape in cross-section

LEAF: opposite arrangement along stem, simple type

LEAF BLADE: ovate, acuminate apex with blunt tip, cuneate to truncate base, crenate margin, shallow incisions of margin, variegation present

LEAF BLADE (upper side): very sparse pubescence, light yellow mid-rib and secondary veins, interveinal and margin areas are dark green speckled with yellow around veins

LEAF BLADE (lower side): very sparse pubescence, yellow green veins, dark green mottled with yellow orange

PETIOLE: absent or very weak anthocyanin colouration

Origin and Breeding: 'UF04335' originated from an open pollinated seed variety in a controlled breeding program, conducted between May and November 2005, at the University of Florida in Gainesville, Florida, U.S.A. The female parent is *Solenostemon scutellarioides* variety 'UF0316' characterized by its green foliage, excellent vigour and optimal branching habit. The male parent is unknown. 'UF04335' was selected on February 8, 2005 based on its bright green foliage, excellent branching, late flowering induction and sun tolerance.

Tests and Trials: Trials for 'UF04335' were conducted during the summer of 2008 at BioFlora Inc. in St. Thomas, Ontario. The trial included 15 plants of each variety. All plants were grown from rooted cuttings transplanted into 15 cm pots on August 12, 2008. Measured characteristics were based on measurements taken from 10 plants or parts of plants on September 17, 2008. All colour determinations were made using the 2001 Royal Horticultural Society (RHS) Colour Chart.

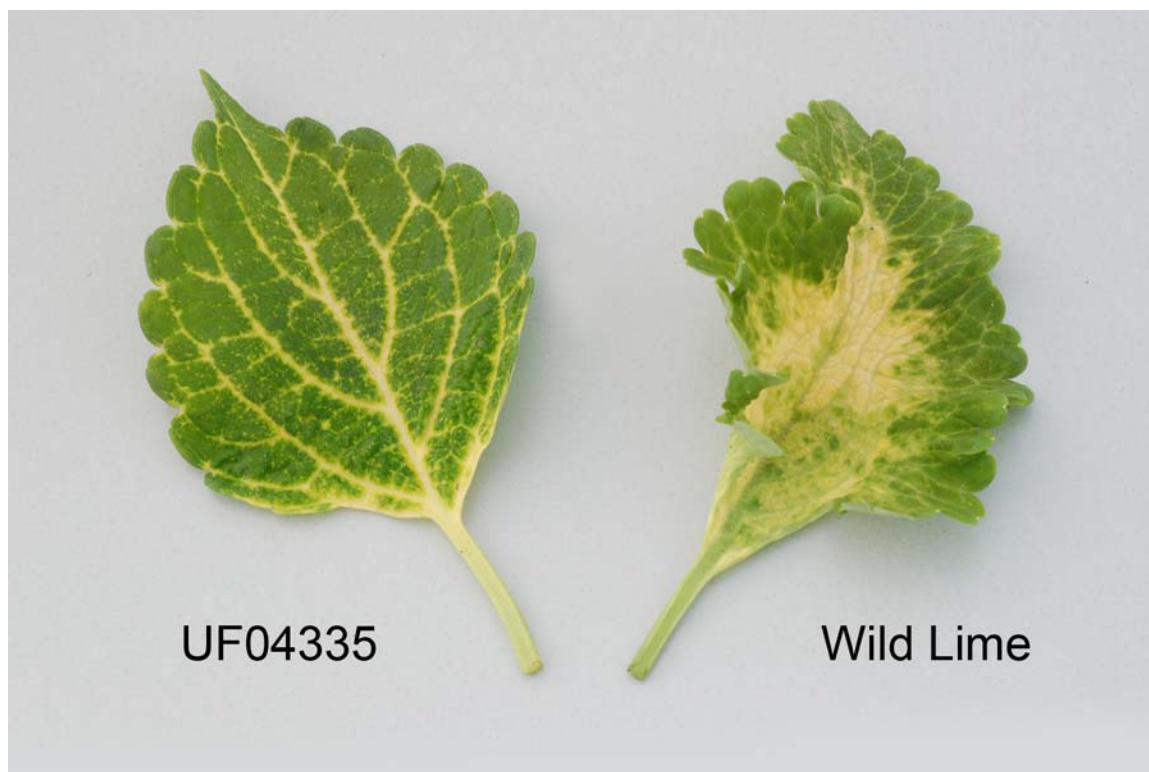
Comparison table for 'UF04335'

	'UF04335'	'Wild Lime**'
Colour of leaf blade (RHS)		
upper side - mid-rib & secondary veins	4D surrounded by 9B	144B
upper side - interveinal area	darker than 143A speckled with 9B around veins	144A with spots of 13C-D
upper side - margin	darker than 143A speckled with 9B	144A and 146B
lower side	143A mottled with 13A-B and 4C veins	146C

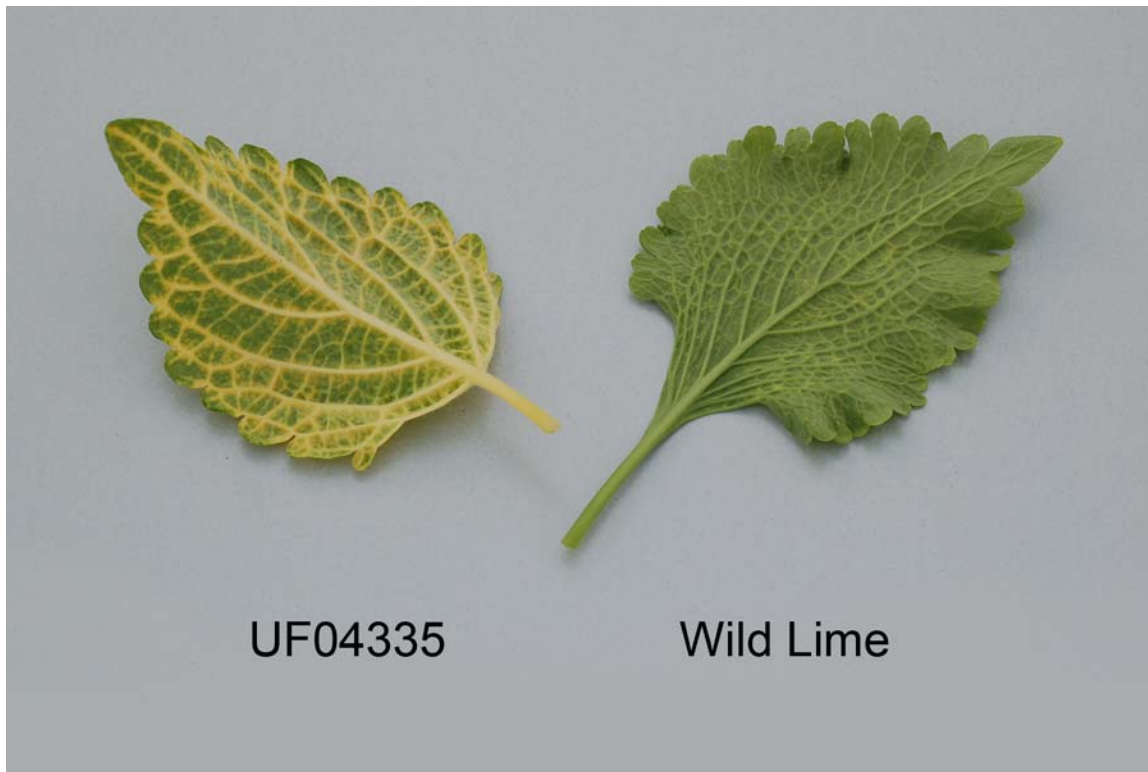
*reference variety



Coleus: 'UF04335' (left) with reference variety 'Wild Lime' (right)



Coleus: 'UF04335' (left) with reference variety 'Wild Lime' (right)



Coleus: 'UF04335' (left) with reference variety 'Wild Lime' (right)
