



COLEUS

(Solenostemon scutellarioides)

Proposed denomination: 'UF06419'
Trade name: Trusty Rusty
Application number: 09-6561
Application date: 2009/03/19
Applicant: Florida Foundation Seed Producers, Inc., Greenwood, Florida, United States of America
Agent in Canada: BioFlora Inc., St. Thomas, Ontario
Breeder: David Clark, Greenwood, Florida, United States of America
 Phuong N. Nguyen, Florida Foundation Seed Producers, Inc., Greenwood, Florida, United States of America

Variety used for comparison: 'Rustic Orange'

Summary: *The plants of 'UF06419' are taller and wider than the plants of 'Rustic Orange'. The stems of 'UF06419' have strong anthocyanin colouration in streaks while the stems of 'Rustic Orange' have medium anthocyanin at the nodes only. The leaf blade of 'UF06419' is wider than the leaf blade of 'Rustic Orange'. The upper side of the leaf blade is orange brown for 'UF06419' while the leaf blade of 'Rustic Orange' is light yellow brown with tones of orange brown. The margin on the leaf blade is yellow to light yellow with blotches of brown purple and brown for 'UF06419' while the margin is yellow and brown purple for 'Rustic Orange'. The petiole of 'UF06419' is longer than the petiole of 'Rustic Orange'.*

Description:

PLANT: upright bushy growth habit, medium degree of branching

STEM: light green, strong anthocyanin colouration in streaks, medium pubescence, medium thickness, edged shape

LEAF: opposite arrangement, simple, ovate shape, acuminate apex, cuneate and truncate base, crenate margin, shallow to medium depth margin incisions, sparse pubescence on upper and lower side, variegation present

UPPER SIDE: midrib and secondary veins brown purple (redder than RHS 186A), interveinal area brown (RHS 172A-B) fading towards base with occasional spots of blue pink (RHS 63B-C), margin yellow to light yellow (RHS 8A-B) with blotches of brown purple (RHS 178A) and brown (RHS 172A)

LOWER SIDE: margin light yellow (RHS 8B), main colour brown green (lighter than RHS 148C), occasional blotches of brown purple (RHS 186A)

PETIOLE: weak to medium anthocyanin colouration.

Origin and Breeding: The variety 'UF06419' originated as an open pollinated seed variety made at the University of Florida in Gainesville, Florida, USA in 2005. The female parent was the variety 'Elfers', characterized by its deep purple, green, red and gold multicoloured foliage, excellent vigour, heat tolerance, optimal branching habit and late flowering characteristics. The male parent is unknown. The initial selection was made in March 2006 and propagation since that time has been made through the use of vegetative cuttings. Selection criteria included stable leaf colour in sunny and shady locations, distinct variegated leaves, late flower induction, exceptional branching and growth habit.

Tests and Trials: Trials for 'UF06419' were conducted in a polyhouse during the summer of 2010 in St. Thomas, Ontario. The trial included a total of fifteen plants of the candidate and reference varieties. All plants were grown from rooted cuttings and transplanted into 15 cm pots on May 5, 2010. Observations and measurements were taken from ten plants or parts of plants on June 3, 2010. All colour determinations were made using the 2007 Royal Horticultural Society (RHS) Colour Chart.

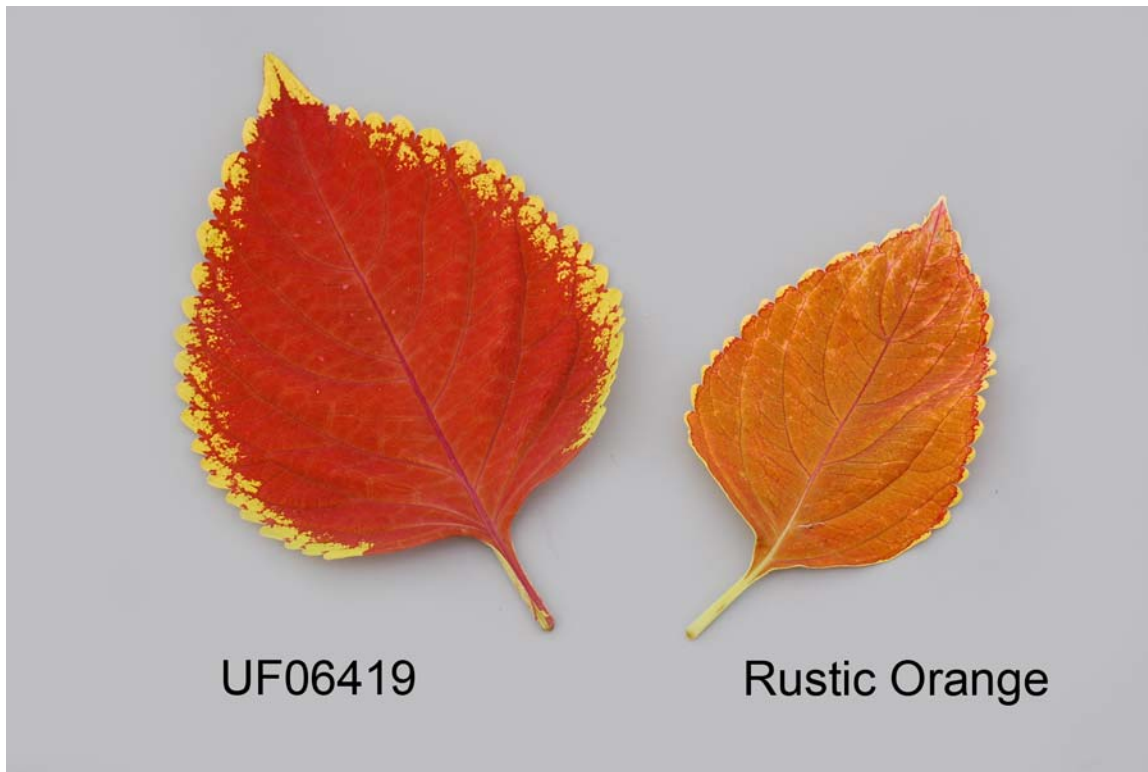
Comparison table for 'UF06419'

	'UF06419'	'Rustic Orange'*
<i>Plant height (cm)</i>		
mean	24.2	16.1
std. deviation	2.00	1.17

<i>Plant width (cm)</i>		
mean	37.6	29.6
std. deviation	1.85	2.32
<i>Leaf blade width (cm)</i>		
mean	8.8	6.5
std. deviation	0.44	0.31
<i>Colour of upper side of leaf blade (RHS)</i>		
interveinal area	N172A-B, fading to N172A-D at base	163A-B with tones of 172D
margin	8A-B, blotches of 178A and 172A	7A at apex, 185B along base
<i>Color of lower side of leaf blade (RHS)</i>		
main	148C (lighter than)	7B and 148C (more yellow than)
margin	8B	7B
<i>Petiole length (cm)</i>		
mean	4.6	1.8
std. deviation	0.25	0.69
*reference variety		



Coleus: 'UF06419' (left) with reference variety 'Rustic Orange' (right)



Coleus: 'UF06419' (left) with reference variety 'Rustic Orange' (right)

Proposed denomination:	'UF0646'
Trade name:	Redhead
Application number:	09-6562
Application date:	2009/03/19
Applicant:	Florida Foundation Seed Producers, Inc., Greenwood, Florida, United States of America
Agent in Canada:	BioFlora Inc., St. Thomas, Ontario
Breeder:	David Clark, Greenwood, Florida, United States of America Phuong N. Nguyen, Florida Foundation Seed Producers, Inc., Greenwood, Florida, United States of America

Variety used for comparison: 'Big Red Judy'

Summary: *The plants of 'UF0646' are shorter than the plants of 'Big Red Judy'. The leaf blade of 'UF0646' is shorter than the leaf blade of 'Big Red Judy'. The upper side of the leaf blade is brown purple for 'UF0646' while it is dark reddish brown purple for 'Big Red Judy'. The petiole is longer for 'UF0646' than for 'Big Red Judy'.*

Description:

PLANT: upright bushy growth habit, medium degree of branching

STEM: light green, very strong anthocyanin colouration, sparse pubescence, medium thickness, edged shape

LEAF: opposite arrangement, simple, ovate shape, acuminate apex, cuneate base, crenate margin, medium depth margin incisions, sparse pubescence on upper side, absent to very sparse pubescence on lower side

UPPER SIDE: mid rib and veins dark violet (RHS N79B), interveinal area and margin brown purple (RHS 187A)

LOWER SIDE: dark reddish brown (redder than RHS N186C)

PETIOLE: strong anthocyanin colouration.

Origin and Breeding: The variety 'UF0646' originated as an open pollinated seed variety made at the University of Florida in Gainesville, Florida, USA in 2005. The female parent was the variety 'Elfers', characterized by its deep purple, green, red and gold multicoloured foliage, excellent vigour, heat tolerance, optimal branching habit and late flowering characteristics.

The male parent is unknown. The initial selection was made in March 2006 and propagation since that time has been made through the use of vegetative cuttings. Selection criteria included stable leaf colour in sunny and shady locations and excellent vigour.

Tests and Trials: Trials for 'UF0646' were conducted in a polyhouse during the summer of 2010 in St. Thomas, Ontario. The trial included a total of fifteen plants of the candidate and reference varieties. All plants were grown from rooted cuttings and transplanted into 15 cm pots on May 5, 2010. Observations and measurements were taken from ten plants or parts of plants on June 3, 2010. All colour determinations were made using the 2007 Royal Horticultural Society (RHS) Colour Chart.

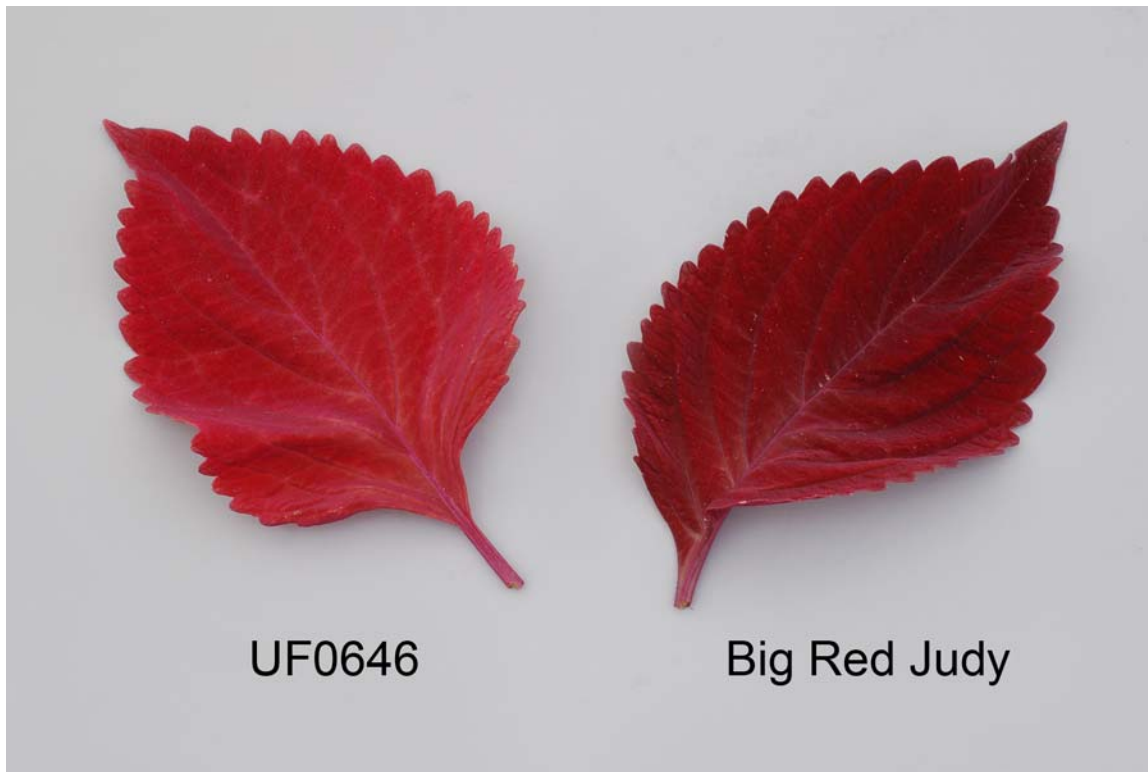
Comparison table for 'UF0646'

	'UF0646'	'Big Red Judy'*
<i>Plant height (cm)</i>		
mean	26.2	36.4
std. deviation	1.51	3.61
<i>Leaf blade length (cm)</i>		
mean	11.0	12.9
std. deviation	0.81	0.68
<i>Colour of leaf blade (RHS)</i>		
upper side - interveinal area	187A	187A (darker and redder than)
upper side - margin	187A	187A (darker and redder than)
<i>Petiole length (cm)</i>		
mean	5.4	2.9
std. deviation	0.53	0.46

*reference variety



Coleus: 'UF0646' (left) with reference variety 'Big Red Judy' (right)



Coleus: 'UF0646' (left) with reference variety 'Big Red Judy' (right)
