



APPLICATIONS UNDER EXAMINATION

POINSETTIA

POINSETTIA
(Euphorbia pulcherrima)

Proposed denomination: 'Oglpnt14001'
Trade name: Polar Bear
Application number: 08-6429
Application date: 2008/08/18
Applicant: Paul Ecke Ranch, Inc., Encinitas, California, United States of America
Agent in Canada: BioFlora Inc., St. Thomas, Ontario
Breeder: Lyndon Drewlow, Lompoc, California, United States of America

Variety used for comparison: '490 White' (Freedom White)

Summary: 'Oglpnt14001' has many branches while '490 White' has a medium number of branches. 'Oglpnt14001' has strong green colour on the leaf blade while '490 White' has medium green colour. 'Oglpnt14001' has a few to medium number of leaf lobes while '490 White' has no leaf lobes. 'Oglpnt14001' has a lower number of small bracts than '490 White'. 'Oglpnt14001' has a shorter bract length than '490 White'. 'Oglpnt14001' has no rugosity between the veins on the bracts while '490 White' has weak rugosity.

Description:

PLANT: many branches

STEM: weak green colour at middle third, absent or weak anthocyanin colouration

LEAF: ovate and elliptic shape, wedge-shaped base, upper side with strong green colour, green main vein, few to medium number of shallow to medium depth lobes, absent or weak curvature of main vein

PETIOLE: weak green colour on upper side, absent or very weak anthocyanin colouration on upper side, absent or weak anthocyanin on lower side

TRANSITIONAL LEAVES: few partly bract coloured leaf blades, few fully bract coloured leaf blades, absent or weak lobing, absent or weak curvature along main vein

BRACTS: few to medium large coloured bracts, few small coloured bracts, elliptic to ovate shape, upper side yellow green (RHS 2D), spotting absent or very weak on upper side, lower side yellow green (RHS 2D), no folding along main vein, no twisting, no rugosity between veins

CYATHIUM GLANDS: medium size, yellow, no deformation.

Origin and Breeding: 'Oglpnt14001' originated from a cross conducted at Lompoc, California, USA in December 1999. The variety was selected in December 2000 for its light yellowish white bract colour, dark green foliage and mid-season bloom date.

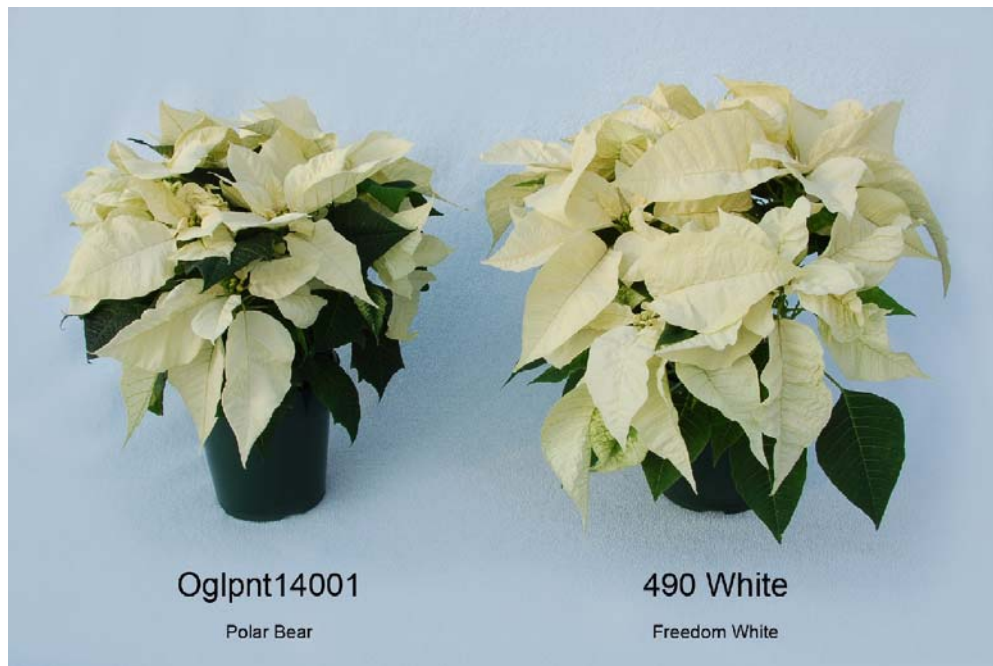
Tests and Trials: Trials for 'Oglpnt14001' were conducted in a greenhouse in St. Catharines, Ontario. The trial included a total of 25 plants each of the candidate variety and reference variety. All plants were grown from rooted cuttings and transplanted into 15 cm pots on July 30, 2009. Plants were spaced 30 cm apart from the pot centre. Observations and measurements were taken from 10 plants of each variety on November 30, 2009. All colour determinations were made using the 2001 Royal Horticultural Society Colour Chart.

Comparison table for 'Oglpnt14001'

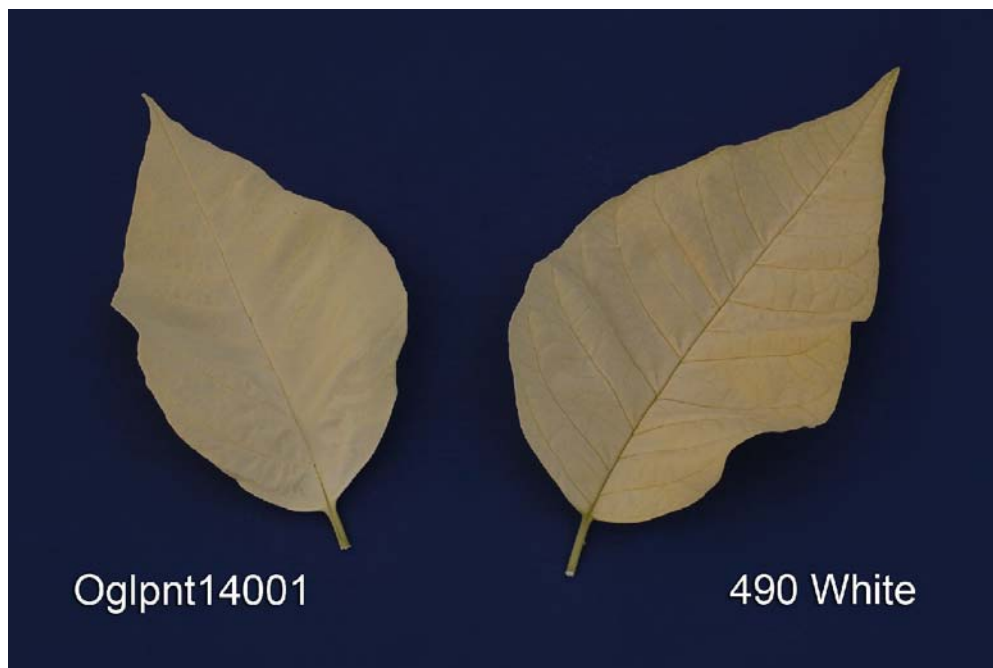
	'Oglpnt14001'	'490 White'*
<i>Number of small coloured bracts</i>		
mean	3.0	5.17
std. deviation	1.10	0.41

<i>Bract length (cm)</i>		
mean	13.8	16.8
std. deviation	0.62	1.30

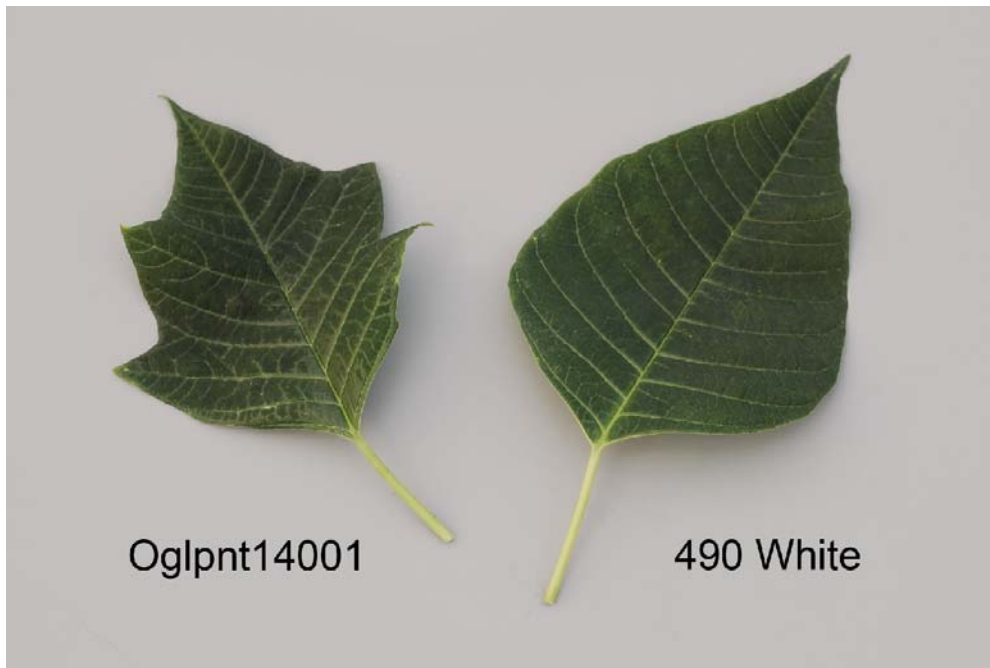
*reference variety



Poinsettia: 'Oglpnt14001' (left) with reference variety '490 White' (right)



Poinsettia: 'Oglpnt14001' (left) with reference variety '490 White' (right)



Poinsettia: 'Oglpnt14001' (left) with reference variety '490 White' (right)

Proposed denomination: 'PER10606'
Trade name: Freedom Early White
Application number: 07-5966
Application date: 2007/07/13
Applicant: Paul Ecke Ranch, Inc., Encinitas, California, United States of America
Agent in Canada: BioFlora Inc., St. Thomas, Ontario
Breeder: Ruth Kobayashi, Paul Ecke Ranch, Inc., Carlsbad, California, United States of America

Variety used for comparison: 'Peterstar White'

Summary: 'PER10606' has light yellow bract colour while 'Peterstar White' has yellow green bract colour. The bract of 'PER10606' has medium rugosity between the veins while 'Peterstar White' has absent or weak rugosity.

Description:

PLANT: medium number of branches

STEM: weak to medium green at middle third, absent or very weak anthocyanin colouration at middle third, absent or weak anthocyanin on upper and lower parts

LEAF: ovate shape, wedge-shaped to rounded base, upper side with strong to very strong green colour, green main vein, none or few shallow lobes, absent or weak curvature of main vein

PETIOLE: weak green colour on upper side, absent or very weak anthocyanin colouration on upper side, absent or weak anthocyanin on lower side

TRANSITIONAL LEAVES: few partly bract coloured leaf blades, few fully bract coloured leaf blades, absent or weak lobing, medium curvature along main vein, many large coloured bracts

BRACTS: medium number of small coloured bracts, ovate shape, upper side light yellow (RHS 5D), spotting absent or very weak on upper side, lower side light yellow (RHS 5D), no folding along main vein, no twisting, medium rugosity between veins

CYATHIUM GLANDS: medium size, yellow, no deformation.

Origin and Breeding: ‘PER10606’ was discovered at the Paul Ecke Ranch in Encinitas, California, USA in August 2004. The variety was selected for its very early bloom date, moderately vigorous growth habit, creamy white bract colour and dark green foliage.

Tests and Trials: Trials for ‘PER10606’ were conducted in a greenhouse in St. Catharines, Ontario. The trial included a total of 25 plants each of the candidate variety and reference variety. All plants were grown from rooted cuttings and transplanted into 15 cm pots on July 30, 2009. Plants were spaced 30 cm apart from the pot centre. Observations and measurements were taken from 10 plants of each variety on November 30, 2009. All colour determinations were made using the 2001 Royal Horticultural Society Colour Chart.

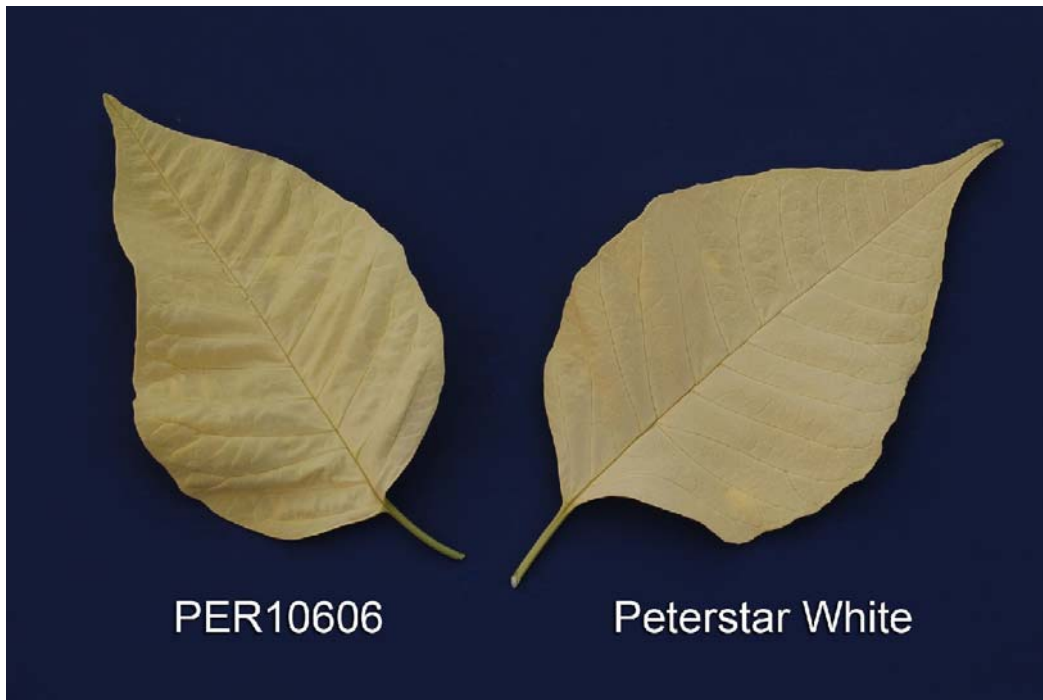
Comparison table for ‘PER10606’

	‘PER10606’	‘Peterstar White’*
<i>Colour of bract (RHS)</i>		
upper side	5D	2D
lower side	5D	2D

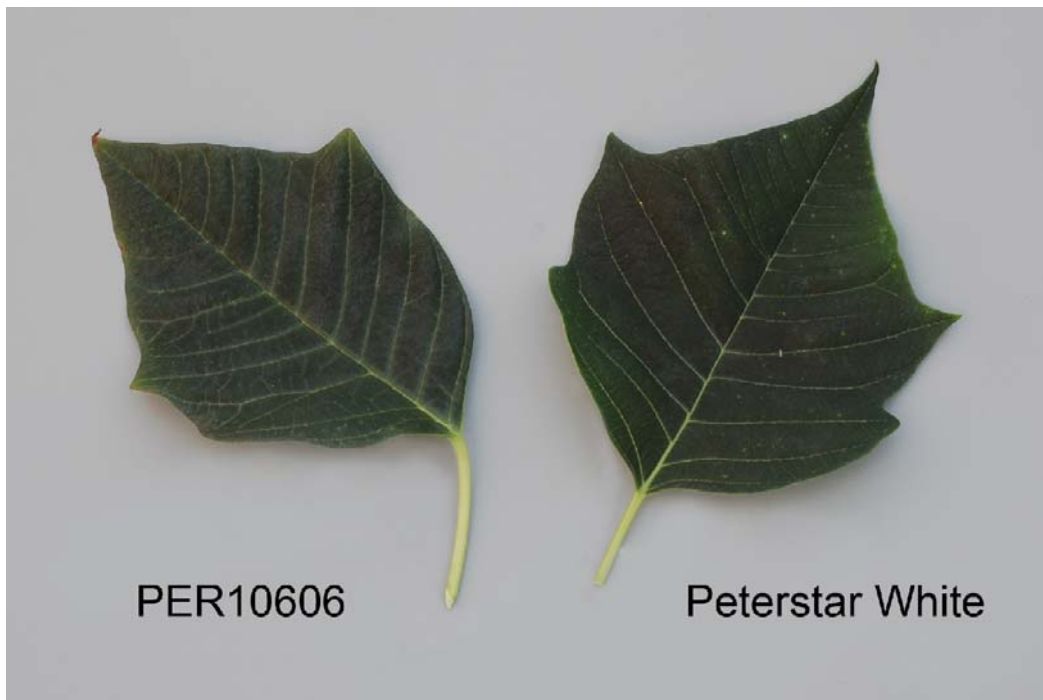
*reference variety



Poinsettia: ‘PER10606’ (left) with reference variety ‘Peterstar White’ (right)



Poinsettia: 'PER10606' (left) with reference variety 'Peterstar White' (right)



Poinsettia: 'PER10606' (left) with reference variety 'Peterstar White' (right)

Proposed denomination:	'PER11406'
Trade name:	Winter Blush
Application number:	07-5968
Application date:	2007/07/13
Applicant:	Paul Ecke Ranch, Inc., Encinitas, California, United States of America
Agent in Canada:	BioFlora Inc., St. Thomas, Ontario
Breeder:	Ruth Kobayashi, Paul Ecke Ranch, Inc., Carlsbad, California, United States of America

Variety used for comparison: 'PER10603' (Enduring Marble)

Summary: 'PER11406' has absent or few leaf lobes while 'PER10603' has a medium number of leaf lobes. The depth of the deepest leaf sinus is very shallow for 'PER11406' while it is medium in depth for 'PER10603'. The upper side of the bract is yellow green with purple red to light blue pink secondary colour for 'PER11406' while the bract of 'PER10603' is yellow green with light red pink secondary colour. The bract of 'PER11406' has medium rugosity between the veins while the bract of 'PER10603' has weak rugosity.

Description:

PLANT: few to medium number of branches

STEM: medium green at middle third, absent or very weak anthocyanin colouration at middle third, weak to medium anthocyanin colouration on upper and lower parts

LEAF: ovate shape, rounded base, upper side with very strong green colour, green main vein, none or few very shallow lobes, absent or weak curvature of main vein

PETIOLE: weak green colour on upper side, absent or very weak anthocyanin colouration on upper side, no anthocyanin on lower side

TRANSITIONAL LEAVES: few partly bract coloured leaf blades, few fully bract coloured leaf blades, absent or weak lobing, absent or weak curvature along main vein

BRACTS: many large coloured bracts, medium number of small coloured bracts, ovate shape, upper side yellow green (RHS 1D) with purple red (RHS 54C) to light blue pink (RHS 54D) secondary colour and shades of dark pink red (RHS 51A-B), spotting absent or very weak on upper side, lower side yellow green (RHS 1D) with red pink (RHS 51D) secondary colour and purple red (RHS 54C) tertiary colour near main vein, no folding along main vein, no twisting, medium rugosity between veins

CYATHIUM GLANDS: medium size, yellow, no deformation.

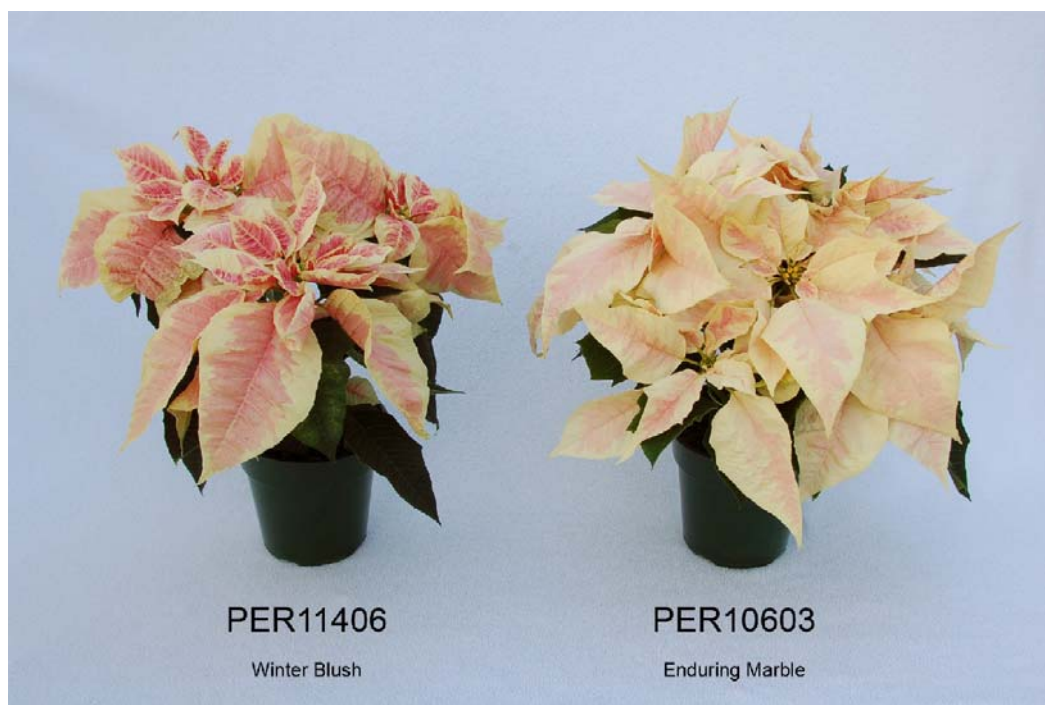
Origin and Breeding: 'PER11406' was discovered at the Paul Ecke Ranch in Encinitas, California, USA in December 2005. The variety was selected for its vigorous growth habit, marble bract colour and dark green foliage.

Tests and Trials: Trials for 'PER11406' were conducted in a greenhouse in St. Catharines, Ontario. The trial included a total of 25 plants each of the candidate variety and reference variety. All plants were grown from rooted cuttings and transplanted into 15 cm pots on July 30, 2009. Plants were spaced 30 cm apart from the pot centre. Observations and measurements were taken from 10 plants of each variety on November 30, 2009. All colour determinations were made using the 2001 Royal Horticultural Society Colour Chart.

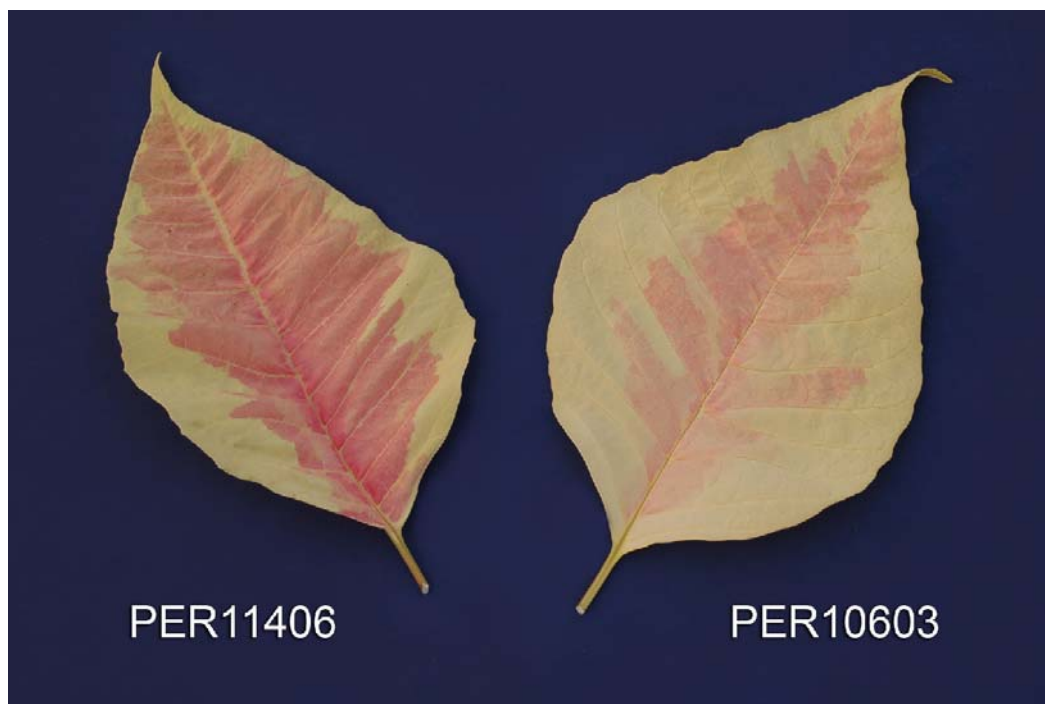
Comparison table for 'PER11406'

	'PER11406'	'PER10603'*
<i>Colour of bract (RHS)</i>		
upper side - main	1D	2D (more yellow than)
upper side - secondary	54C-D, shades of 51A-B	50D, shades of 54C
lower side - main	1D	2D (more yellow than)
lower side - secondary	51D	54D
lower side - tertiary	54C	50C

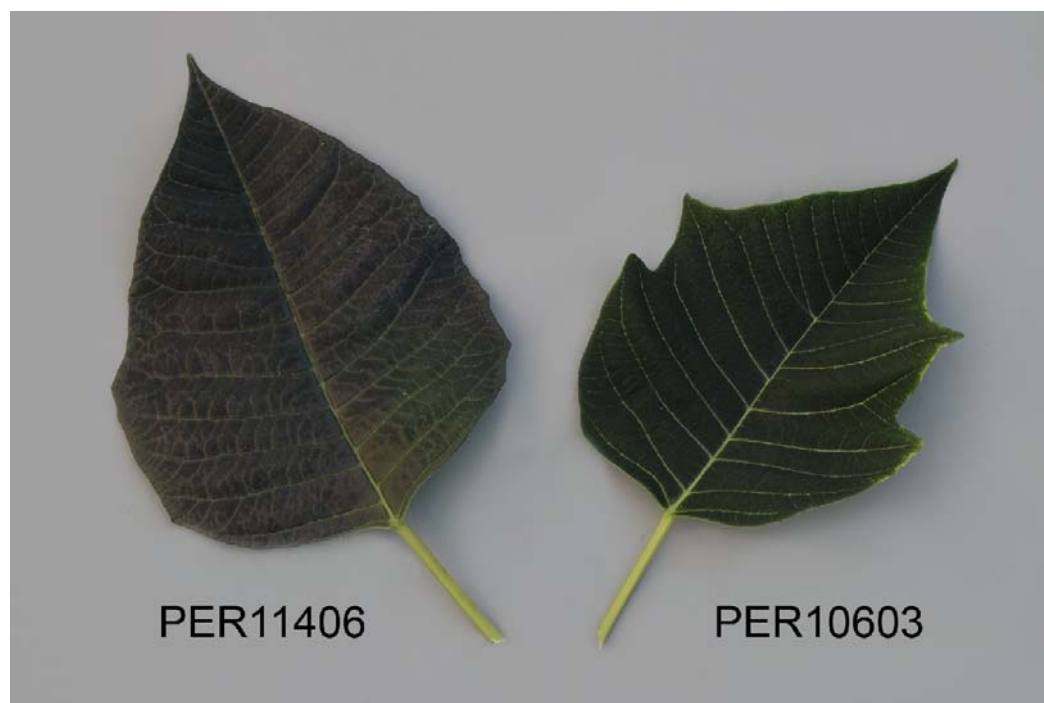
*reference variety



Poinsettia: 'PER11406' (left) with reference variety 'PER10603' (right)



Poinsettia: 'PER11406' (left) with reference variety 'PER10603' (right)



Poinsettia: 'PER11406' (left) with reference variety 'PER10603' (right)

Proposed denomination:	'PER306'
Trade name:	Classic Marble
Application number:	07-5958
Application date:	2007/07/13
Applicant:	Paul Ecke Ranch, Inc., Encinitas, California, United States of America
Agent in Canada:	BioFlora Inc., St. Thomas, Ontario
Breeder:	Ruth Kobayashi, Paul Ecke Ranch, Inc., Carlsbad, California, United States of America

Variety used for comparison: 'PER10603' (Enduring Marble)

Summary: *'PER306' has a wider plant width than 'PER10603'. 'PER306' has a few shallow leaf lobes while 'PER10603' has a medium number of medium depth lobes. 'PER306' has a lower number of bract coloured leaf blades than 'PER10603'. 'PER306' has weak twisting of the bracts while 'PER10603' has no twisting.*

Description:

PLANT: many branches

STEM: medium green at middle third, absent or very weak anthocyanin colouration at middle third, no anthocyanin on upper and lower parts

LEAF: ovate shape, rounded and truncate base, upper side with strong green colour, green main vein, few shallow lobes, absent or weak curvature of main vein

PETIOLE: weak green colour on upper side, absent or very weak anthocyanin colouration on upper side, absent or weak anthocyanin on lower side

TRANSITIONAL LEAVES: few partly bract coloured leaf blades, few fully bract coloured leaf blades, absent or weak lobing, weak to medium curvature along main vein

BRACTS: many to very many large coloured bracts, many small coloured bracts, ovate shape, upper side yellow green (RHS 2D) with light red pink (darker than RHS 50D) secondary colour and shades of purple red (RHS 54C) near main vein, spotting absent or very weak on upper side, lower side yellow green (RHS 2D) with light blue pink (RHS 54D) secondary colour and purple red (RHS 54C) tertiary colour near main vein, inner bracts folded along main vein, weak twisting, weak to medium rugosity between veins

CYATHIUM GLANDS: medium size, yellow, no deformation.

Origin and Breeding: 'PER306' was discovered at the Paul Ecke Ranch in Encinitas, California, USA in July 2005. The variety was selected for its vigorous growth habit, marble bract colour and dark green foliage.

Tests and Trials: Trials for 'PER306' were conducted in a greenhouse in St. Catharines, Ontario. The trial included a total of 25 plants each of the candidate variety and reference variety. All plants were grown from rooted cuttings and transplanted into 15 cm pots on July 30, 2009. Plants were spaced 30 cm apart from the pot centre. Observations and measurements were taken from 10 plants of each variety on November 30, 2009. All colour determinations were made using the 2001 Royal Horticultural Society Colour Chart.

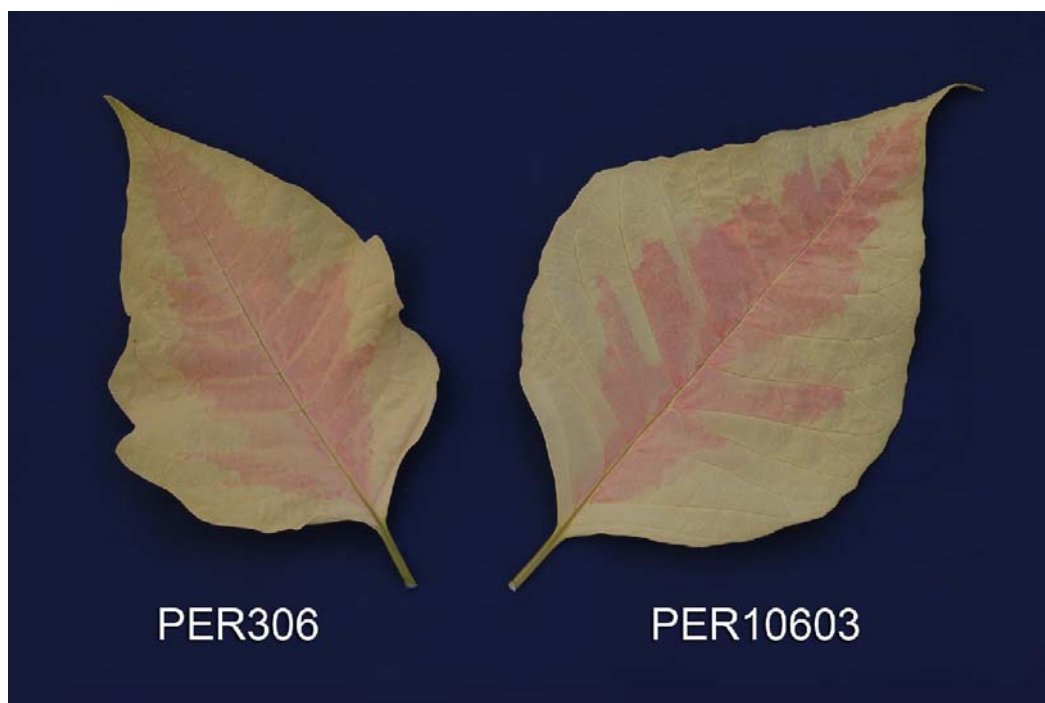
Comparison table for 'PER306'

	'PER306'	'PER10603**'
<i>Plant width (cm)</i>		
mean	60.0	51.8
std. deviation	3.86	1.99
<i>Number of bract coloured leaf blades</i>		
mean	3.0	4.8
std. deviation	0.89	1.47

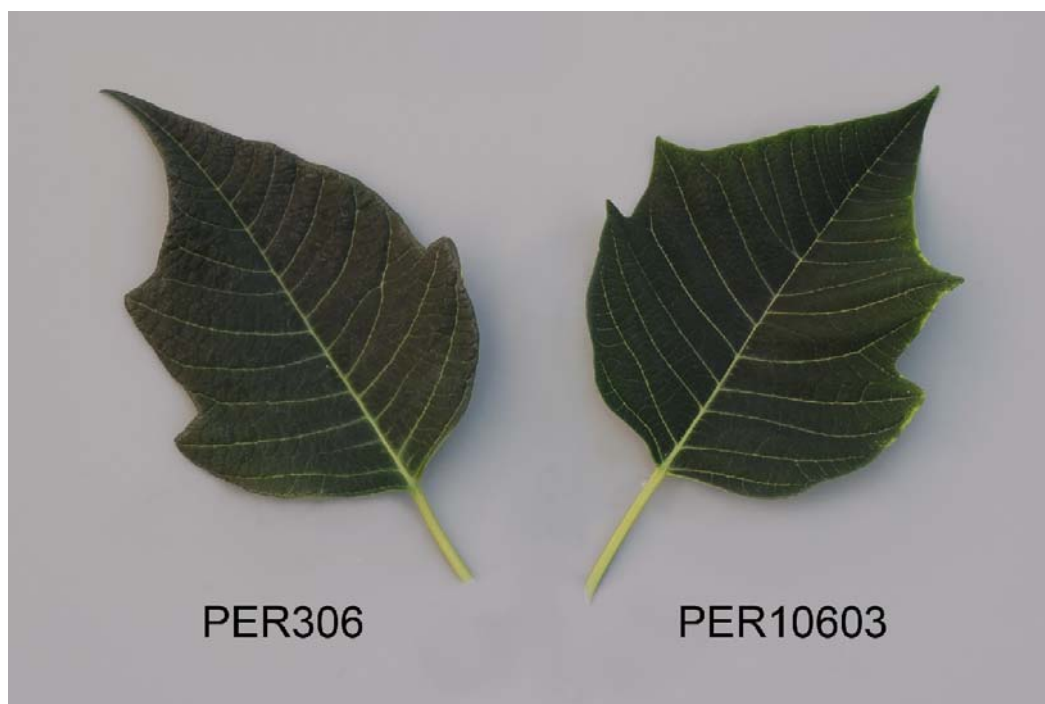
*reference variety



Poinsettia: 'PER306' (left) with reference variety 'PER10603' (right)



Poinsettia: 'PER306' (left) with reference variety 'PER10603' (right)



Poinsettia: 'PER306' (left) with reference variety 'PER10603' (right)