

Technical Report 5A: Summary of Information for Evaluating Impacts of Salmon Farms on Survival of Fraser River Sockeye Salmon errata

As specified in transcript August 25, 2011, p. 77 by Josh Korman:

Report p. 9

Herring lice were less abundant on salmon farms than salmon lice and did not show the same seasonal and interannual patterns. Averaged over all seasons and years, 0.4 motile herring lice were found per fish examined (Table 2a), approximately four-fold lower than the number of salmon lice. Infection rates (# lice/fish examined) were highly variable among fish health subzones and there were no significant trends in infection rates between 2004 and 2010 in spring (slope=-0.009 lice/fish/yr, $r^2=0.02$, $n=7$, $p=0.75$) and throughout the year (slope=-0.010 lice/fish/yr, $r^2=0.08$, $n=7$, $p=0.54$, Fig. 7b). Infection rates were generally highest during summer (Table 2b).

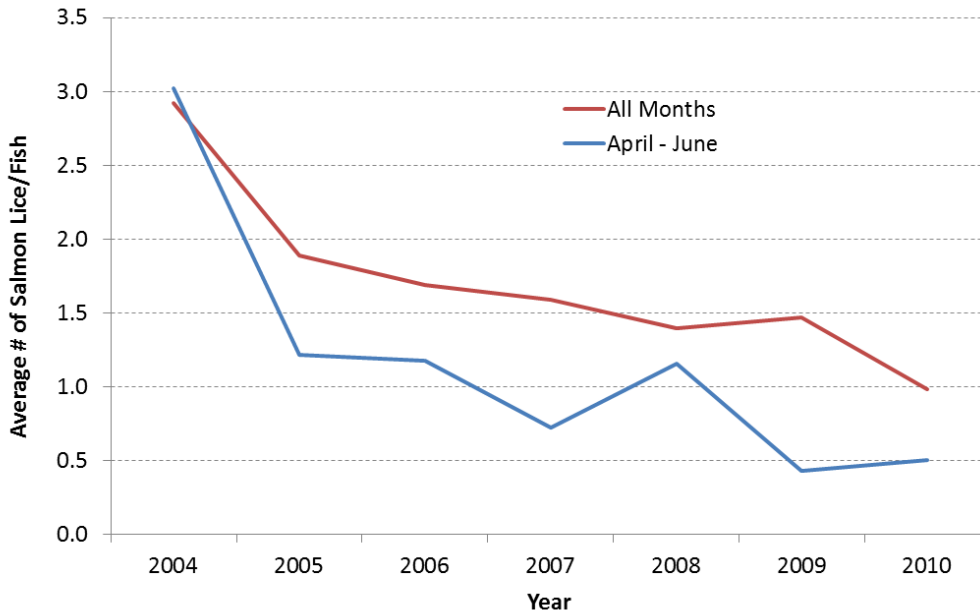
Table 1. Average number of motile herring lice per Atlantic salmon examined from all active salmon farms by fish health zone (a) and by season (b, spring=Apr–June, summer=July–Sep, fall=Nov–Dec, winter=Jan–Mar). See Fig. 2 for the location of fish health zones. “WCVI,” “ECVI,” and “CC” denote the west and east coast of Vancouver Island and the central coast, respectively.

a)

Year	Fish Health Zone						Avg.	
	WCVI		ECVI			CC		
	2-3	2-4	3-1	3-2	3-3	3-4		3-5
2004	0.4	0.0	0.0	0.2	1.0	0.4	0.0	0.5
2005	0.2	0.0	0.0	0.4	0.5	0.2	0.0	0.3
2006	0.2	0.2	0.0	0.7	0.4	0.1	0.2	0.4
2007	0.1	0.2	0.0	0.4	0.3	0.2	0.2	0.3
2008	1.0	0.0	0.0	0.3	0.3	0.3	0.0	0.4
2009	0.2	0.1	0.0	1.1	0.3	0.4	0.0	0.4
2010	0.2	0.2	0.1	0.8	0.4	0.4	0.1	0.4
Avg.	0.3	0.1	0.1	0.6	0.5	0.3	0.1	0.4

b)

Year	Season				Avg.
	Spring	Summer	Fall	Winter	
2004	0.4	0.8	0.4	0.6	0.5
2005	0.4	0.1	0.3	0.5	0.3
2006	0.2	0.7	0.5	0.1	0.4
2007	0.3	0.3	0.2	0.3	0.3
2008	0.1	0.8	0.5	0.1	0.4
2009	0.2	0.4	0.3	0.6	0.4
2010	0.5	0.4	0.0	0.3	0.4
Avg.	0.3	0.5	0.3	0.4	0.4



b)

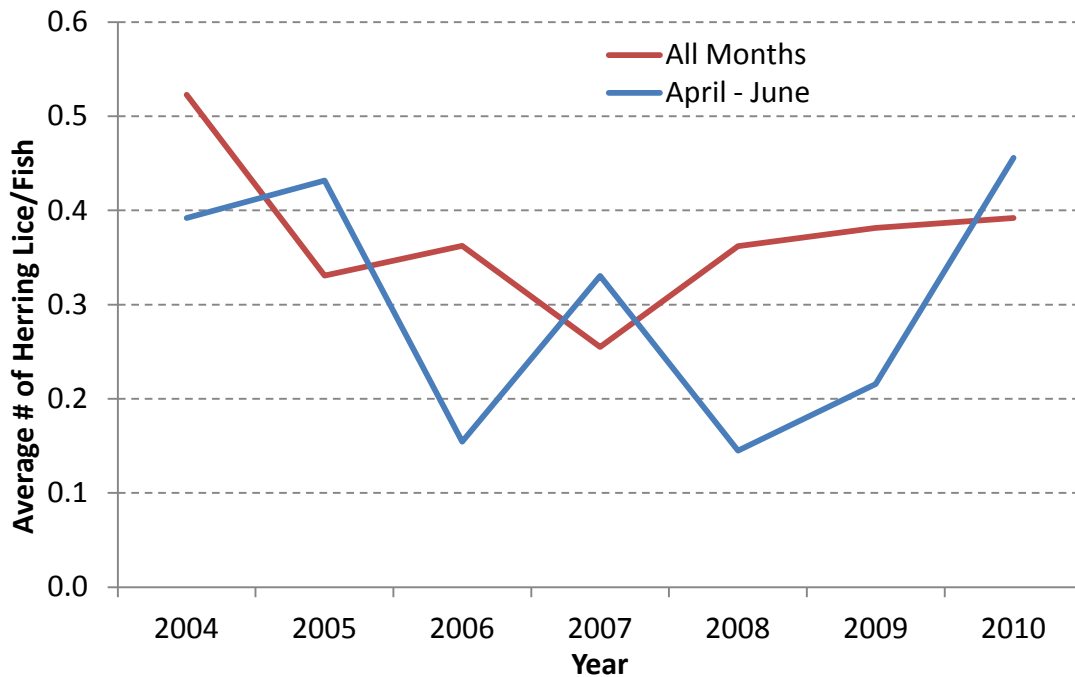


Figure 1. Average number of salmon (a) and herring (b) lice per farmed Atlantic salmon examined by year based on data from all months, and for months in spring (April–June) when Fraser River sockeye that have recently entered the ocean migrate past salmon farms in BC (source: BCSFA database).