

Fraser Sockeye Smolt Survival Estimates

Cultus L: 2004-07

(1 yr old hatchery smolts)

Chilko L: 2010

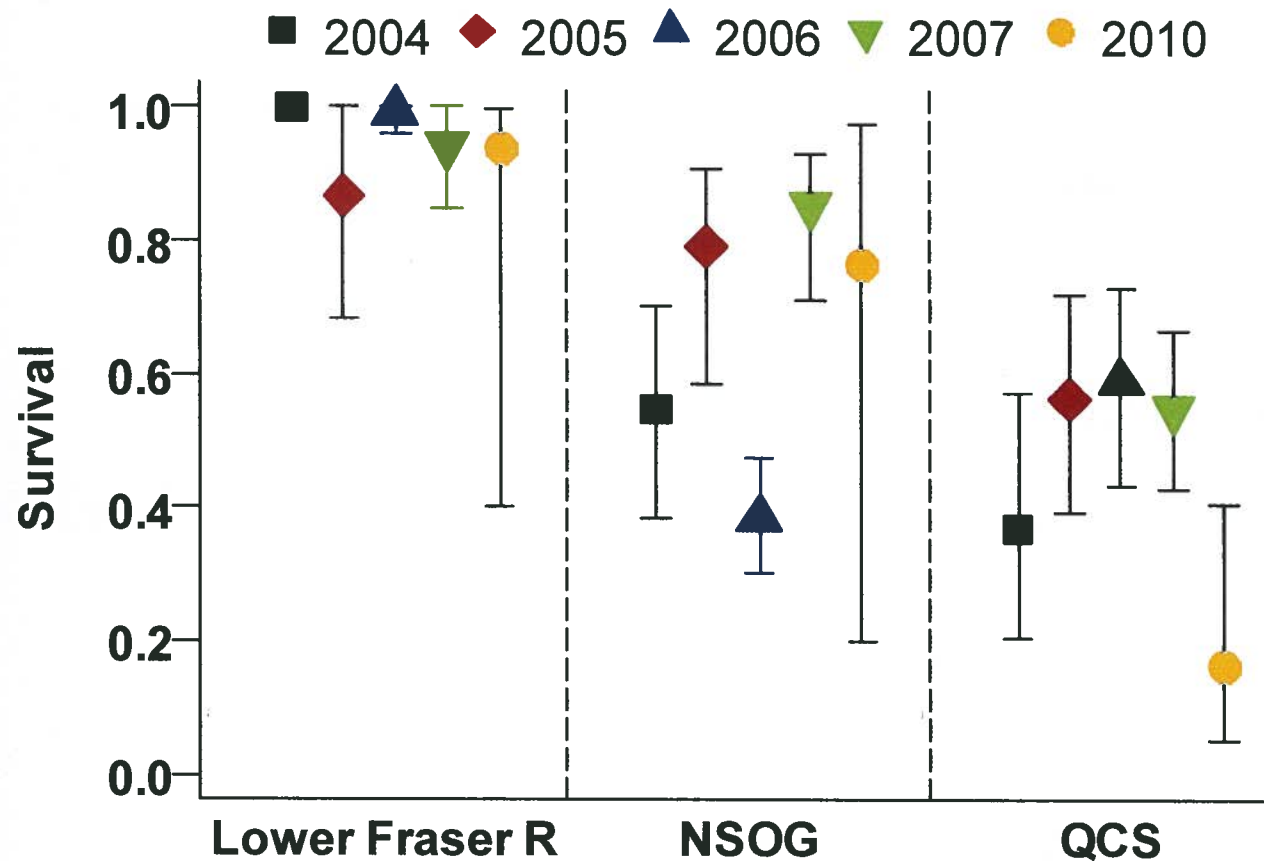
(2 yr old wild smolts)

Fraser: Freshwater survival is from Mission to near the river mouth (70 km)

NSOG: Ocean survival from mouth to N. Strait of Georgia

QCS: Ocean survival from NSOG to Queen Charlotte Strait; includes Johnstone Strait/Discovery Passage & Broughton Archipelago

Note: Fraser freshwater survival is for the common migration path starting at Mission & does not include survival upstream of Mission



2004-07 data from Welch et al (2009). 2010 data from an unpublished UBC & Kintama study, by Drs T. Clark, E. Rechisky, S. Hinch & D. Welch, funded by the Pacific Salmon Foundation.