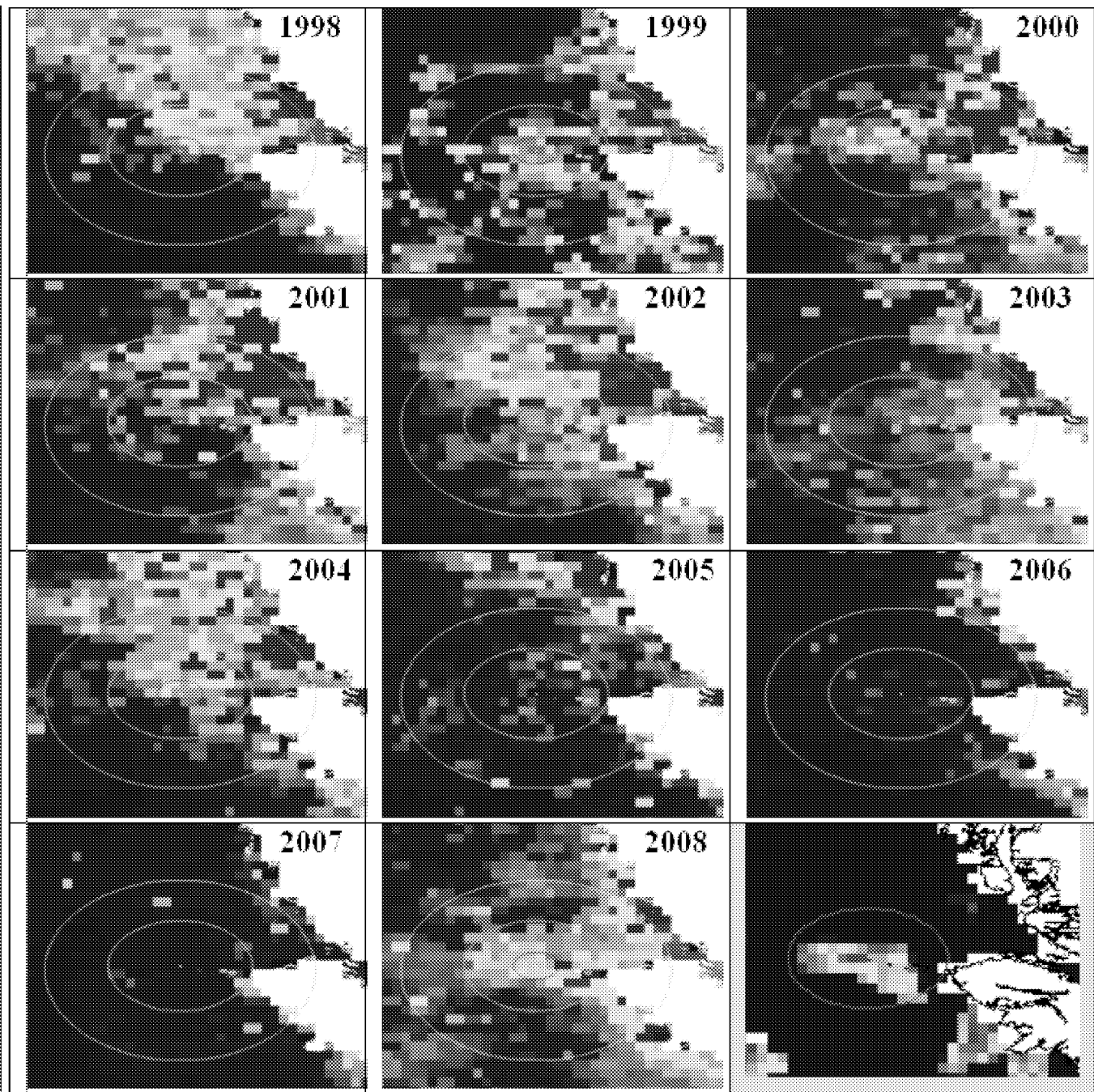


Chlorophyll and seabirds on Triangle Island

Manuscript in
preparation by

Gary Borstad
Bill Crawford
Mark Hipfner
Rick Thomson

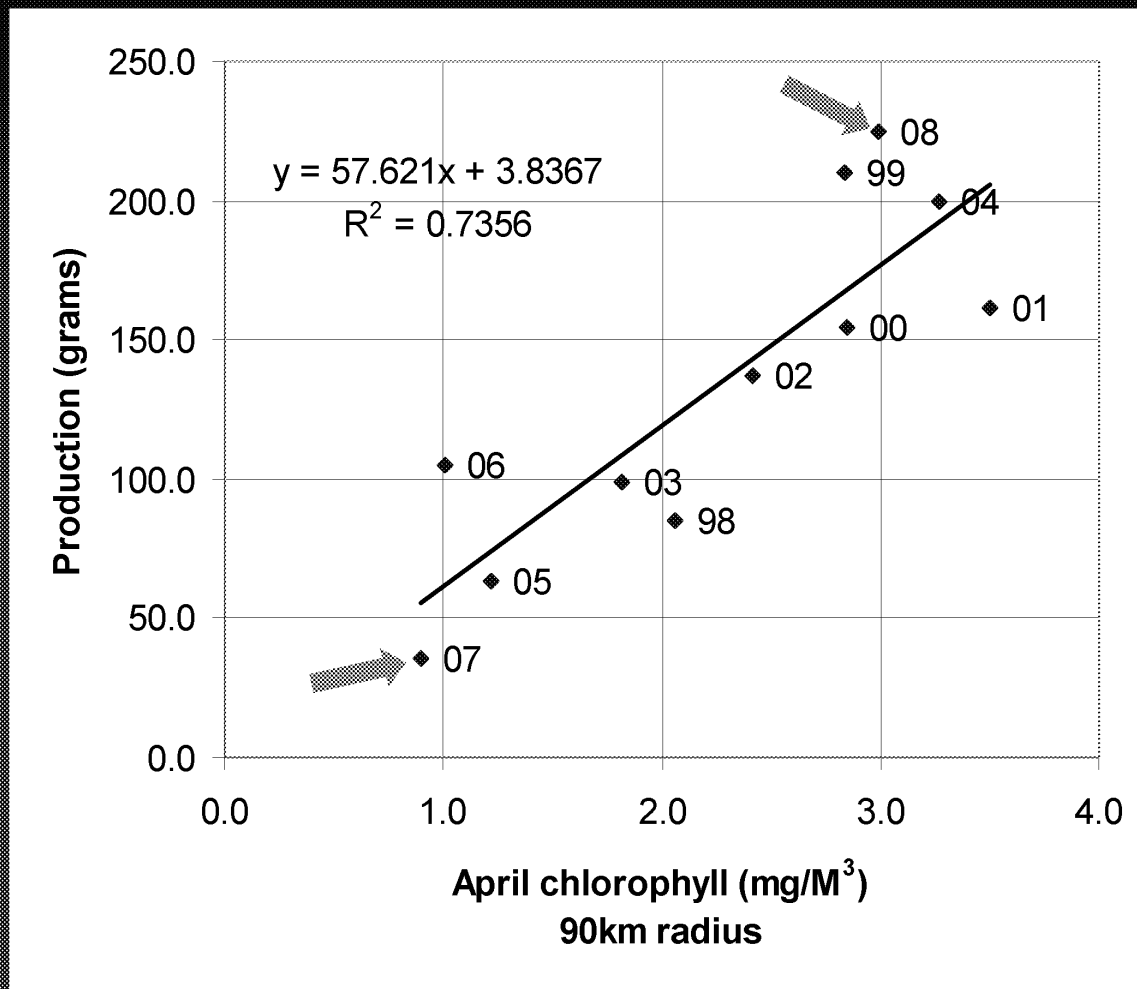
Chlorophyll
concentration
as measured
by satellite in
April of 1998
to 2008.



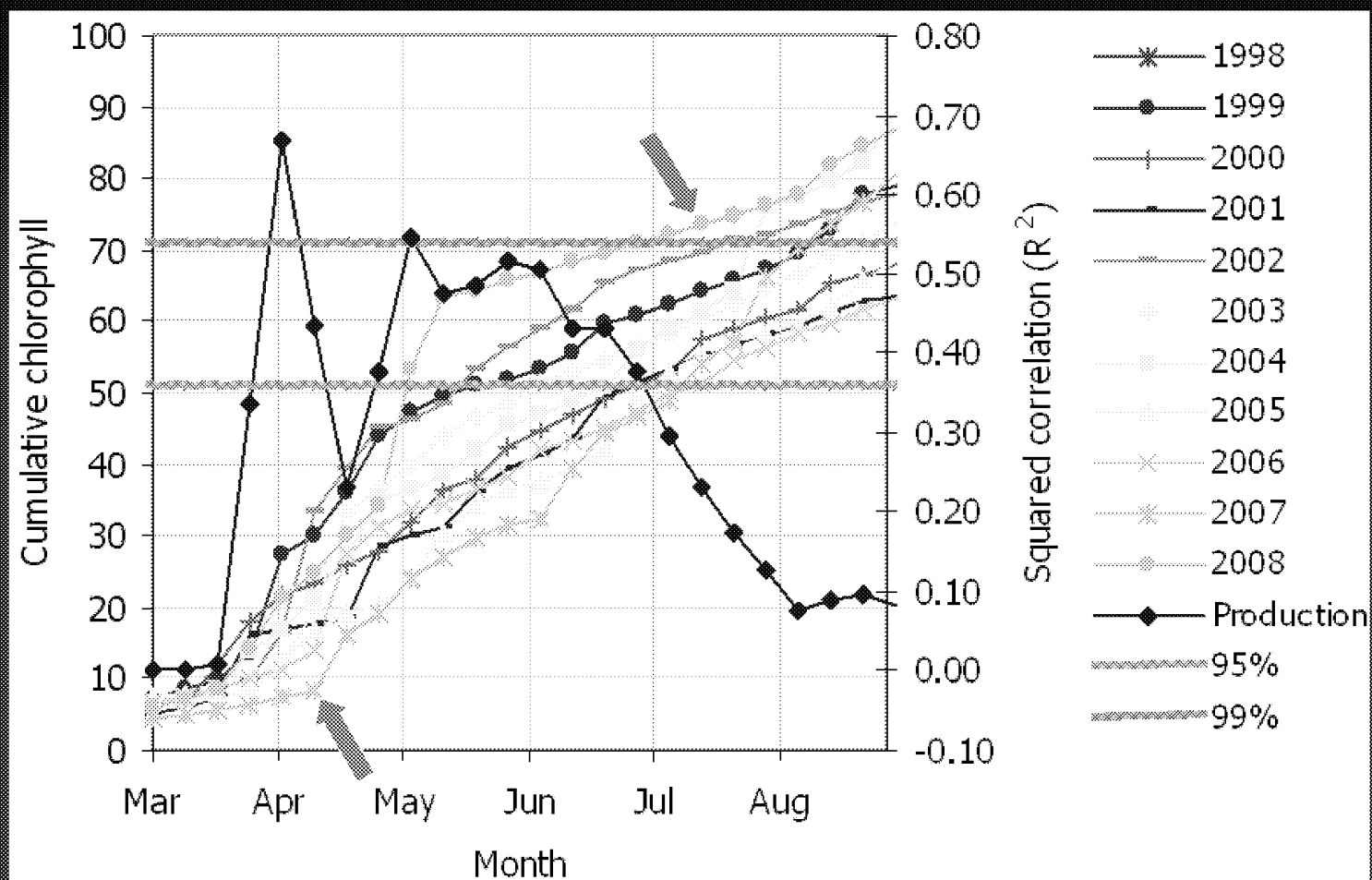
DFO-082989

\\svbcv\anfp01\Cohen-Comm\Personal_Drives-Science\Suite Grant\0 Grant January 3\2. Stock Assessment\c (SG) Presentations\Sockeye Forecasting\2010 forecast\Science meeting talks\Crawford 20090930 PBS.ppt

CAN043618_0001

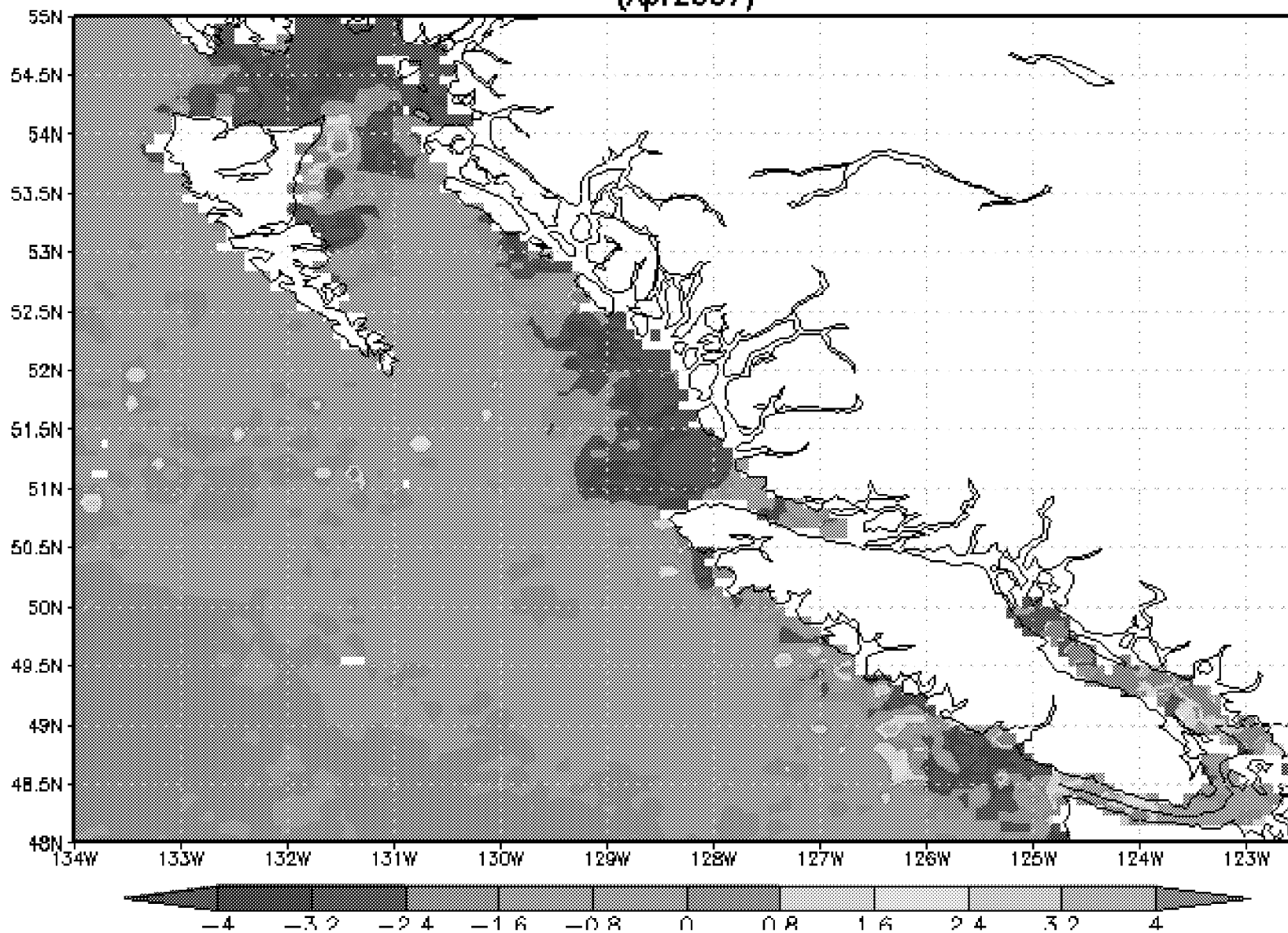


Correlation between fledgling production of rhinoceros auklets on Triangle Island and April chlorophyll in a 90-km radius of this island



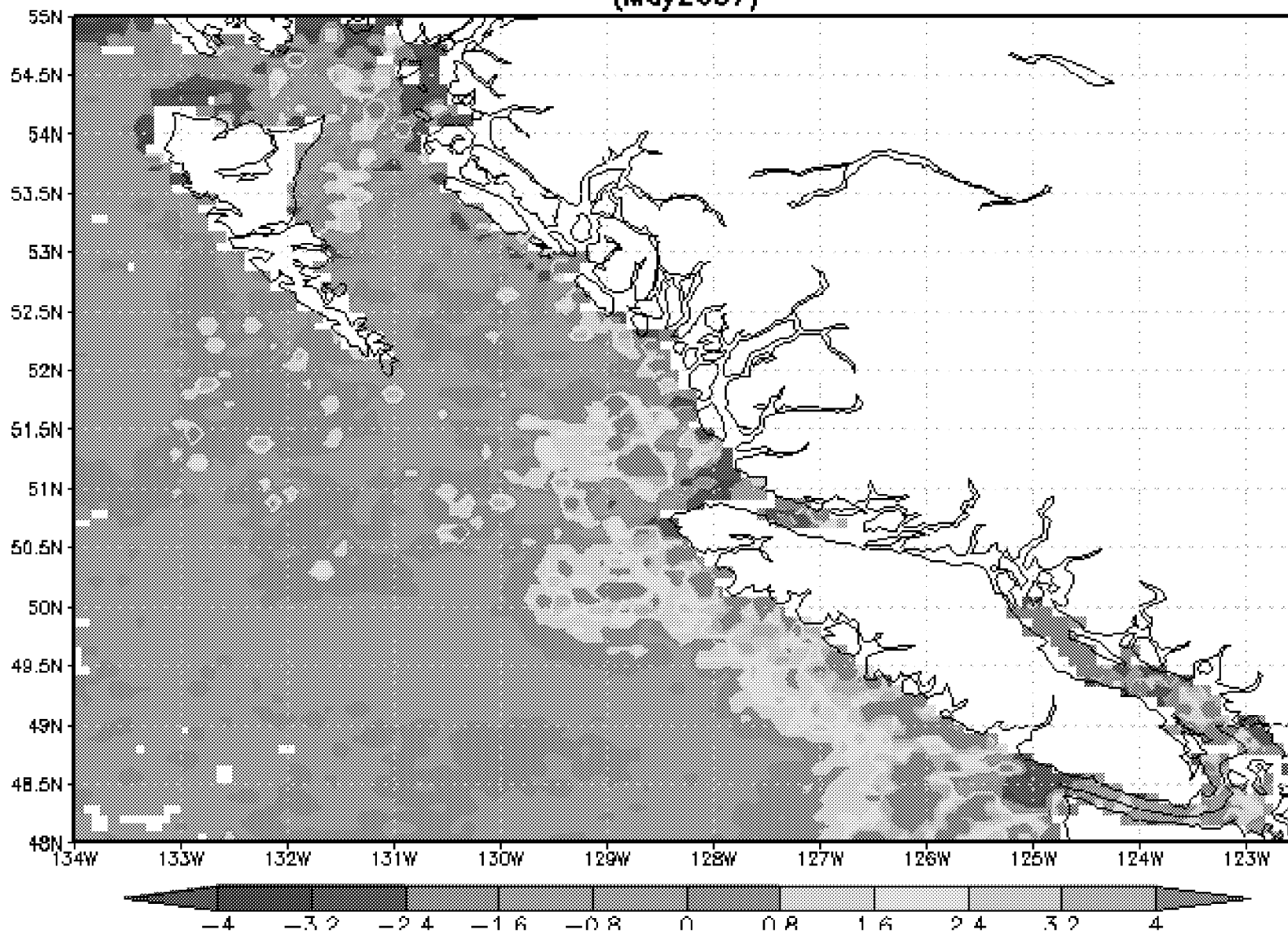
Cumulative chlorophyll in a 15-km radius around Triangle Island. Note the low values for 2007 and high values for 2008.

SWFMOCHLO.005 Anomaly of Chlorophyll a concentration [mg/m³] (Apr2007)



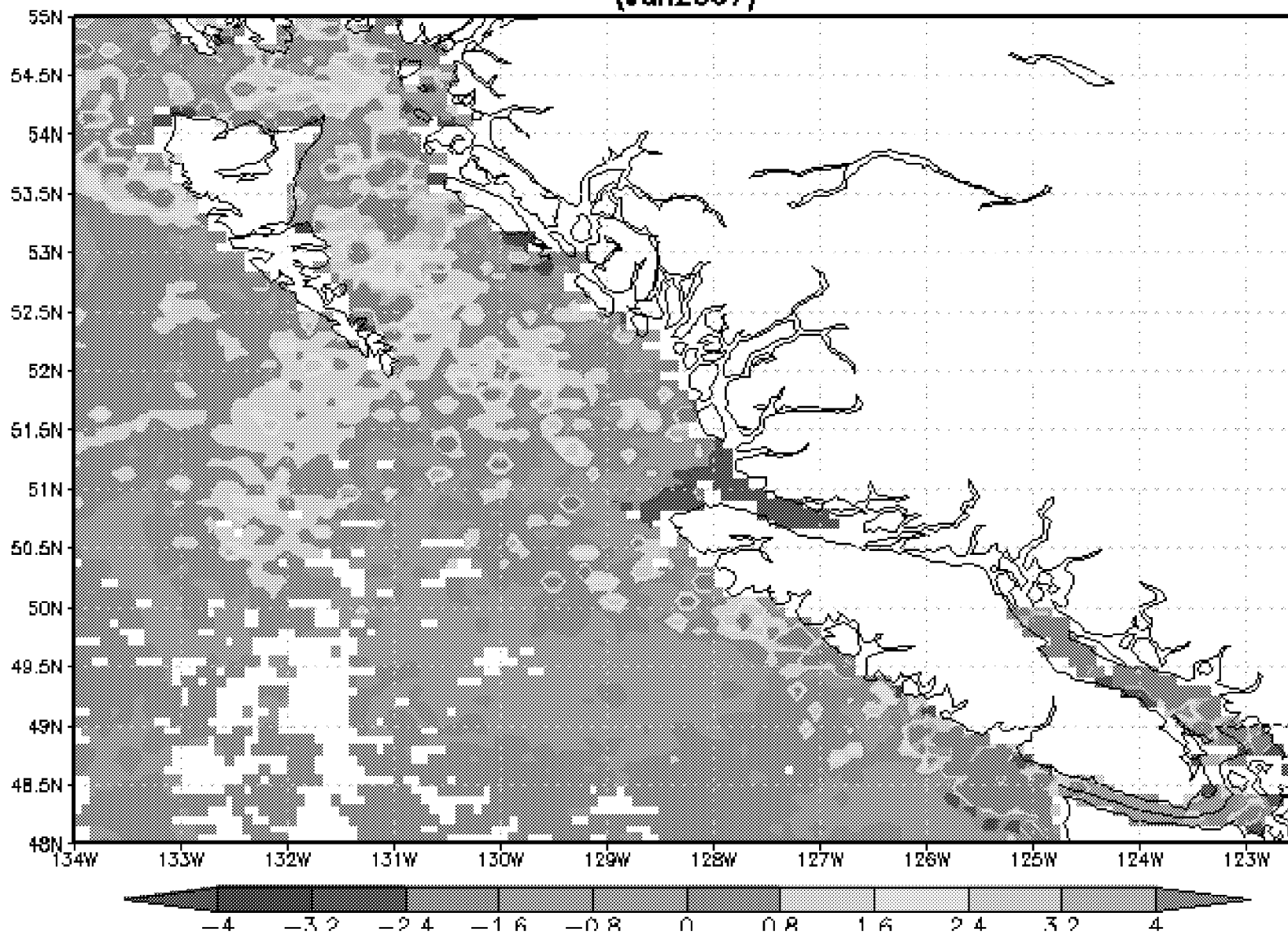
\\svbcv\anfp01\Cohen-Comm\Personal_Drives-Science\S
ue Grant\0 Grant January 3\2. Stock Assessment\c (S
SG) Presentations\Sockeye Forecasting\2010 forecas
t\Science meeting talks\Crawford 20090930 PBS.ppt

SWFMOCHLO.005 Anomaly of Chlorophyll a concentration [mg/m³] (May 2007)



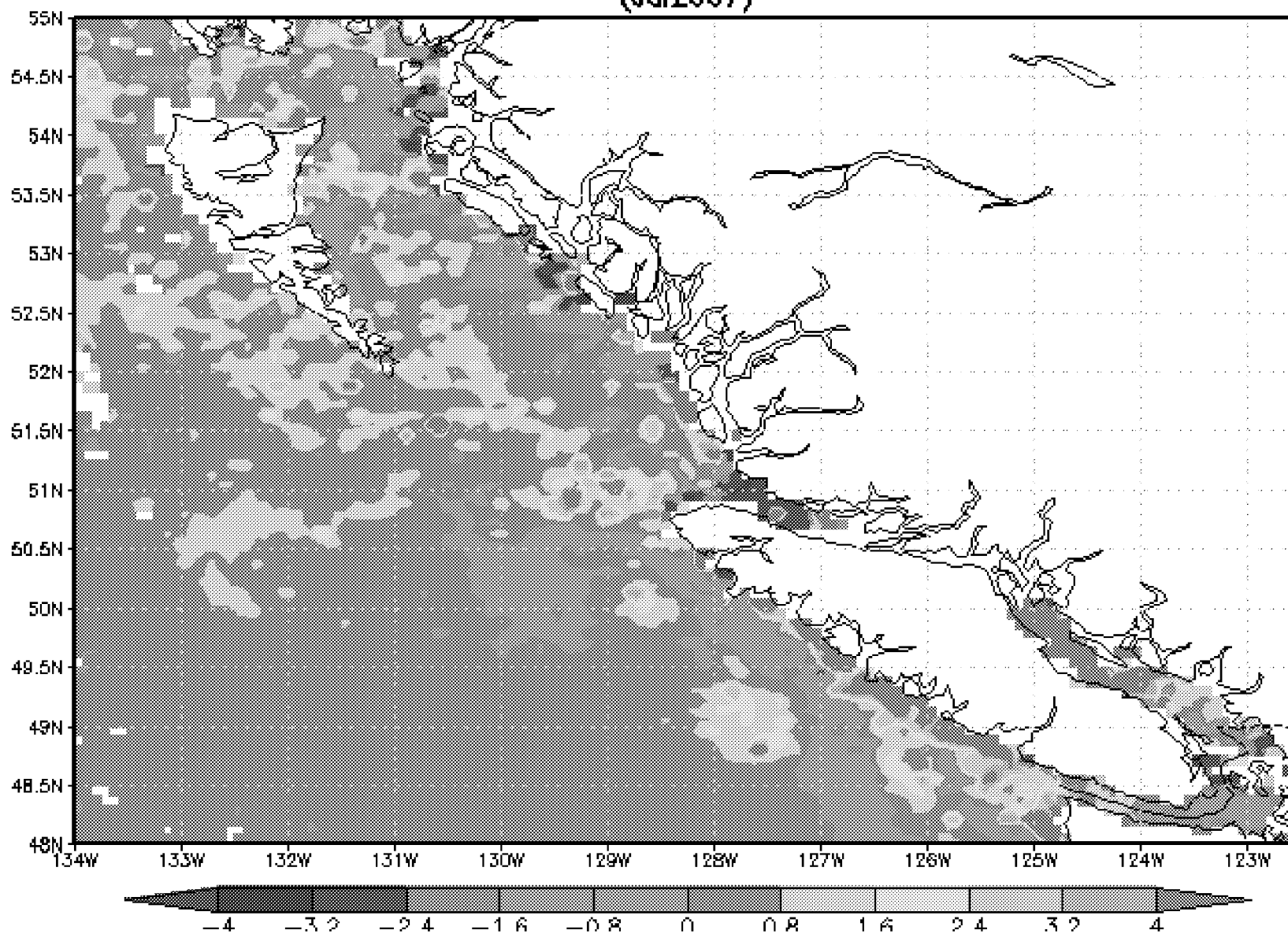
\\svbcv\anfp01\Cohen-Comm\Personal_Drives-Science\S
ue Grant\0 Grant January 3\2. Stock Assessment\c (S
SG) Presentations\Sockeye Forecasting\2010 forecas
t\Science meeting talks\Crawford 20090930 PBS.ppt

SWFMOCHLO.005 Anomaly of Chlorophyll a concentration [mg/m³] (Jun2007)



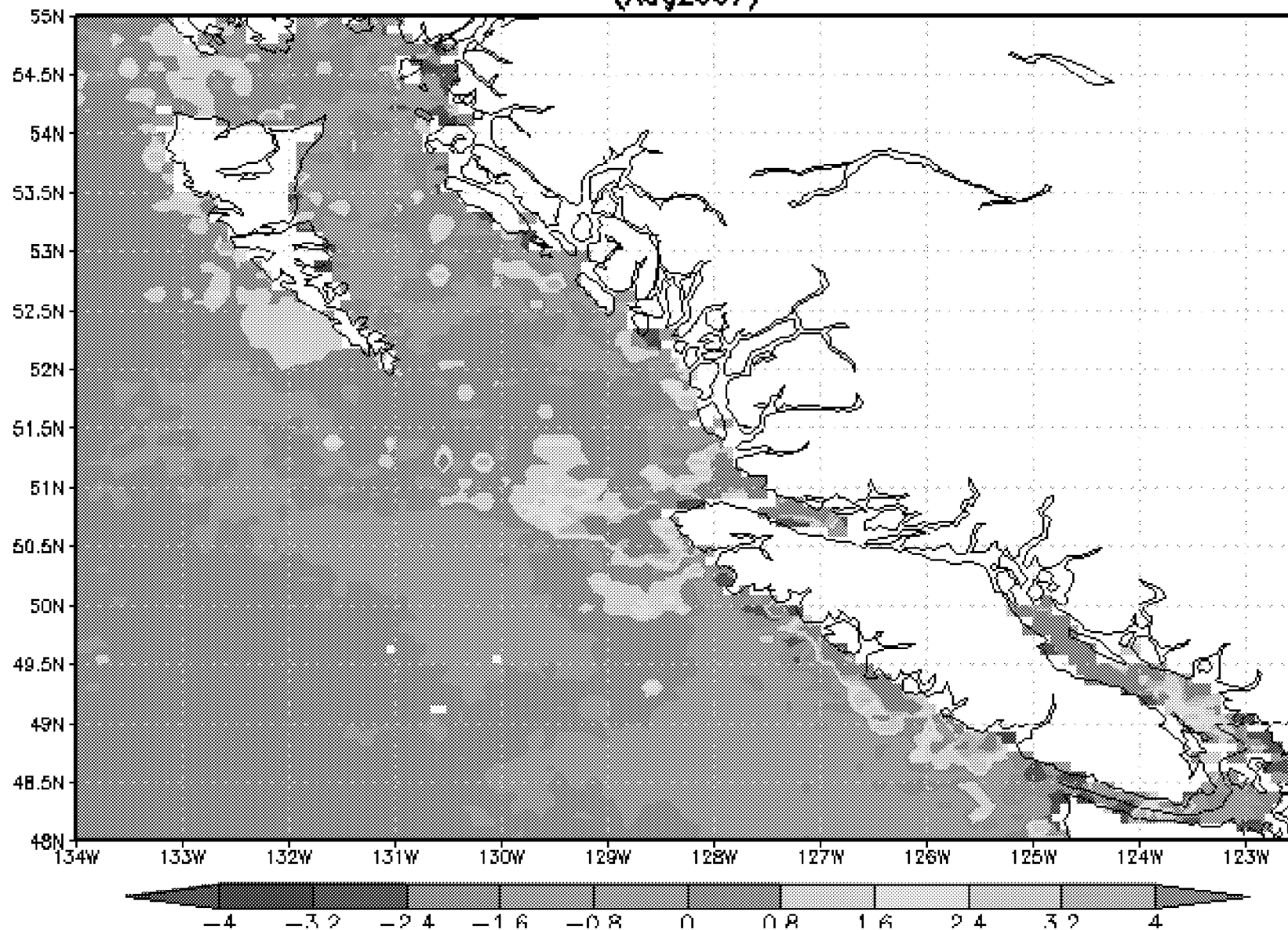
\\svbcvanfp01\Cohen-Comm\Personal_Drives-Science\S
ue Grant\0 Grant January 3\2. Stock Assessment\c (S
SG) Presentations\Sockeye Forecasting\2010 forecas
t\Science meeting talks\Crawford 20090930 PBS.ppt

SWFMOCHLO.005 Anomaly of Chlorophyll a concentration [mg/m³] (Jul2007)



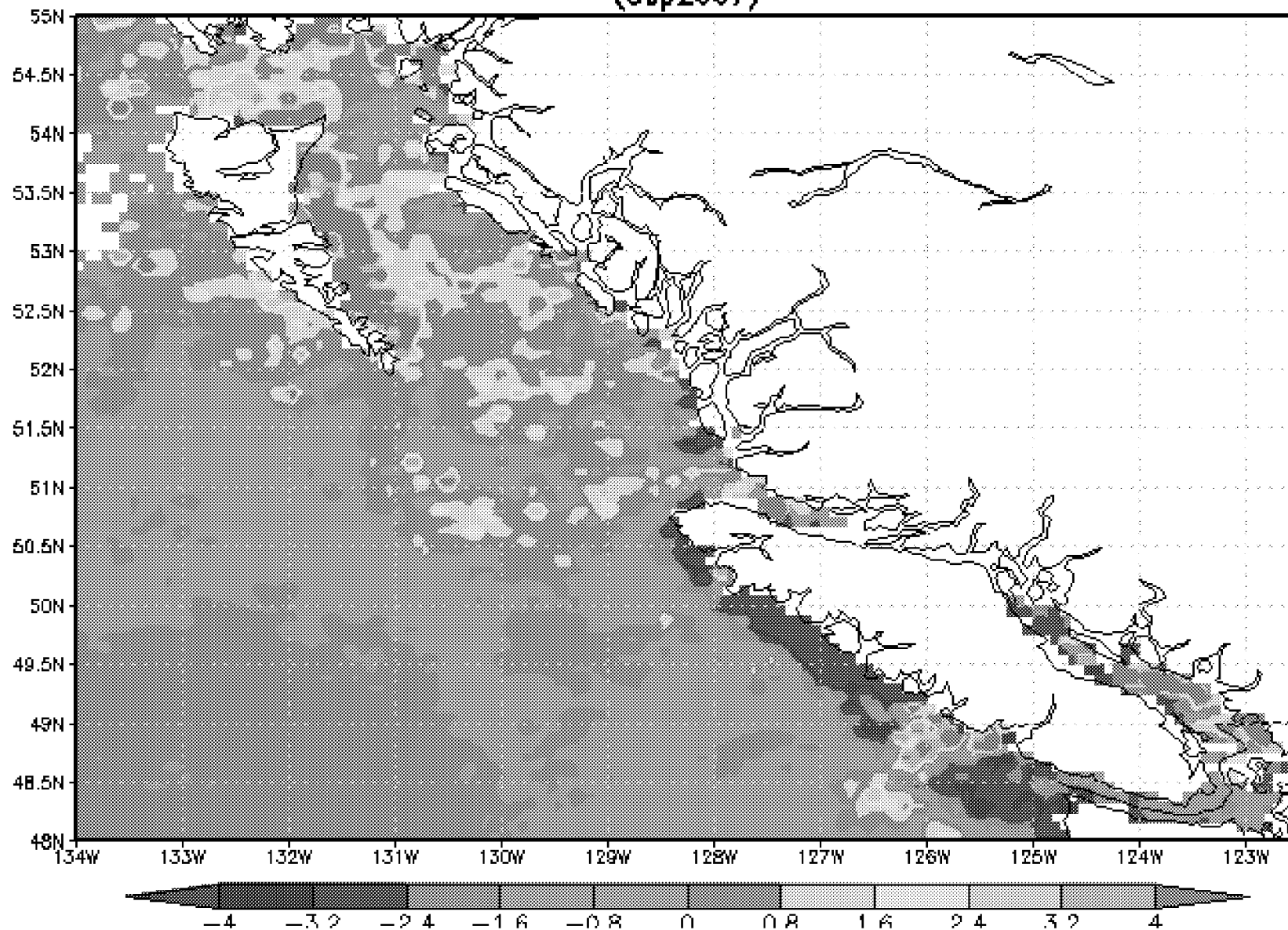
\\svbcv\anfp01\Cohen-Comm\Personal_Drives-Science\Science Grant\0 Grant January 3\2. Stock Assessment\c (SG) Presentations\Sockeye Forecasting\2010 forecast\Science meeting talks\Crawford 20090930 PBS.ppt

SWFMOCHLO.005 Anomaly of Chlorophyll a concentration [mg/m³] (Aug2007)



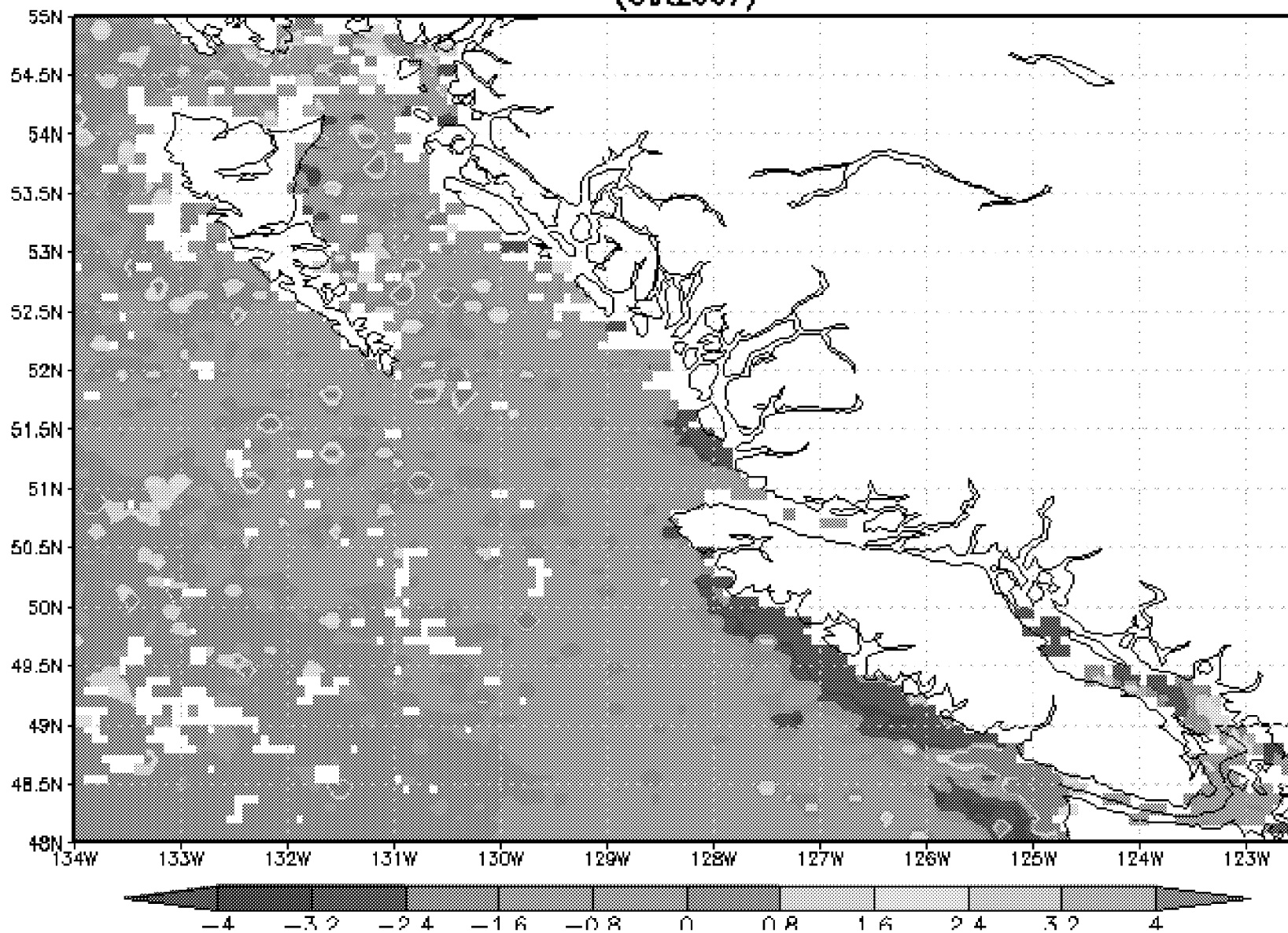
\\svbcv\anfp01\Cohen-Comm\Personal_Drives-Science\S
ue Grant\0 Grant January 3\2. Stock Assessment\c (S
SG) Presentations\Sockeye Forecasting\2010 forecas
t\Science meeting talks\Crawford 20090930 PBS.ppt

SWFMOCHLO.005 Anomaly of Chlorophyll a concentration [mg/m³] (Sep2007)



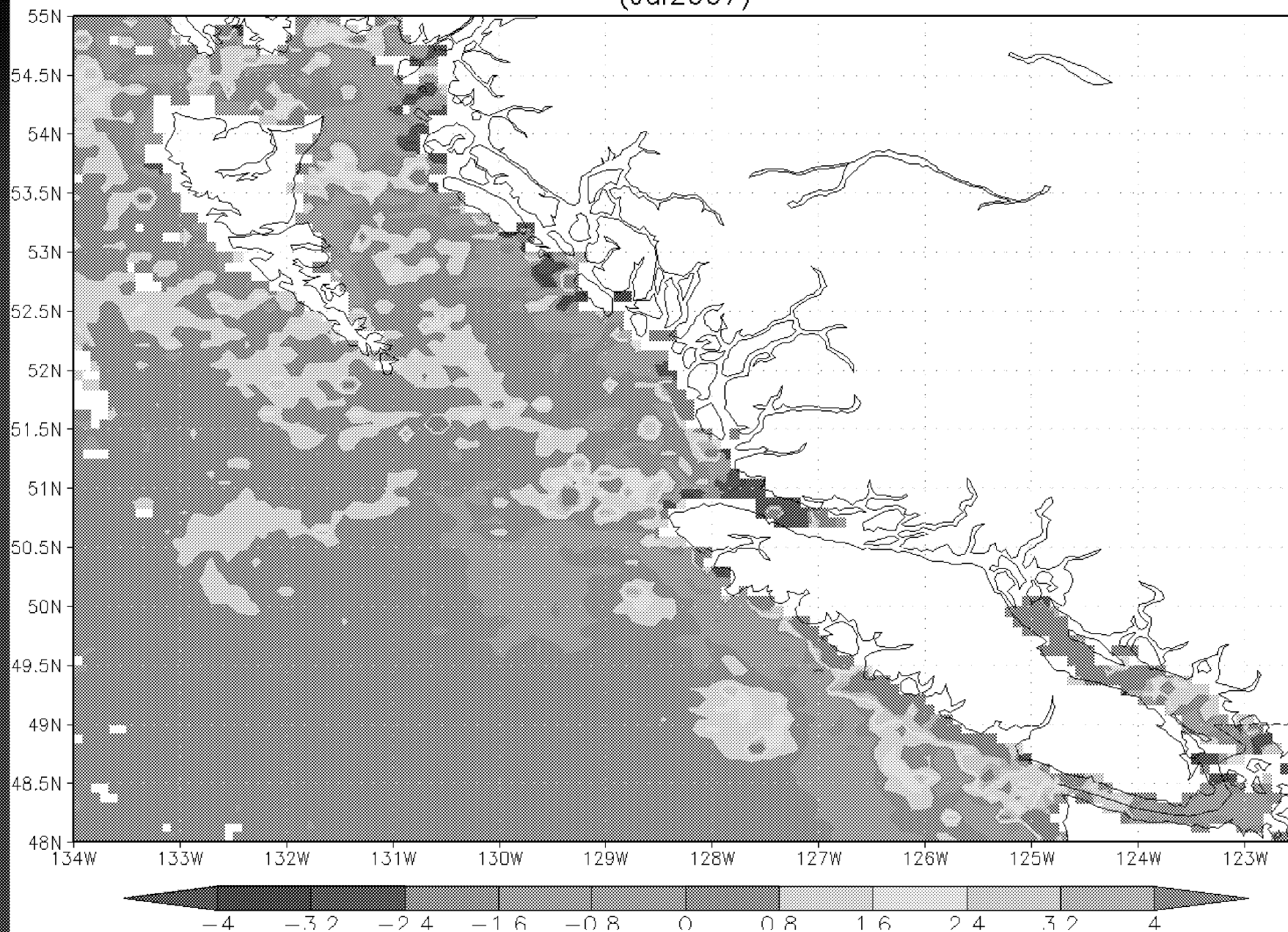
\\svbcv\anfp01\Cohen-Comm\Personal_Drives-Science\Science Grant\0 Grant January 3\2. Stock Assessment\c (SG) Presentations\Sockeye Forecasting\2010 forecast\Science meeting talks\Crawford 20090930 PBS.ppt

SWFMOCHLO.005 Anomaly of Chlorophyll a concentration [mg/m³] (Oct2007)

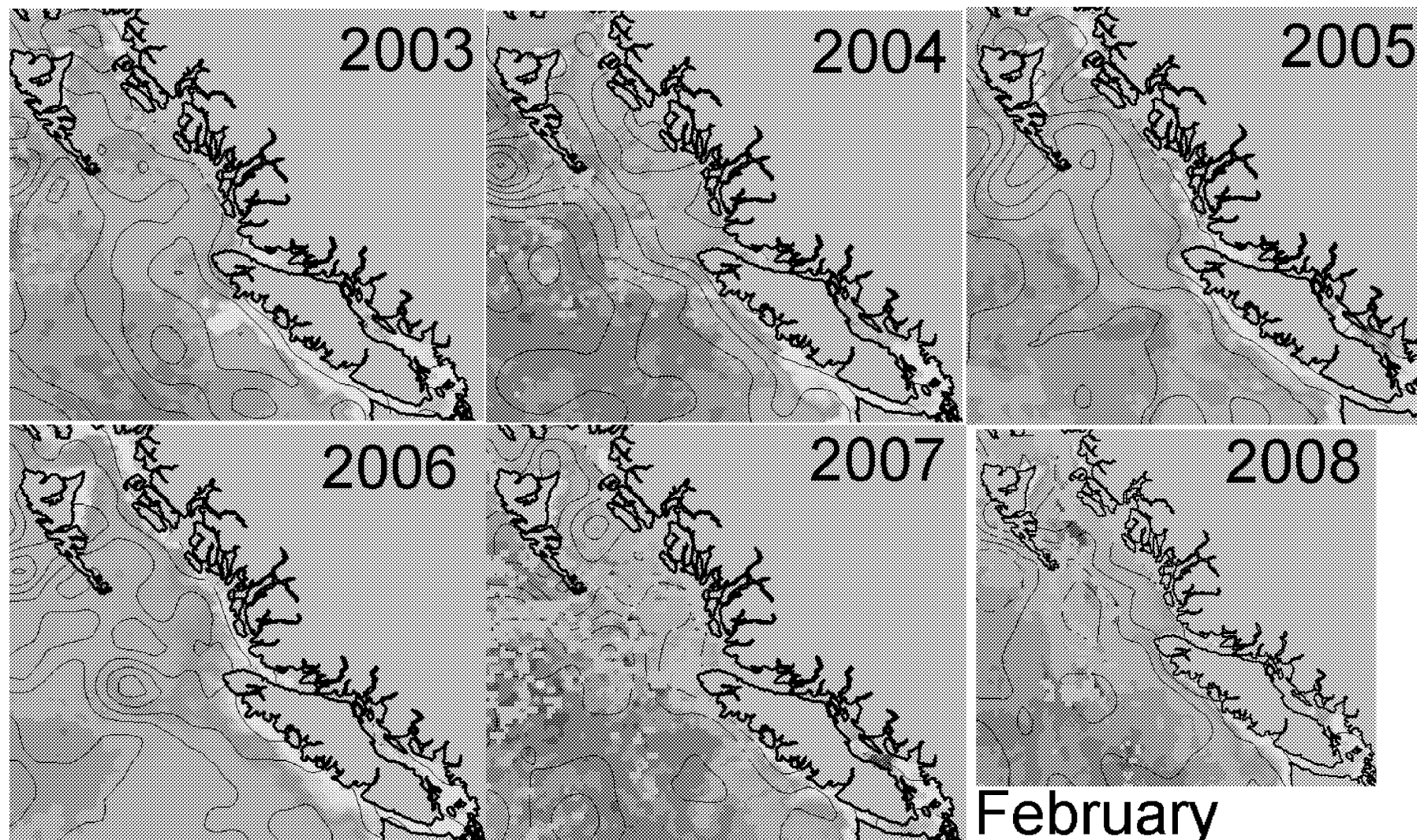


\\svbcv\anfp01\Cohen-Comm\Personal_Drives-Science\Science Grant\0 Grant January 3\2. Stock Assessment\c (SG) Presentations\Sockeye Forecasting\2010 forecast\Science meeting talks\Crawford 20090930 PBS.ppt

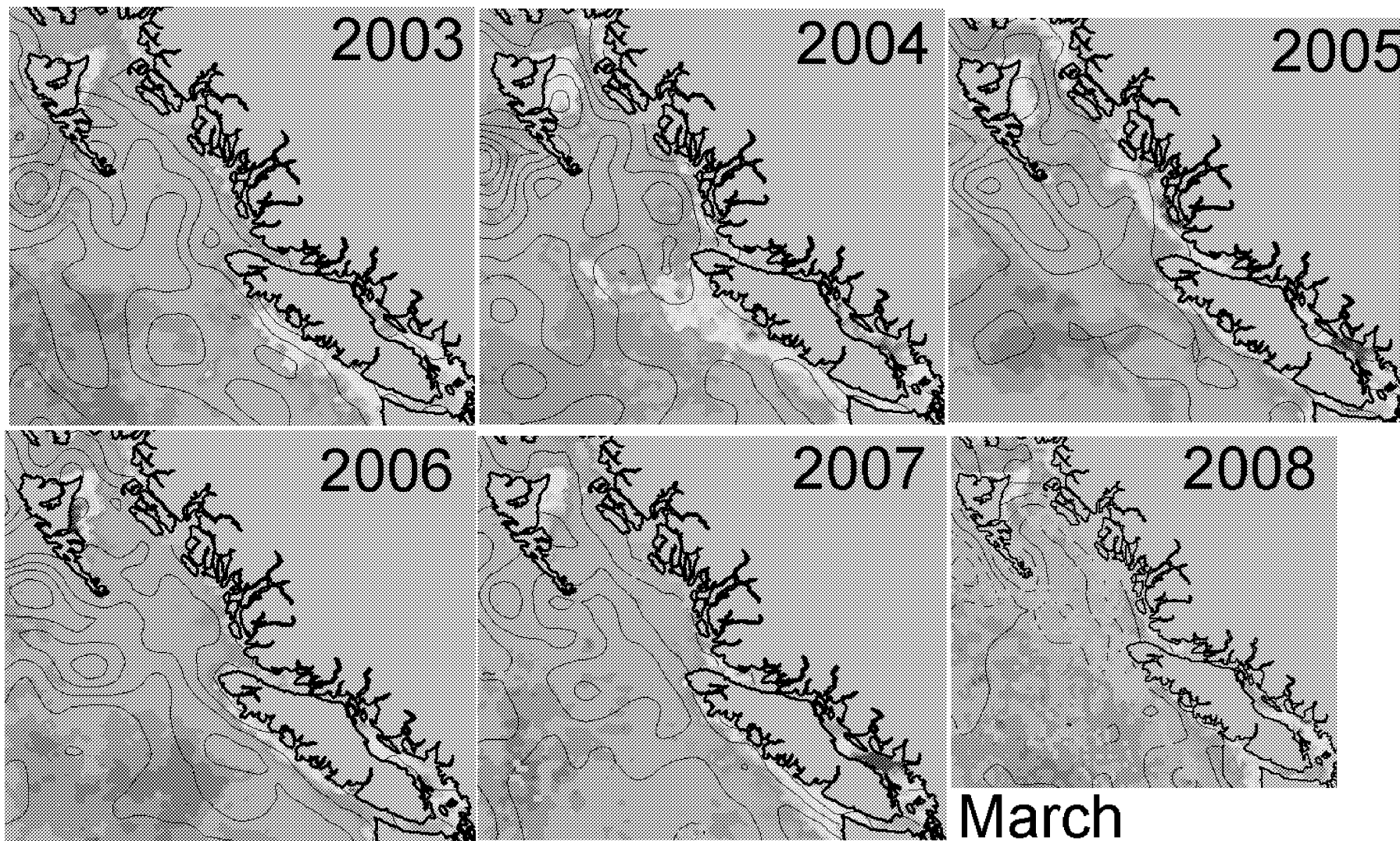
SWFMOCHLO.005 Anomaly of Chlorophyll a concentration [mg/m**3] (Jul2007)



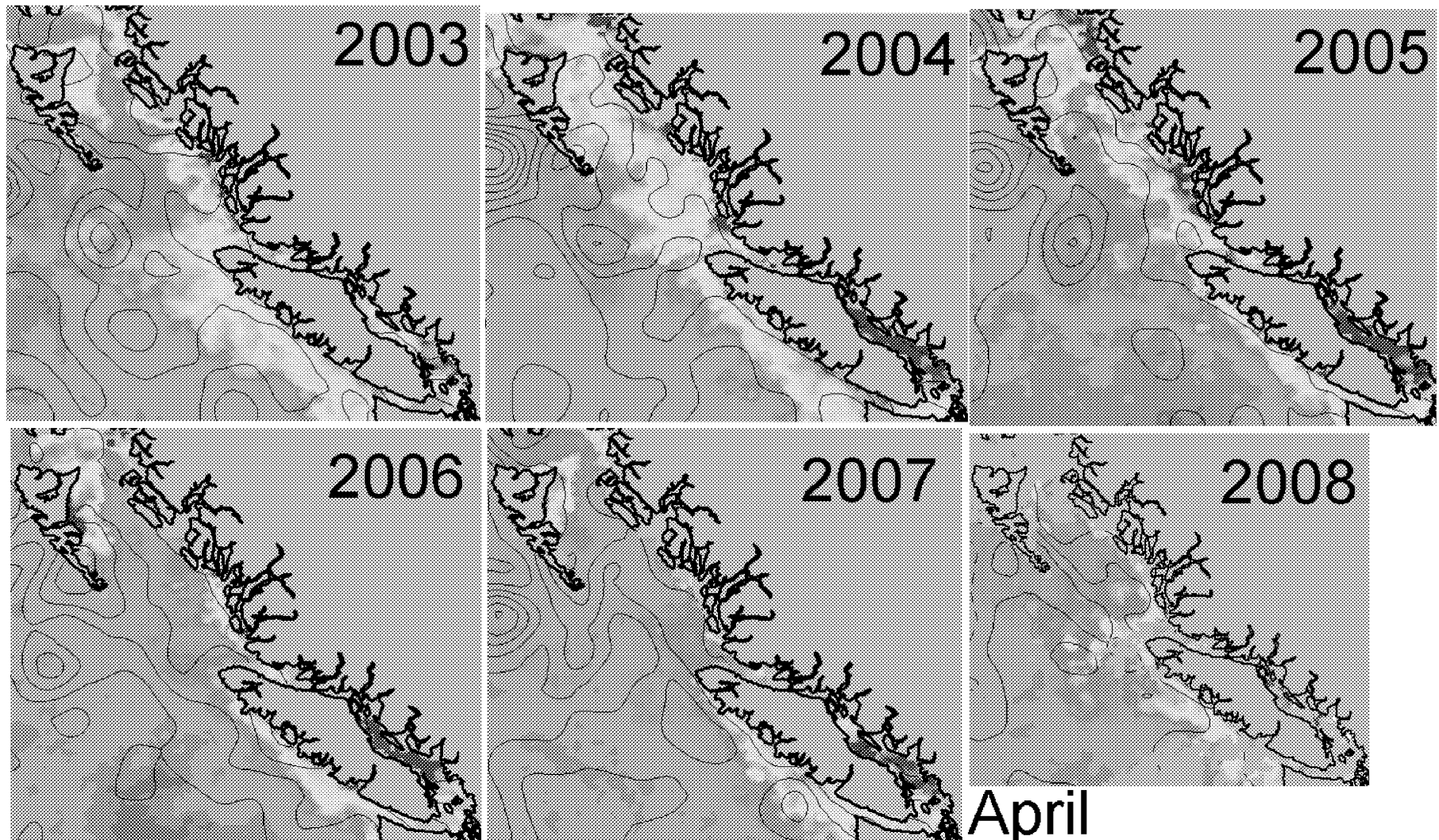
\\svbcvanfp01\Cohen-Comm\Personal_Drives-Science\S
ue Grant\0 Grant January 3\2. Stock Assessment\c (S
SG) Presentations\Sockeye Forecasting\2010 forecas
t\Science meeting talks\Crawford 20090930 PBS.ppt



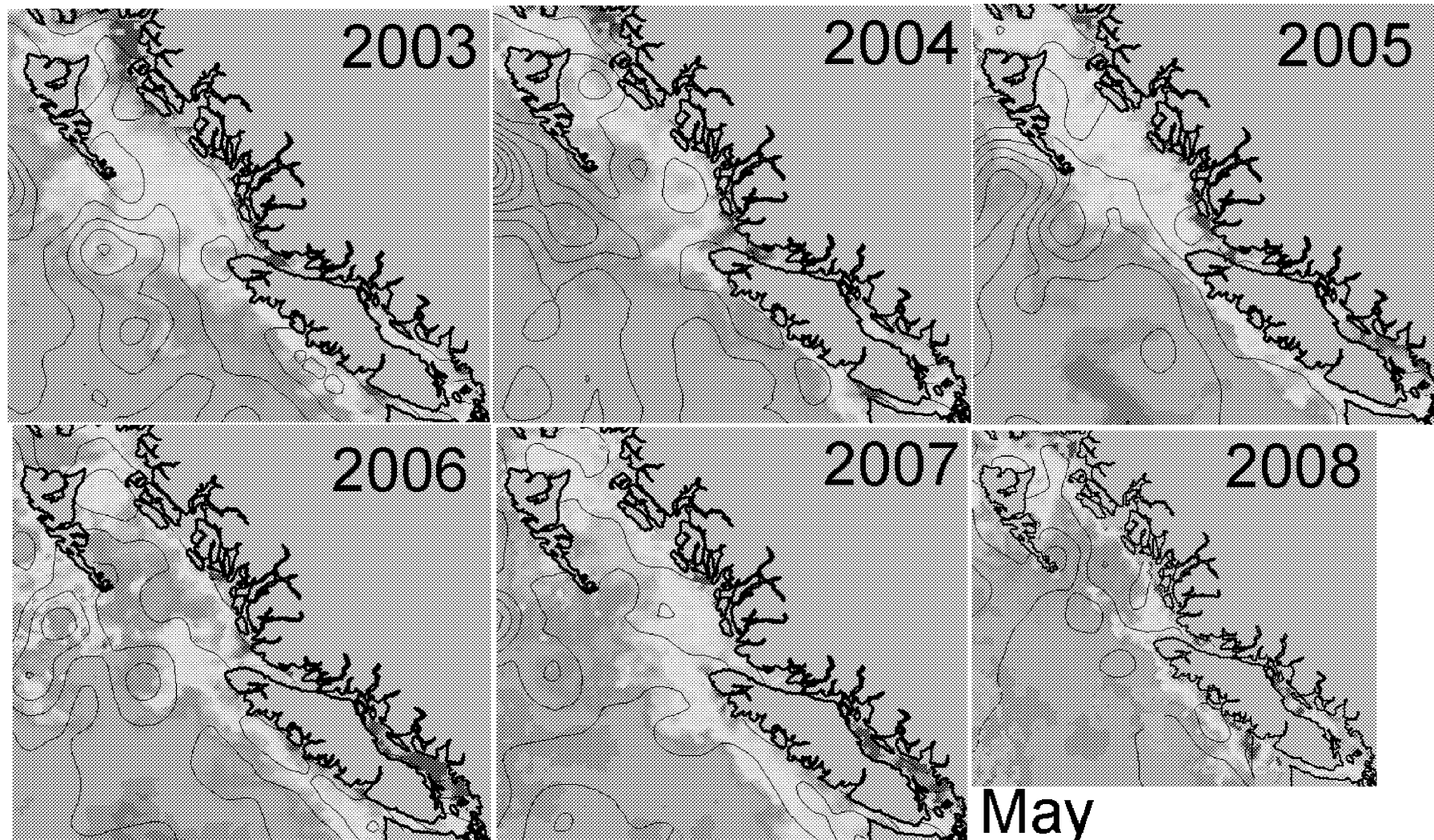
Chlorophyll from SeaWiFS + MODIS
(MODIS only in 2008)



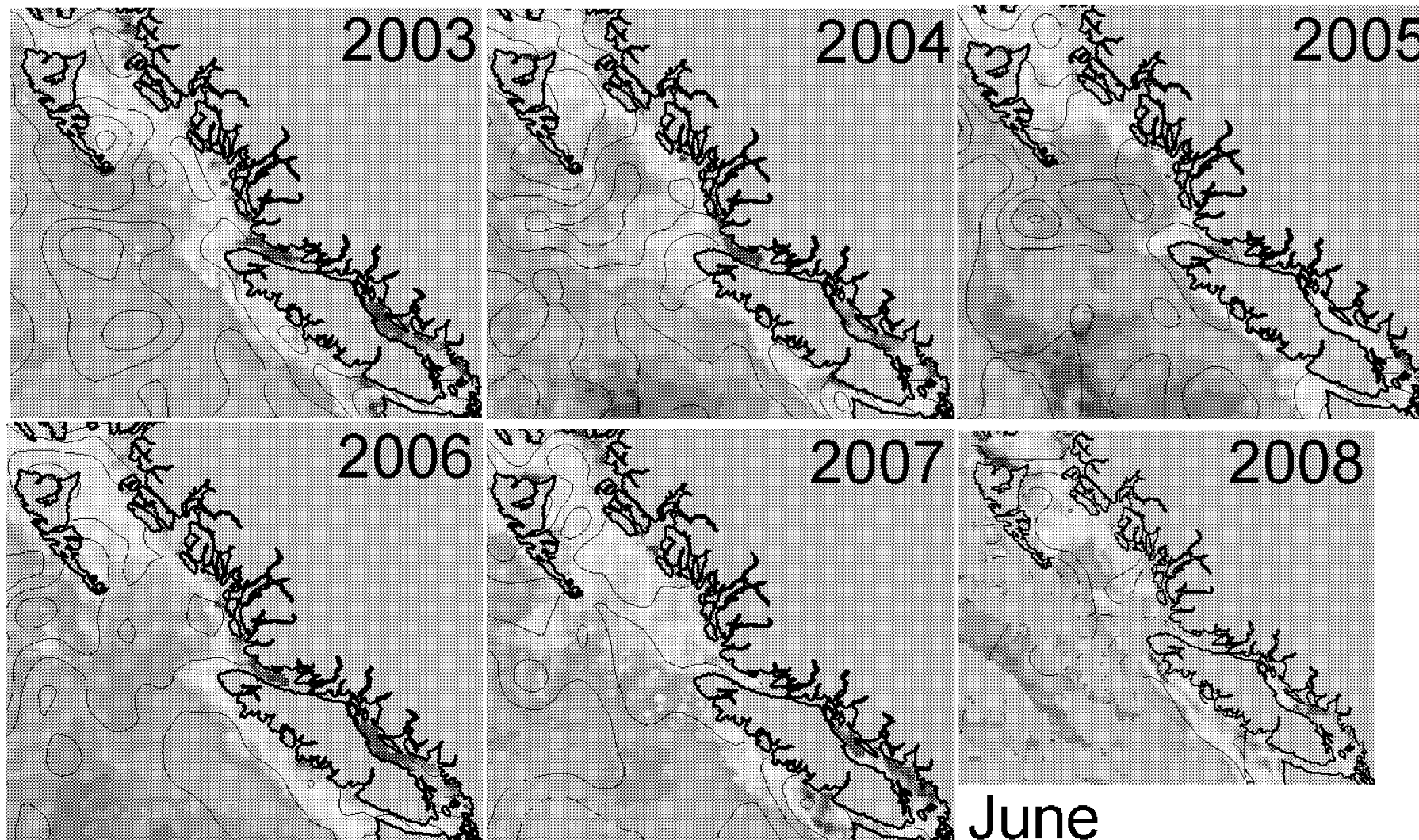
Chlorophyll from SeaWiFS + MODIS
(MODIS only in 2008)



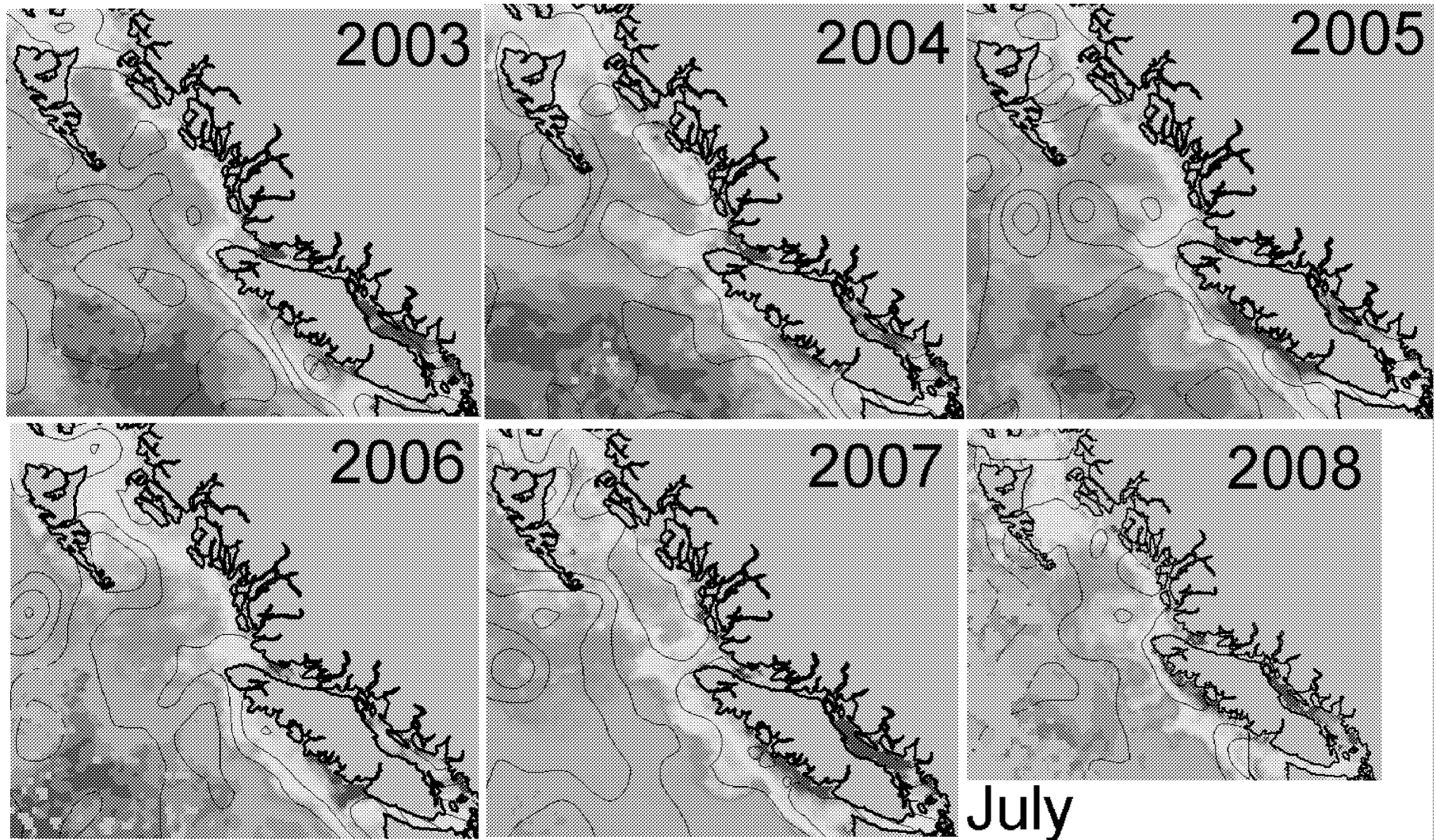
Chlorophyll from SeaWiFS + MODIS
(MODIS only in 2008)



Chlorophyll from SeaWiFS + MODIS
(MODIS only in 2008)



Chlorophyll from SeaWiFS + MODIS
(MODIS only in 2008)



Chlorophyll from SeaWiFS + MODIS
(MODIS only in 2008)