

**Cohen Commission
August 25th, 2010
Greg Gibson (BSc, R.B.Tech),
Environmental Assessment Biologist**

Benthic Management



marine harvest
excellence in seafood

Benthic Management



marineharvest
excellence in seafood

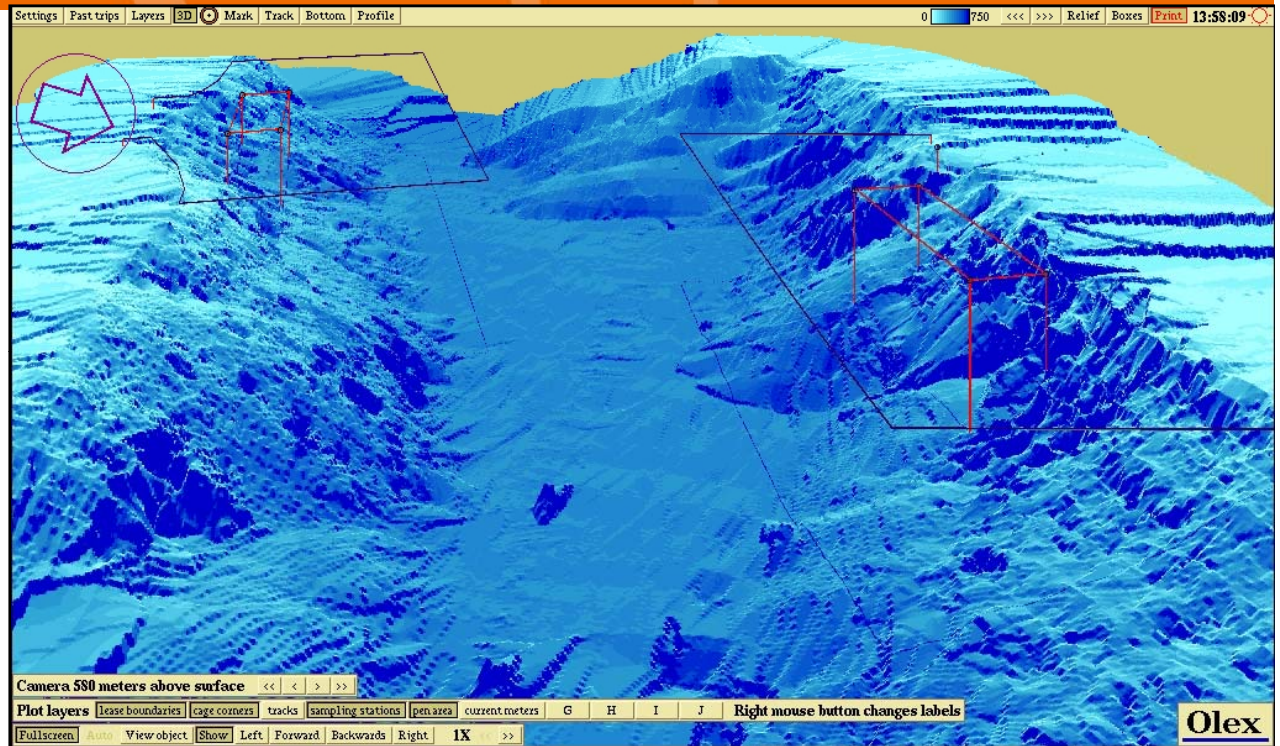
- MOE and DFO regulate benthic requirements
- MHC operates 35 sites. Half the industry in BC
- All operating farms are monitored for organic waste impacts by highly trained professionals
- Data is reported to/audited by regulators



An Evolving Industry



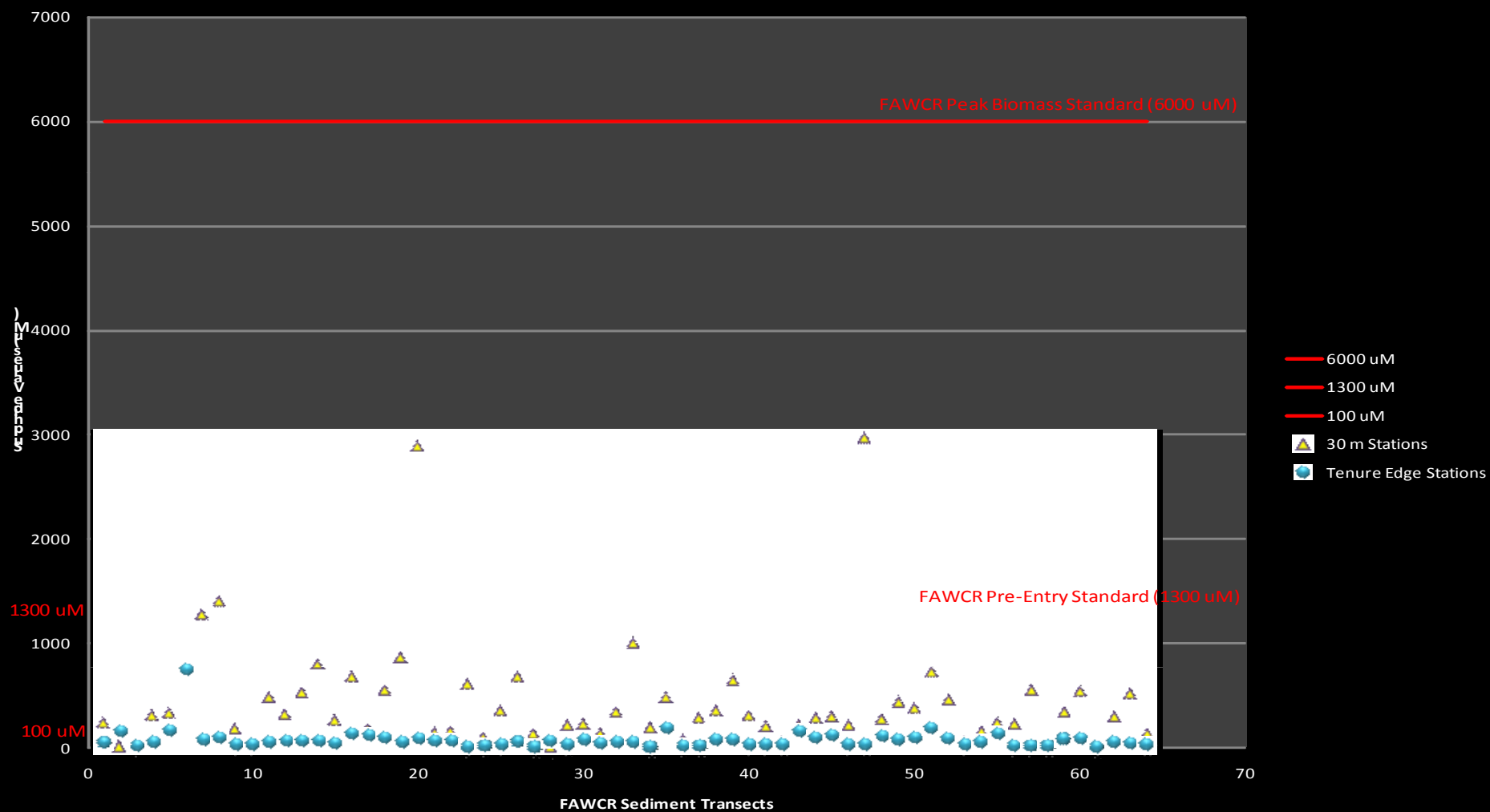
- Feed cameras
- Feed diet
- Trained staff
- DEPOMOD
- ROV, ADCP, OLEX
- Site location
 - High energy sites
 - Advanced engineering and Equipment
- Regular Monitoring
- Habitat Compensation



Benthic Monitoring Results



FAWCR Peak Biomass Sampling 2008-2010



www.MarineHarvestCanada.com

