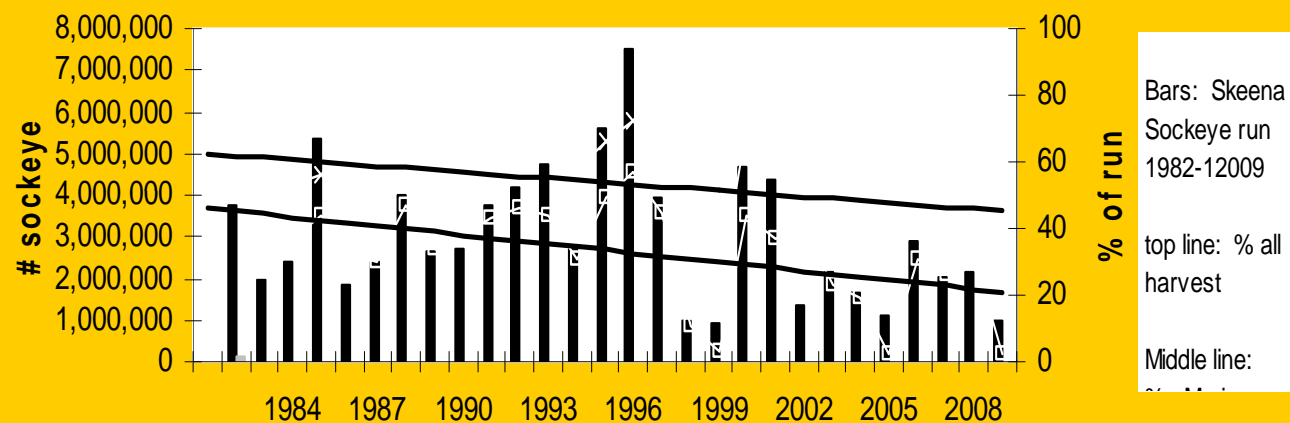
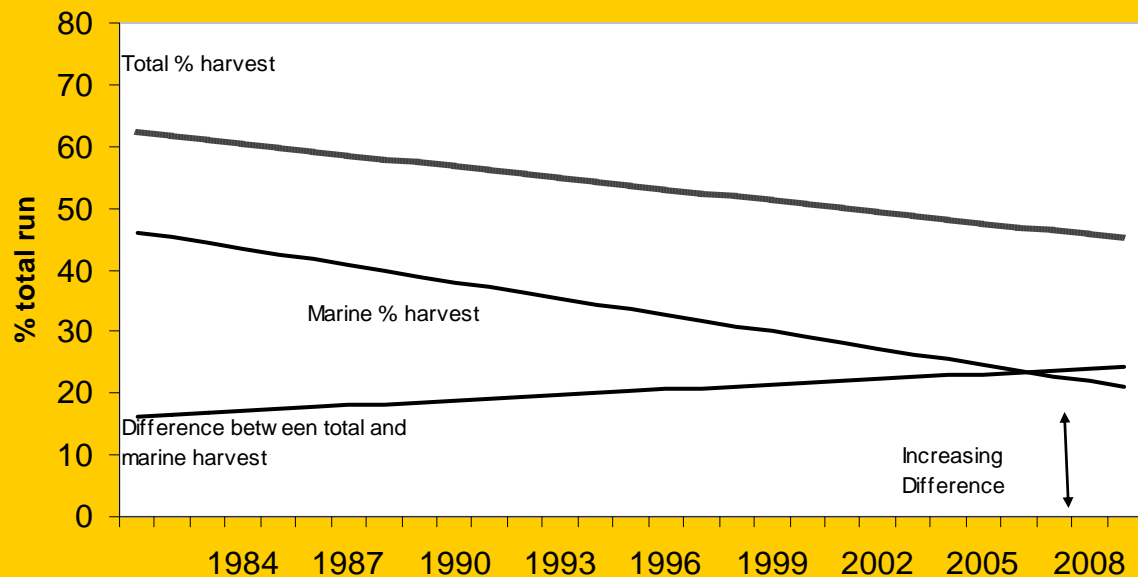


Run Size with Marine ER compared to Total Exploitation Rate



Trends in Exploitation Rates



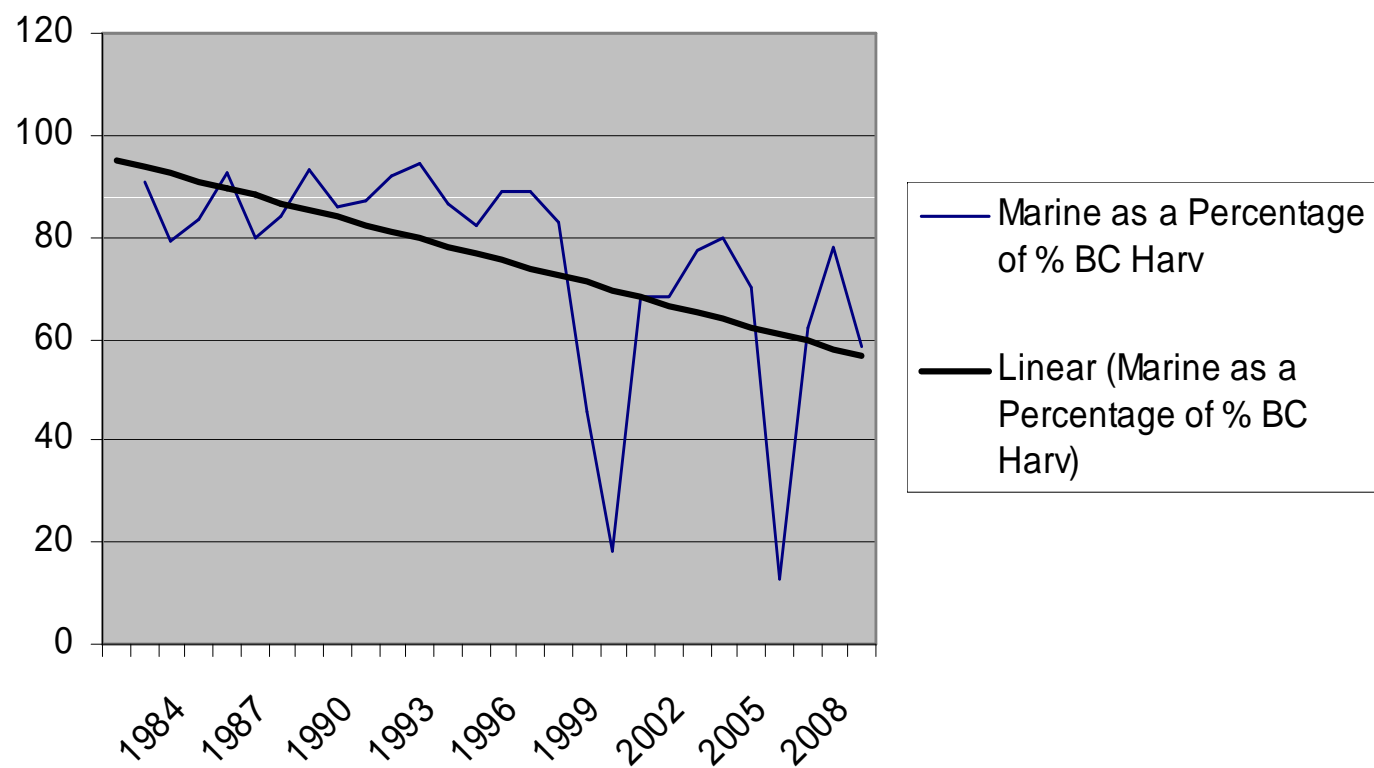
Top line: Total % harvest

Middle line: Total % Marine harvest

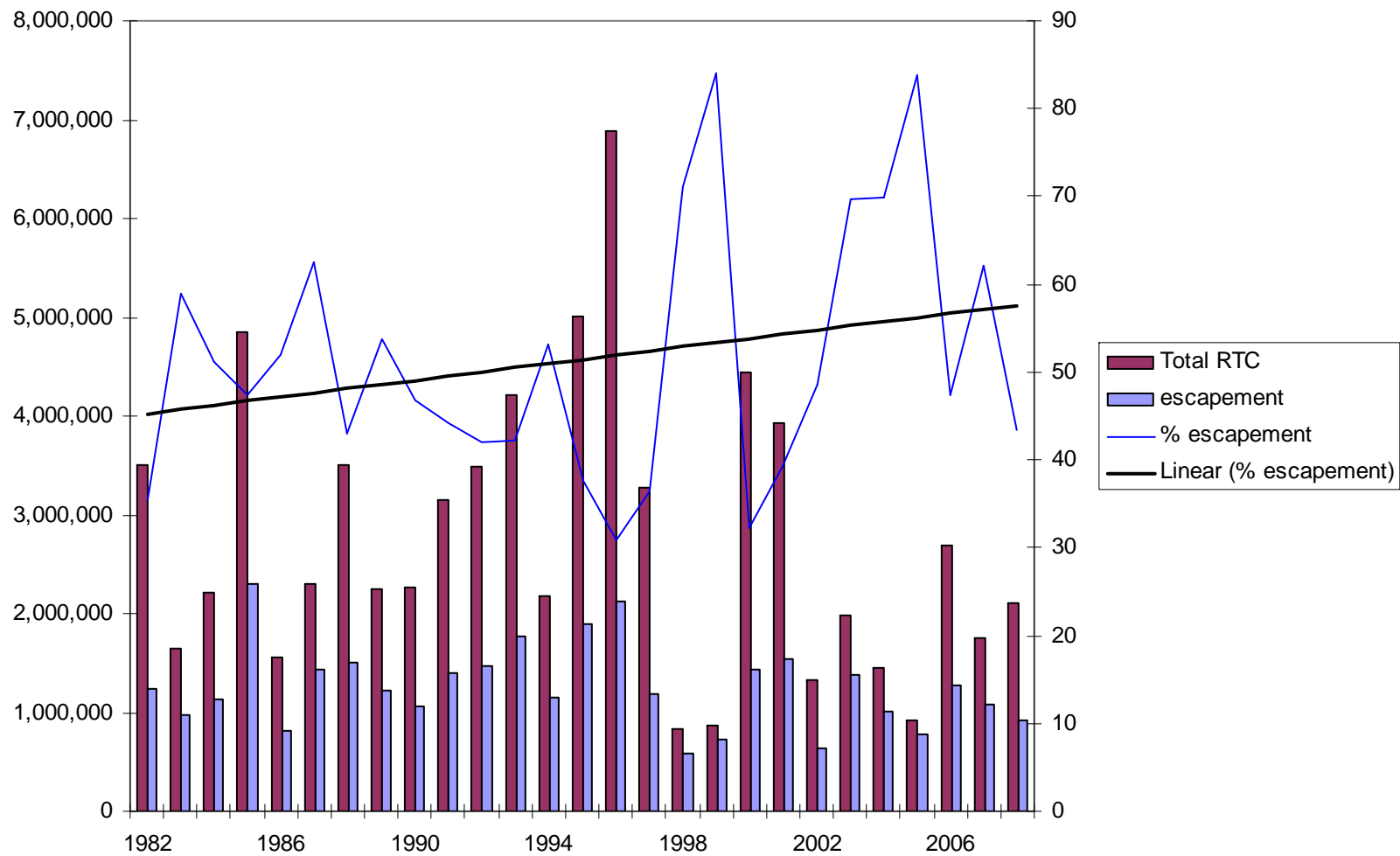
Bottom line: Difference between Total % Harvest and % Total Marine Harvest

Trend lines show that the gap between the marine and total harvests is growing

Skeena: Marine Harvest as a % of all BC Harvest



Escapement and Total Return to Canada



Esc and TRC outliers removed (>4 mill, <1 mill RTC)

